



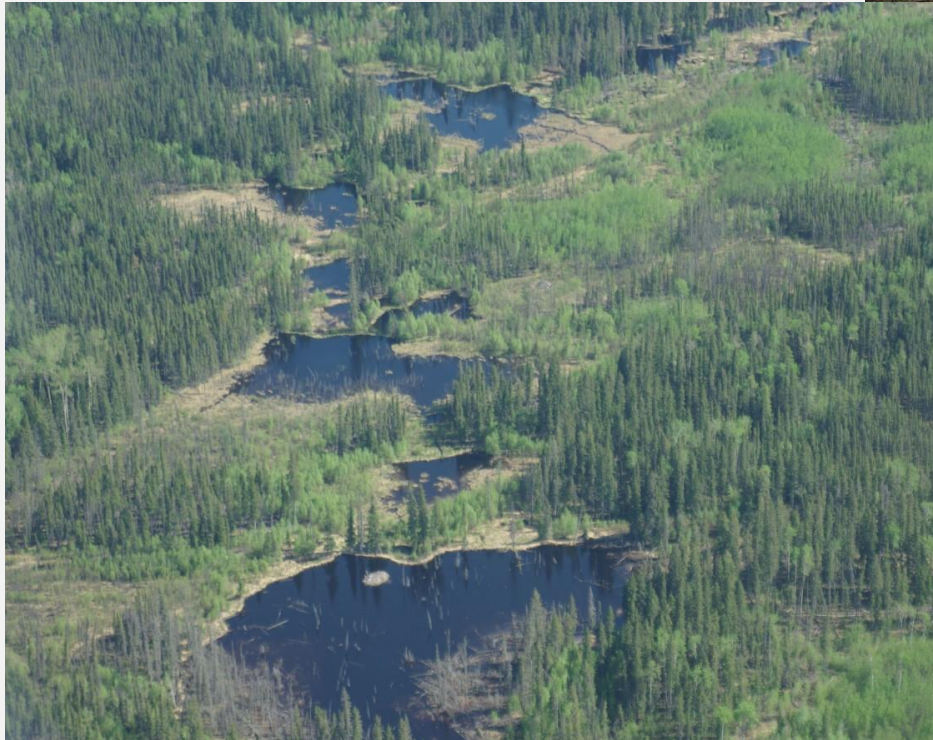
# Utilization of Biogenic Hydrocarbon Assessments to Determine Extent of Petroleum Hydrocarbon Contamination

OCT 2024



BUREAU  
VERITAS









BUREAU  
VERITAS





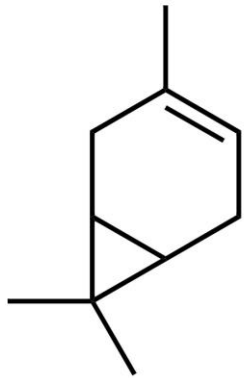
BUREAU  
VERITAS

■ Primary Contamination

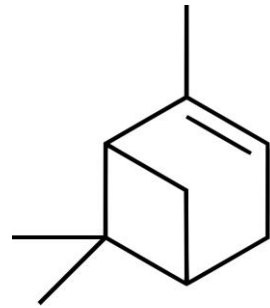
■ Background

**106 m<sup>3</sup>**

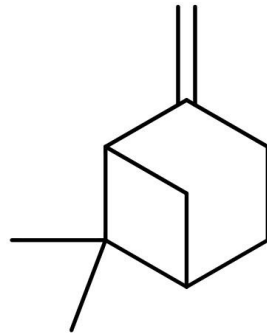
# MONOTERPENES



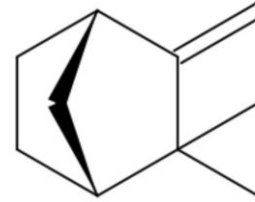
3-Carene  
 $C_{10}H_{16}$



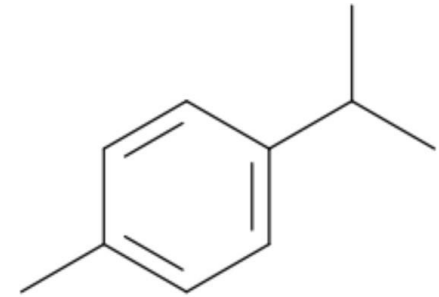
$\alpha$ -Pinene  
 $C_{10}H_{16}$



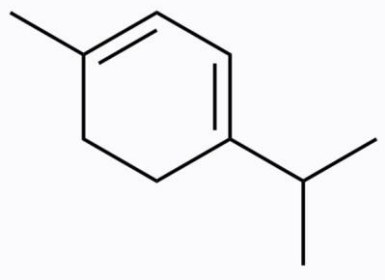
$\beta$ -Pinene  
 $C_{10}H_{16}$



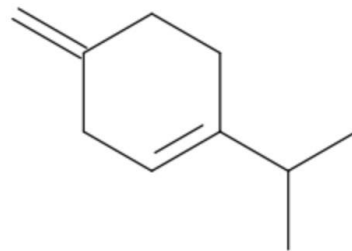
Camphene  
 $C_{10}H_{16}$



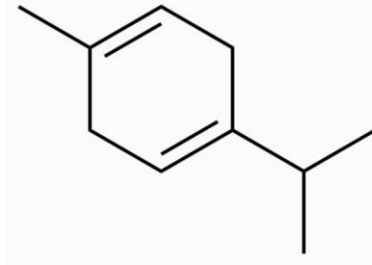
*p*-Cymene  
 $C_{10}H_{14}$



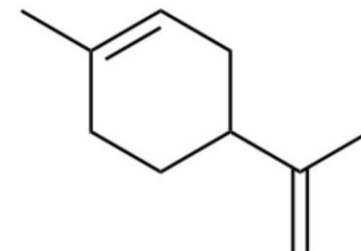
$\alpha$ -Terpinene  
 $C_{10}H_{16}$



$\beta$ -Terpinene  
 $C_{10}H_{16}$

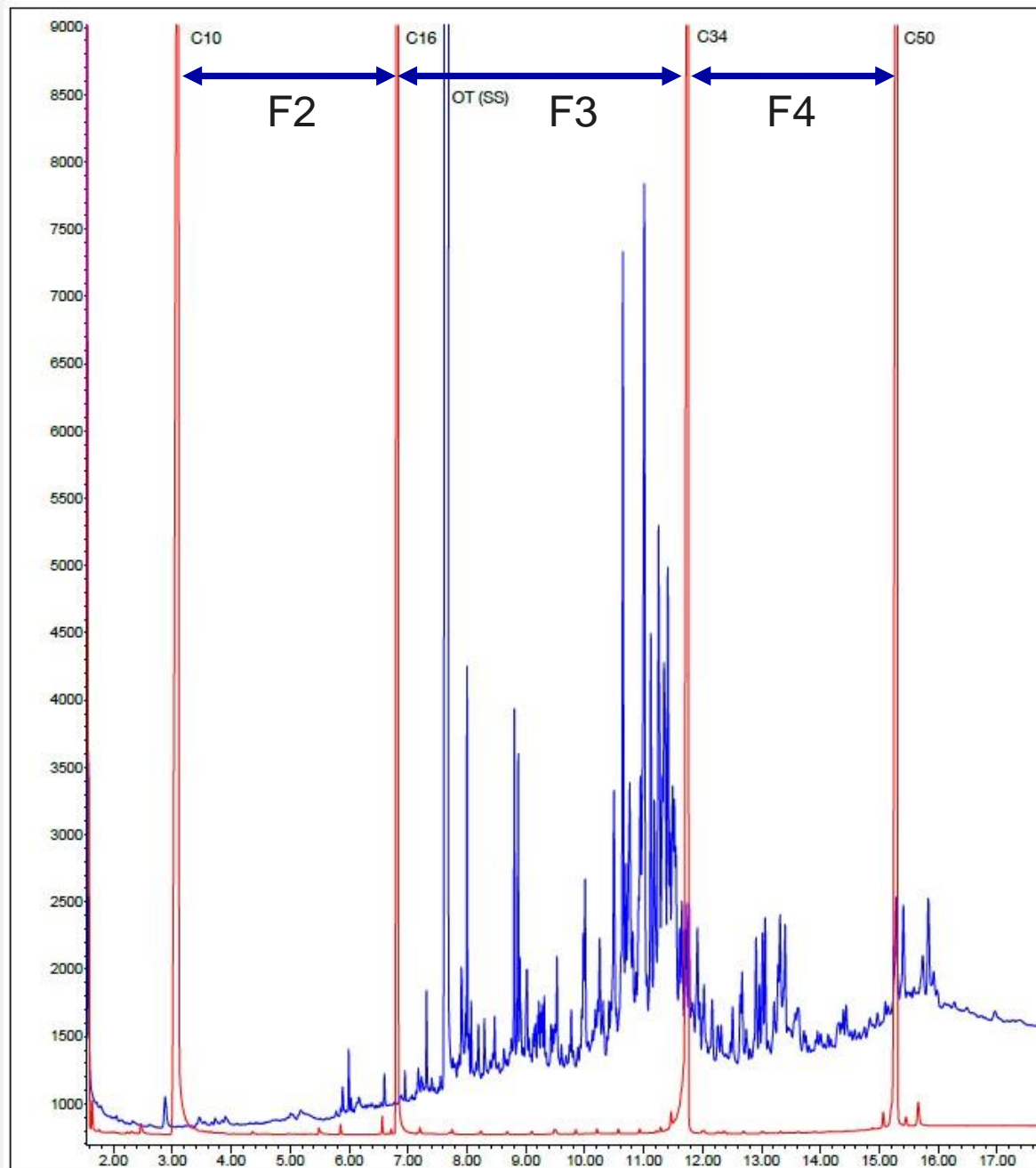


$\gamma$ -Terpinene  
 $C_{10}H_{16}$

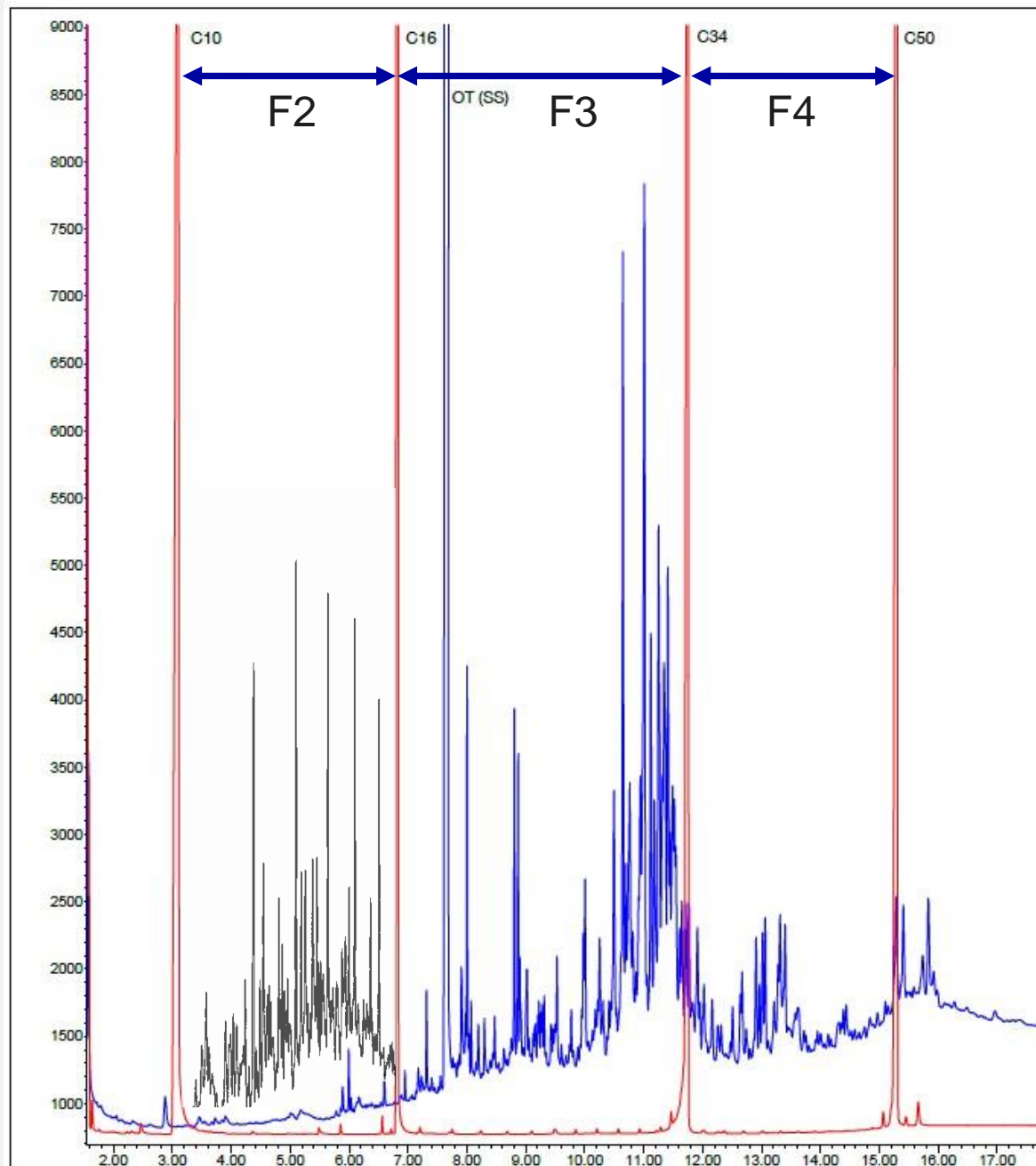


Limonene  
 $C_{10}H_{16}$

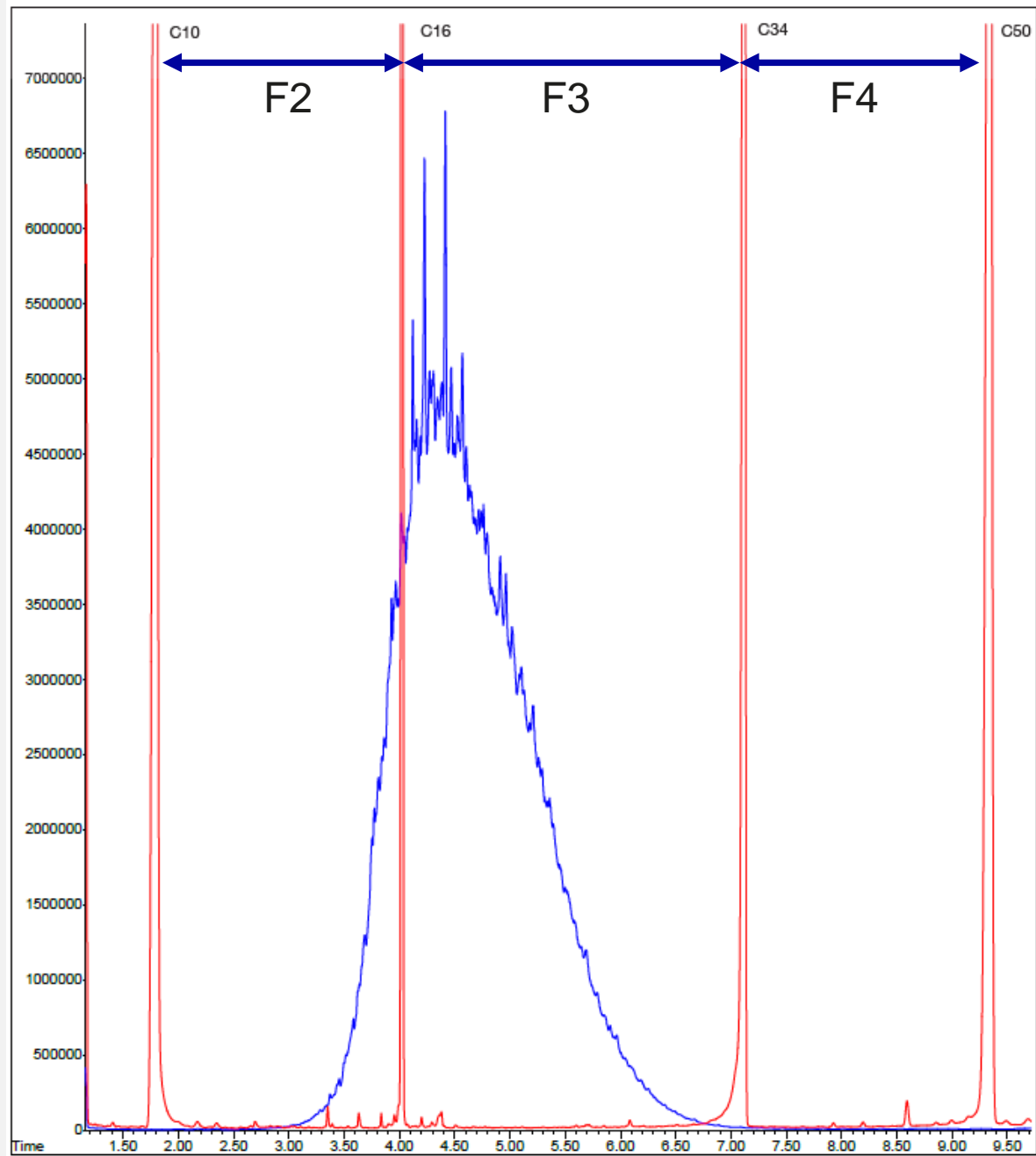




**BUREAU  
VERITAS**

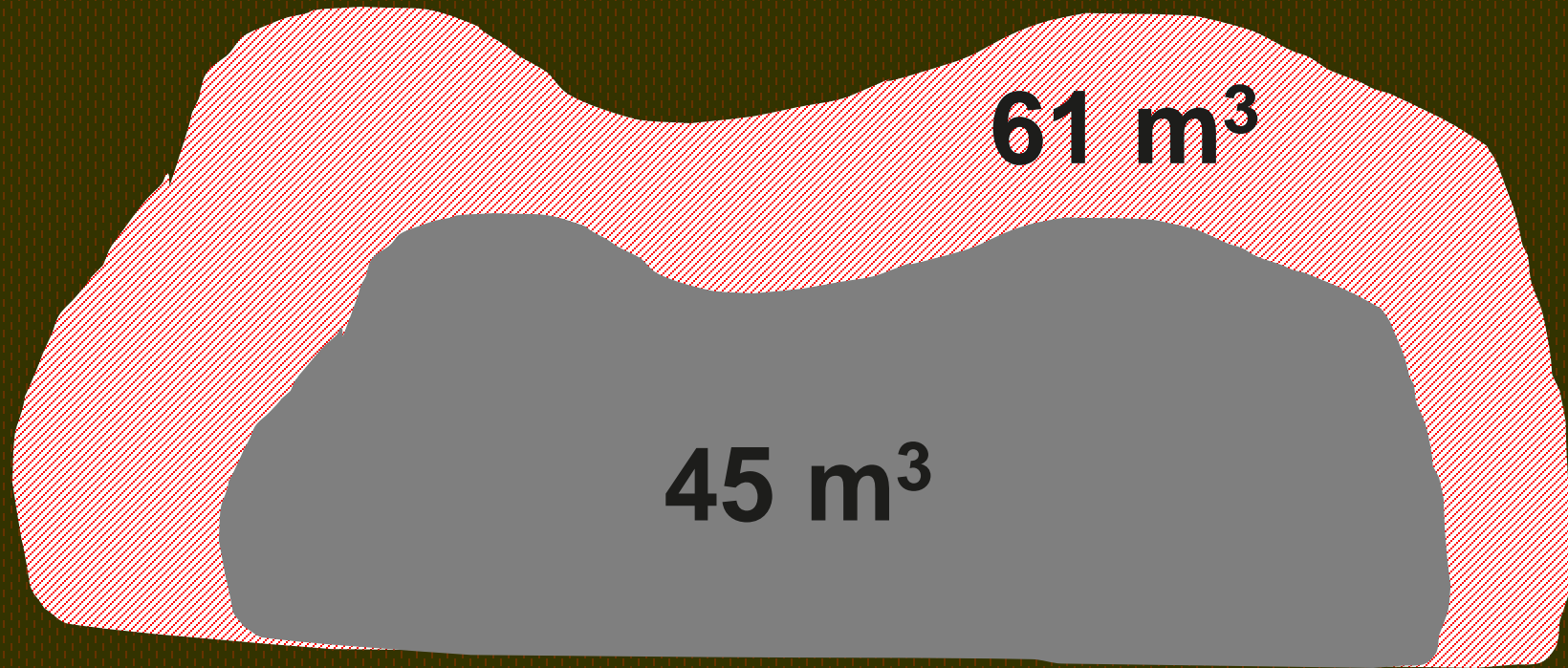


BUREAU  
VERITAS





- Primary Contamination
- Boundary Region
- Background





**BUREAU  
VERITAS**

**Shaping a World of Trust**

[WWW.BUREAUVERITAS.COM](http://WWW.BUREAUVERITAS.COM)

