



DeBeers Victor Mine

A Remote and Challenging Location



Site Location and Background

- Decommissioning plan of the former open pit diamond mine – First and only open pit diamond mine in Ontario
- Opened in 2008 and ceased operations in June 2019
- Remote fly-in/fly-out project



Scope

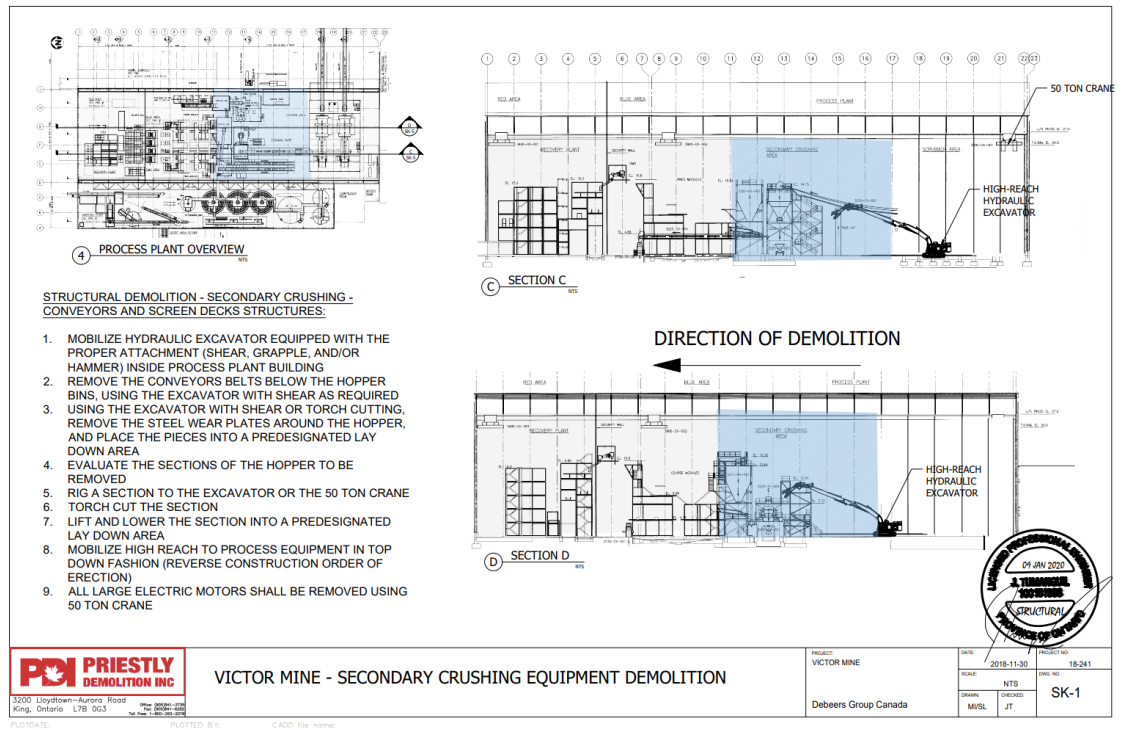


- 55 buildings for demolition
- Short time frame
- No access roads
- Fly in fly out crew and equipment
- Severe winter conditions



Planning and Preparation

- Resource scheduling, equipment, materials and contingency plans
- Demolition of the processing plant
 - 4,500 sq m, 28 meters tall building
 - selective torching
 - detailed engineering plan to perform structural demolition
- 2-week rotation shift, 12 hour days, 7 days/week



Indigenous Partnerships

- Committed to hiring and training Indigenous members
- Skills training and development that stretched beyond project conclusion

Nakogee:

JV agreement to work on First Nations land

Attawapiskat Labour Group:

Laborers and Operators

First Nations Industrial Systems:

supplied us with skilled workers





- Equipment mobilization and demobilization program
- Machines had to be disassembled and adapted to fit into the C-130
- 34 loads
- Each ~ 40,000 pounds
- Multiple team collaboration

Safety

- Crew received remote location safety training
- Full medical exam prior to arrival
- Project occurred in the COVID-19 pandemic
 - Prevention measures immediately implemented
 - Weekly testing, daily symptom checks
 - In airport medical screening prior to boarding chartered flight
 - Zero Covid Cases
- Zero recordable incidents in 88,571 hours



Demolition

- Heavy demolition equipment
 - 460 Link-belt Excavators
 - 345 CAT High Reach Excavator
- Coarse PK Storage Building
 - Tallest at 30 metres
 - PDI in-house engineering team demolition plan
- Processing plant demolition
 - 4,500 sq m, 28 meters tall building
 - use of selective torching
 - PDI in-house engineering team demolition plan



Salvage

- Utilized a separate shredder and torching team away from the demolition
- Materials were taken to a scrap lay-down area
- Stored, processed and prepared to be shipped out via ice-road at a later date





- Extreme cold temperatures
- Effect on workers and steel structures while working
- Main heating system was previously disconnected
- Created a budget-friendly solution by reusing a number of small heat cannons that were refitted and reused

De Beers



Questions

Λ'J' J₆Δ9·Δ <Dⁿ9·Δ^p ∇ <N P<ΔbU'



Victor Mine Closure Project



Leading the way.
Innovation | Technology | Experience

Key Take Aways



- Planning: Early client engagement is paramount
- People: Teamwork and innovation of office and on site teams
- Equipment: Operating one of the largest demolition fleets in the country – ready for scope options

