



A case of digital transformation  
with oil and gas operators and  
consultants during the pandemic

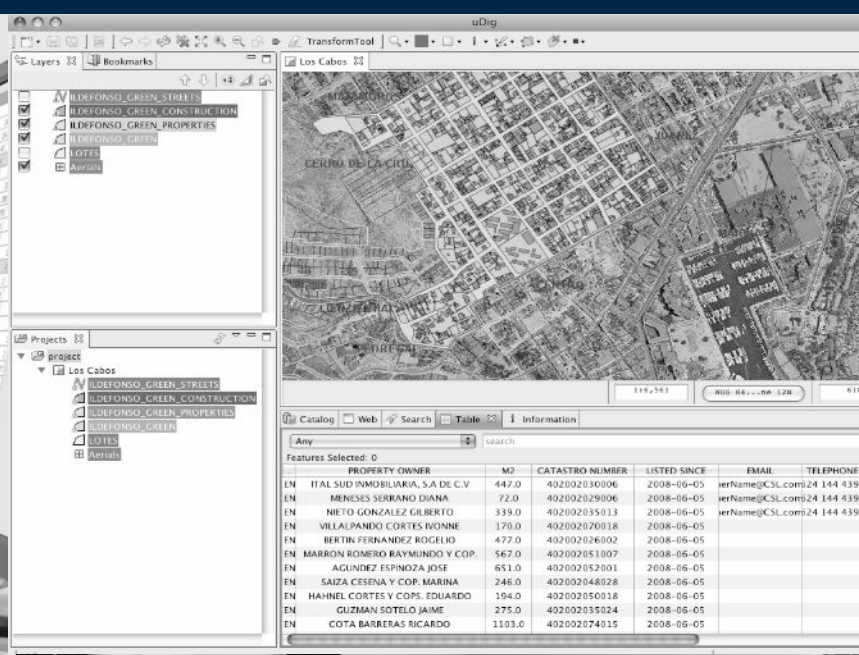
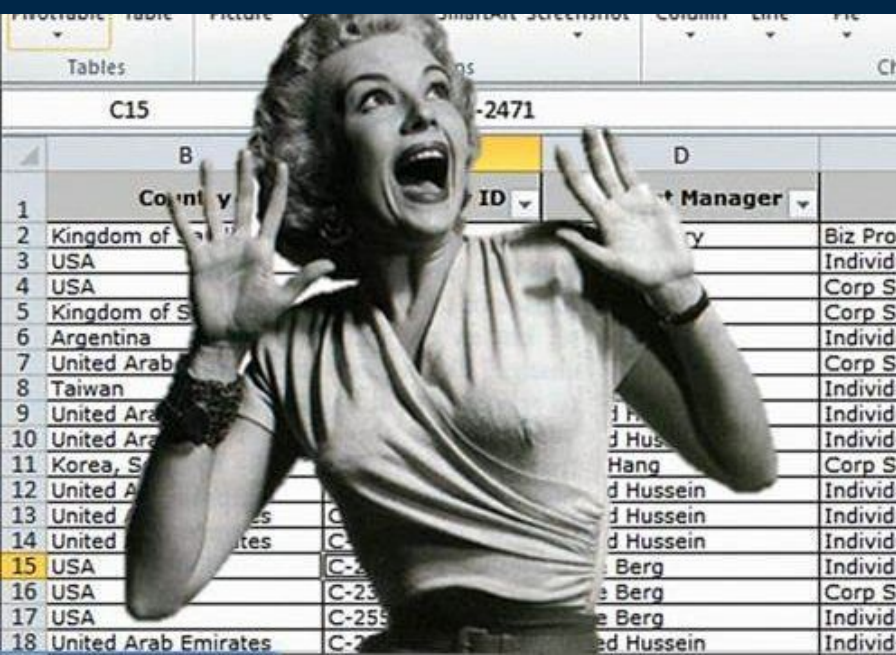


**MATIDOR**

Vincent Lam  
Co-founder & CEO



**There is no easy way to keep track of environmental impact, geospatial data, project costs and other key information for operators, project managers and field teams.**



Spreadsheets, complicated mapping software and even pen-and-paper are still being used.

Information are often kept in silos and are difficult to share.

Billions of \$ are lost due to inefficiency and information loss & errors.

# Did you know?

## Cost of spreadsheets

88% of all spreadsheets contains **at least 1 error**

Erroneous programming

A case of hefty mistake :

*omission of a minus sign  
costs British Gov't **over \$75M***

## Cost of data silos

54% of organizations have as many as **200 applications on their private network**

Employees waste **30 mins to 2 hours every day** looking for information

# Additional Challenges with the Pandemics

- 1 Technical issue logging into file systems and internal network
- 2 Distractions with virtual meetings and workshops
- 3 Feeling disconnected or less productive
- 4 Travelling afar is restricted or limited

# A Case Study with Rife Resources

Manage 5x more projects while maintaining quality by adopting New Technological innovations

**Rife Resources Ltd.** is a private exploration and production company owned by the CN Pension Trust Funds, the pension fund for the Canadian National Railway Company's employees.

**RRife**  
Resources Ltd.



“ We had been using spreadsheets to keep track of our sites, and it was a nightmare. Matidor organizes everything in one place for us and makes our cost accrual process so much faster. We never realized it would be so easy to get timely updates from our consultants.”

**Shawna Garcia**  
Environmental Coordinator  
at **Rife Resources Ltd.**

# Rife's Challenges

- 1 Entire EHS portfolio managed in spreadsheets
- 2 Delayed updates from consultants costing hundreds of thousands
- 3 Missing or hidden information from various data sources
- 4 Lack of standard data workflow, making tracking and reporting extremely tedious.

# Rife's Wishlist:

- 1 Must be easy to use for non-technical users
- 2 Must be shareable with internal and external parties
- 3 Must be able to track different types of projects
- 4 Must be turnkey, without complicated setup and configuration



# The Solution: A Map-Based & Data Collaboration Platform

Improve Collaboration & Efficiency Across Project Teams

uDig

Los Cabos

Layers: IDEFONSO\_GREEN\_STREETS, IDEFONSO\_GREEN\_CONSTRUCTION, IDEFONSO\_GREEN\_PROPERTIES, IDEFONSO\_GREEN, LOTS, Areas

PROPERTY OWNER	M2	CATASTRO NUMBER	LISTED SINCE	EMAIL	TELEPHONE
EN ITAL SUD INMOBILIARIA, S.A DE C.V	442.0	402002030006	2008-06-05	erName@CSL.com	24 144 439
EN MENESSES SERRANO DIANA	72.0	402002029006	2008-06-05	erName@CSL.com	24 144 439
EN NIETO GONZALEZ GILBERTO	339.0	402002035013	2008-06-05		
EN VILLALPANDO CORTES ROSINE	179.0	402002070018	2008-06-05		
EN BERTIN FERNANDEZ ROGELIO	477.0	402002026002	2008-06-05		
EN MARRON ROMERO RAYMUNDO Y COP.	567.0	402002051007	2008-06-05		
EN AGUIÑEZ ESPINOZA JOSE	651.0	402002052001	2008-06-05		
EN SAIZA CESENA Y COP. MARINA	246.0	402002048028	2008-06-05		
EN HAHNEL CORTES Y COP. EDUARDO	194.0	402002050018	2008-06-05		
EN GUZMAN SOTELO JAIME	275.0	402002035024	2008-06-05		
EN COTA BARRERAS RICARDO	1193.0	402002074015	2008-06-05		

600 Projects

Active Budget: \$ 14,587,387

Completed Tasks: 245

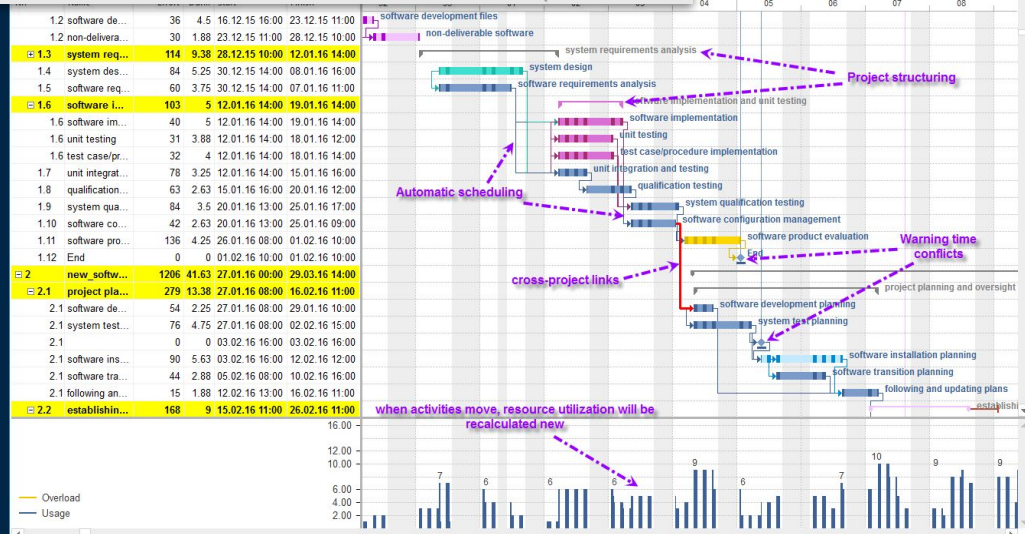
Overall Status: 243

100% Projects updated

100% Completed

100% Budget

100% Tasks



Project Team

Longdale Roadworks Ltd #25012-35  
Vancouver, Canada

Search people by name or email

- Guy Hawkins  
Administrator  
Mtdior Customer team
- Esther Howard  
Invited - Not yet responded
- Wade Warren  
Logged in 1 day ago
- Jenny Wilson  
Invited - Not yet responded
- Kristin Watson  
Logged in 1 day ago
- Dianne Russell  
Ridgeline | Logged in 1 day ago
- Devon Lane  
Ridgeline | Logged in 1 day ago
- Darrell Steward  
Secure Energy Onsite Services

Roles: Administrator, Project Manager, Priviledged User, Limited User, Remove User

# Demo

**MATIDOR** MAP TABLE Search matidor CREATE PROJECT INVITE PEOPLE MK

### Alaska Field Clearance

Vancouver, Canada 23

**Project Manager**  
Jane Morrison

**System Owner**  
ACME Consulting

**Partner Company**  
A-Plus Partner Co

**Company**  
ACME Consulting

**Project Phase**  
Remediation

**Project Status**  
In-Progress

Landowner Information (12)

Well Abandonment (10)

Pipelines (10)

[View all project details](#)

#### Latest Activity

- TASK UPDATED** 6 hours ago  
Gillian added a task Upload yesterday's report
- FORM CREATED** 12 hours ago  
Mathew created a Material Transfer
- COST ADDED** 1 day ago  
Jane added cost to Covid 19
- FORM CREATED** 1 week ago  
Ruth Zinford added a task Review July Costs for wells
- COST ADDED** 1 week ago  
Gillian Stacey added cost \$1500
- COST ADDED** 2 weeks ago  
Alex Colman added cost to Covid 19

[View all activities](#)

Hey John doe,  
Here's a quick weekly summary of what's hap at Matidor this week.  
June 1st - June 7th

Projects Updated	Activities	Cost Spent
16	68	\$44726.0

**Alaska Field Clearance**  
Project Status - In Progress

**+\$50 Cost Spent** \$1,000.00 of \$1,300.00

**160 Project Activities**  
See Version History and New entries

- 76 Tasks Updates
- 4 Project files uploaded
- 12 New drawings to site
- 63 Project Changes
- 5 Forms Created

[View all 230 activities](#)

Terrain

# Results

- 1 Able to manage 590 projects, an efficiency gain of 492%
- 2 Saved 150+ hrs per month from data retrieval
- 3 Much faster decisions and responses
- 4 It took only 2 weeks cut over from spreadsheet

Bottomline: Spreadsheets are no longer the system of records

# Rife's pleasant surprises

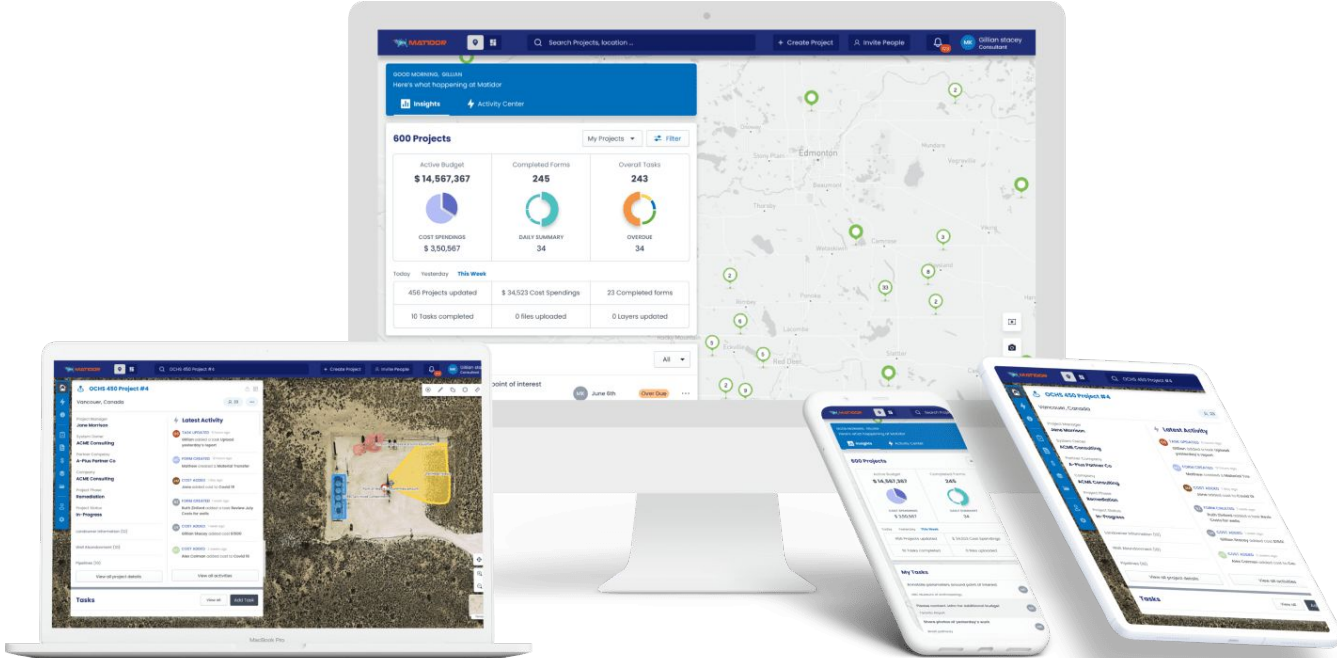
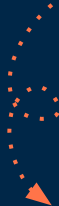
- 1 Visual map tools greatly aids offsite planning and assessment
- 2 Matidor quickly becomes team's daily routine (over 60 mins of average usage per day)
- 3 Zero training needed for new users

# Post-COVID: The New Norm





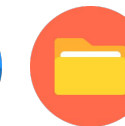

A better way is needed:

- 1 Storing, securing and sharing information
- 2 Reporting on activities
- 3 Offsite assessment and planning
- 4 Collaboration with remote teams

Matidor puts all key project information on one intuitive map-based platform for better visualization, management, and collaboration



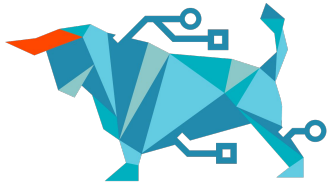
## Main Features

-  Team Sharing
-  Comments
-  Budget & Cost
-  Tasks
-  Files
-  Map

...with lots of integrations



It is the ultimate **one-stop-shop experience** for your team, clients and vendors



# MATIDOR

www.matidor.com

1-833-MATIDOR

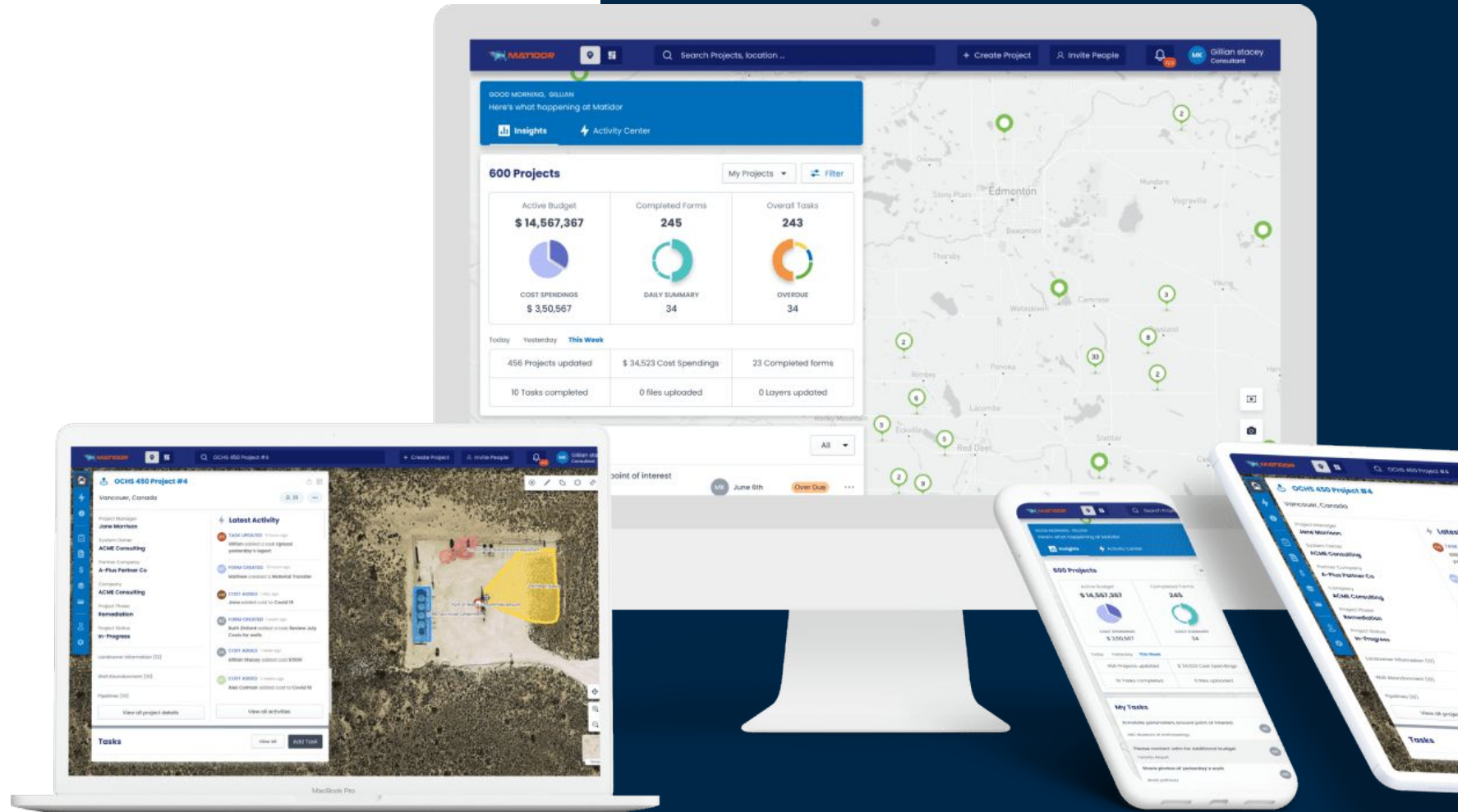
info@matidor.com



@matidor\_com



@matidorapp



# Visualize Clearly

Manage and share Rife's entire portfolio of projects on a live map to unlock vital insights that would otherwise remain hidden in a spreadsheet.

Filter the map to only view specific project types, project phases, etc.

The screenshot displays the Matidor software interface. At the top, there's a navigation bar with 'MATIDOR', 'MAP', and 'TABLE' options, along with a search bar and 'CREATE PROJECT' and 'INVITE PEOPLE' buttons. Below the navigation bar, a blue header shows a greeting and 'Here's what happening at Matidor'. The main content area is divided into several sections:

- 600 Projects:** A summary card showing 'Active Budget \$14,567,367', 'Completed Forms 245', and 'Overall Tasks 243'. Below this, a table shows activity for 'Today', 'Yesterday', and 'This Week'.
- My Tasks:** A list of tasks with due dates and status indicators (e.g., 'Over Due', 'Open', 'In Progress').
- Map:** A live map of Alberta with various project markers. A callout box for 'Brazeau Hydroelectric Dam' is visible.
- Invite People Modal:** A window for inviting users, showing a list of people with their names, roles (Administrator or Limited User), and login times.



Live Interactive Map



Visual filtering



# Manage With Ease

User-friendly tools make it simple to capture and track Rife's project data

- Files, budget, costs, tasks, and project history in one place
- Configurable templates for different project needs and workflow

The screenshot displays the MATIDOR software interface. At the top, there's a navigation bar with 'MAP' and 'TABLE' views, a search bar, and buttons for 'CREATE PROJECT' and 'INVITE PEOPLE'. The main content area is split into three panels:

- Project Expenses Panel:** Shows 'OCHS 450 Project #4' in 'Vancouver, Canada'. It includes filters for 'INSIGHTS', 'All', and '2020'. A 'Total Budget' of '\$ 144,567,367' is displayed with a pie chart. Below is a table of expenses:

Category	Date	Person	Phase	Amount
Onsite fees	June 20th 2020	Angela Guenette	Well abandonment	\$ 51,600
Earthworks	June 18th 2020	Jonathan Ortermayer	Phase 2	\$ 15,600
Office/Logistics	June 17th 2020	Maha Krishnan	Phase 3	\$ 5,600
Remediation	June 15th 2020	Lucas Henrique	Phase 2	\$ 4,786
Accommodation	May 20th 2020	Lucas Henrique	Well abandonment	\$ 1,234
Well Cleanup expenses	April 3rd 2020	John Doe	Phase 2	\$ 8,976
- Map Panel:** An aerial view of a site with various colored overlays (purple, red, orange) and labels like 'Tanks', 'Equipment area', 'Base center', and 'Selected area'.
- Add Cost Panel:** A form to add a new cost entry. It shows 'Earthworks' as the category with an 'ACTIVE' status for 'Fiscal year 2020' and a total of '\$ 4,567,890'. Fields include 'Date field' (2020-08-09), '24 hour summary line locates', 'Next 24 hour Summary', 'Company Name' (Proline), 'Ticket Number' (37336), and 'Invoice Number' (39531). A 'SAVE & ADD NEW' button is at the bottom.

# Collaboration Driven

**Team members, vendors, partners or clients can access Rife's projects in a matter of seconds. Easily share information and documentation, request approvals, and much more.**

**Control what each invitee can see and access using permission settings, to ensure that your information stays secure at all times.**

