

Strategies for Large-Scale Urban Environmental Assessments in Support of Transit-Oriented Development

Kimberley McLeish

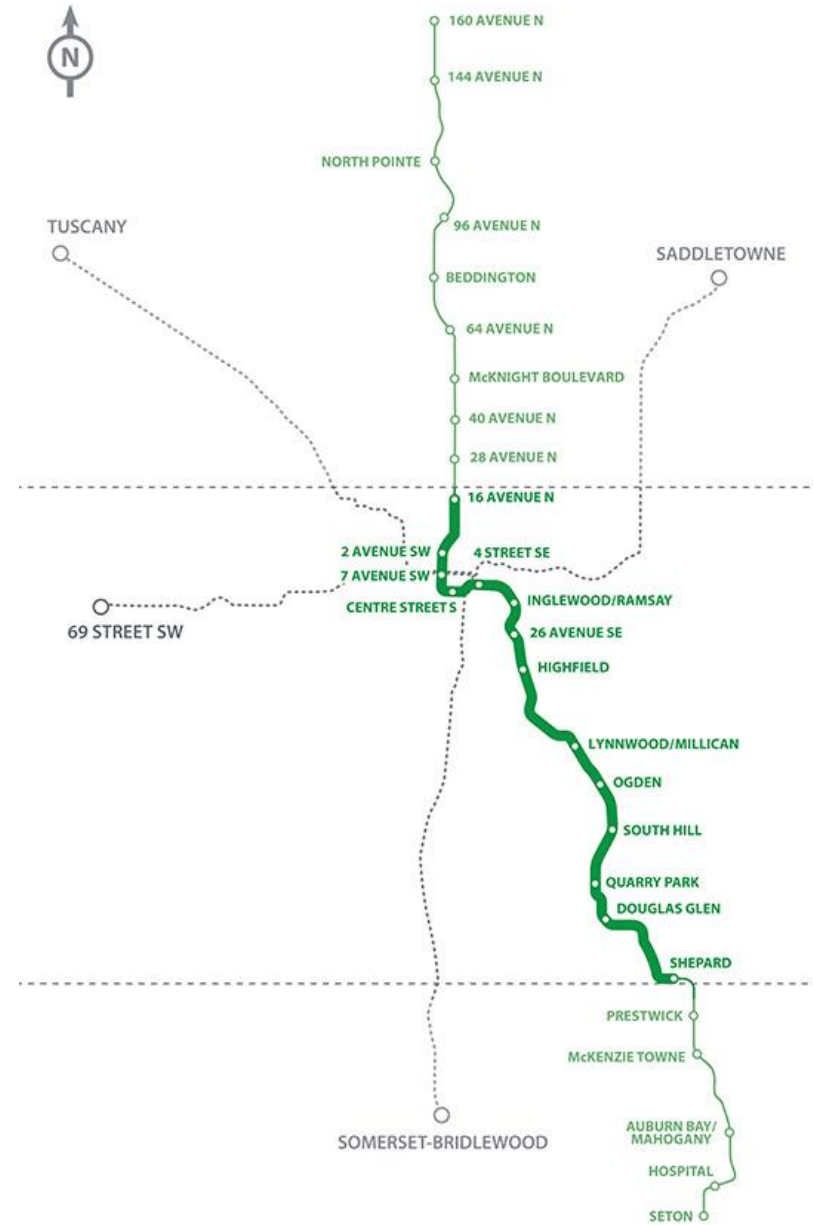
October 18, 2019

Advisian

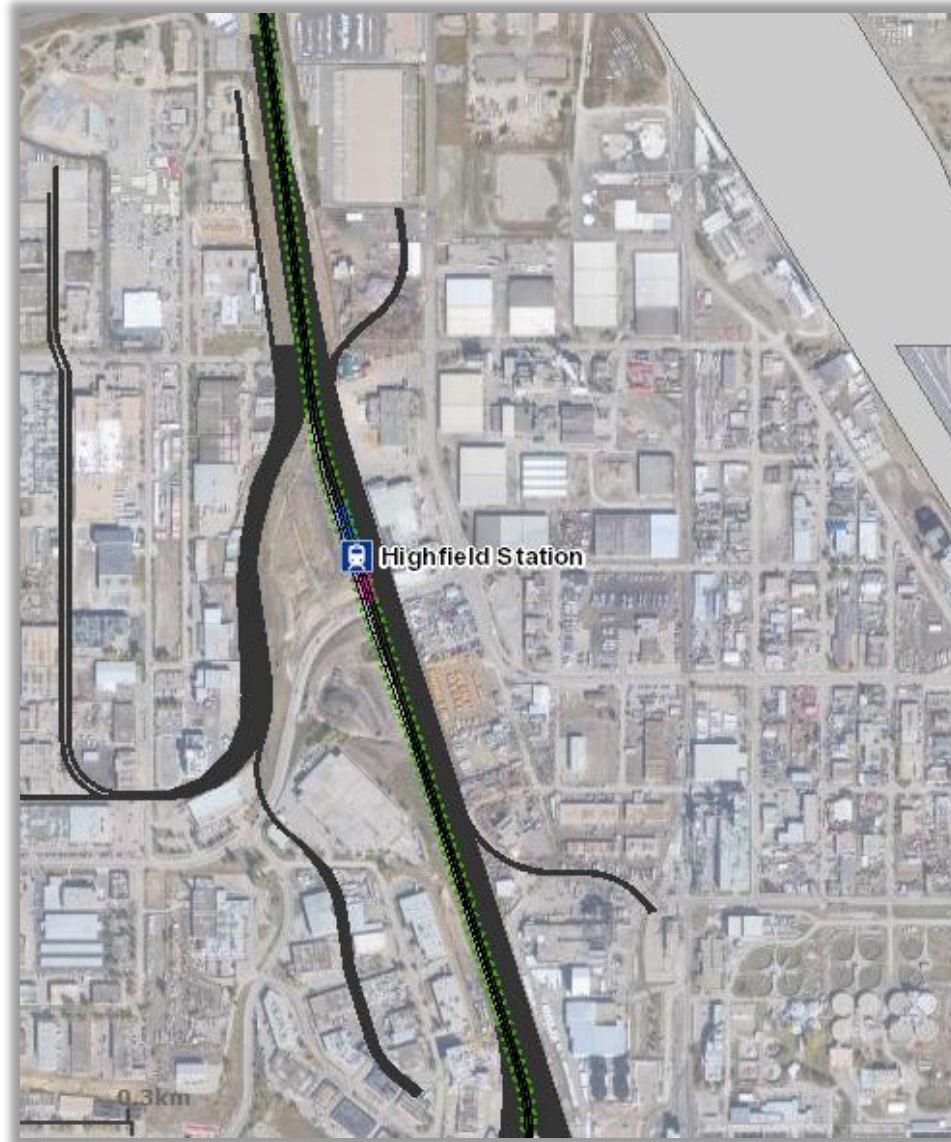
advisian.com



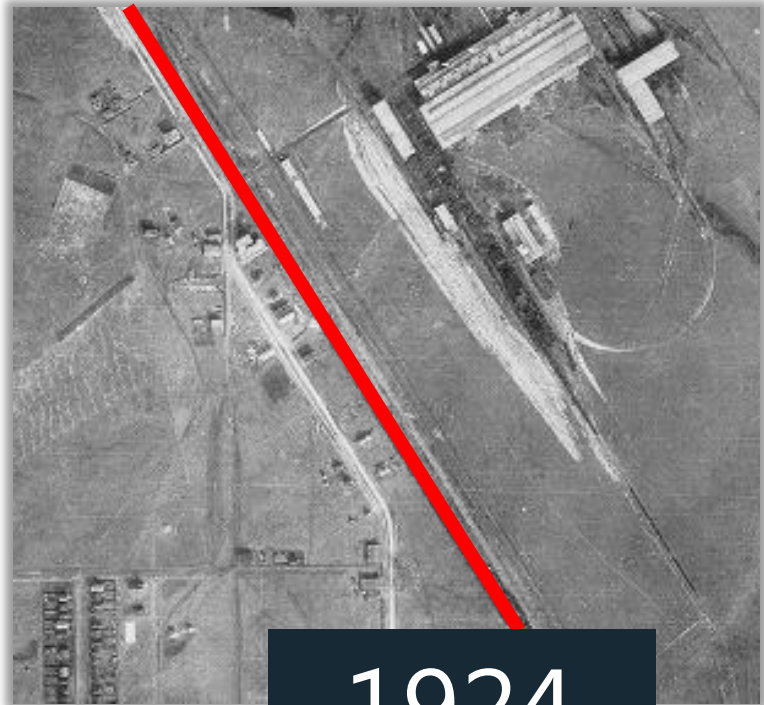
Transit Projects



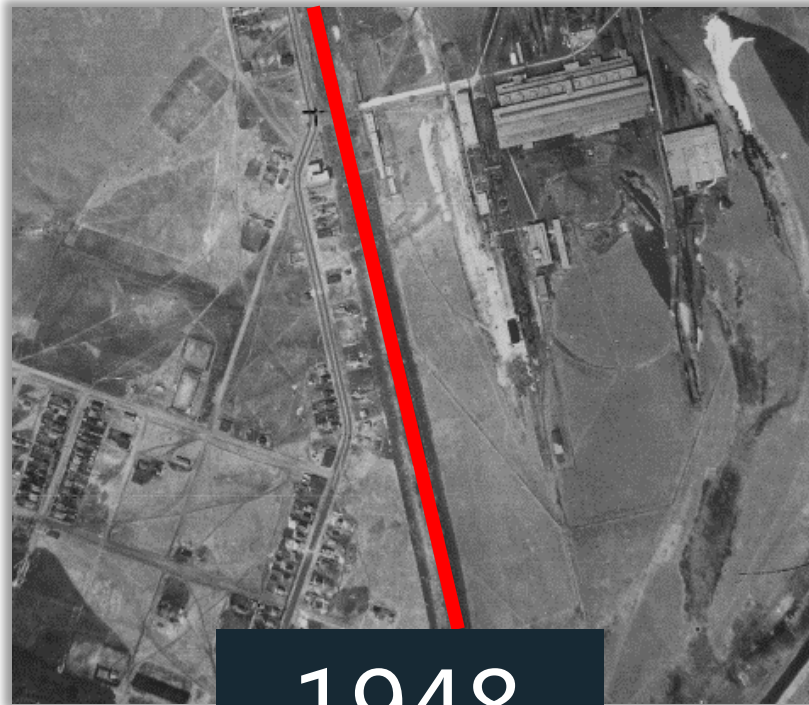
Utilization of Historical Transportation Corridors



Historical Transit-Oriented Development



1924



1948



1959

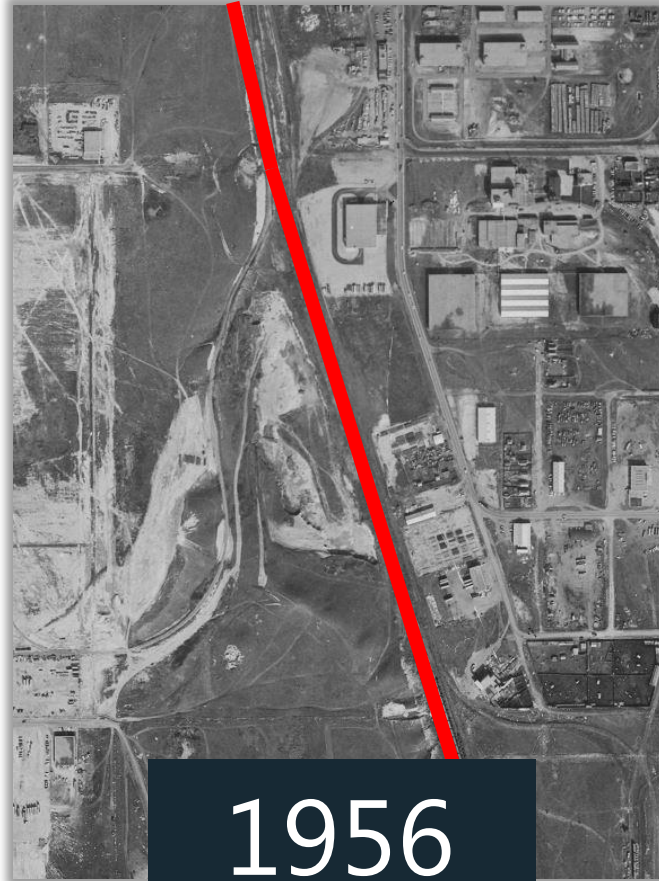
Historical Transit-Oriented Development



Historical Transit-Oriented Development



1924



1956



1972

Historical Transit-Oriented Development

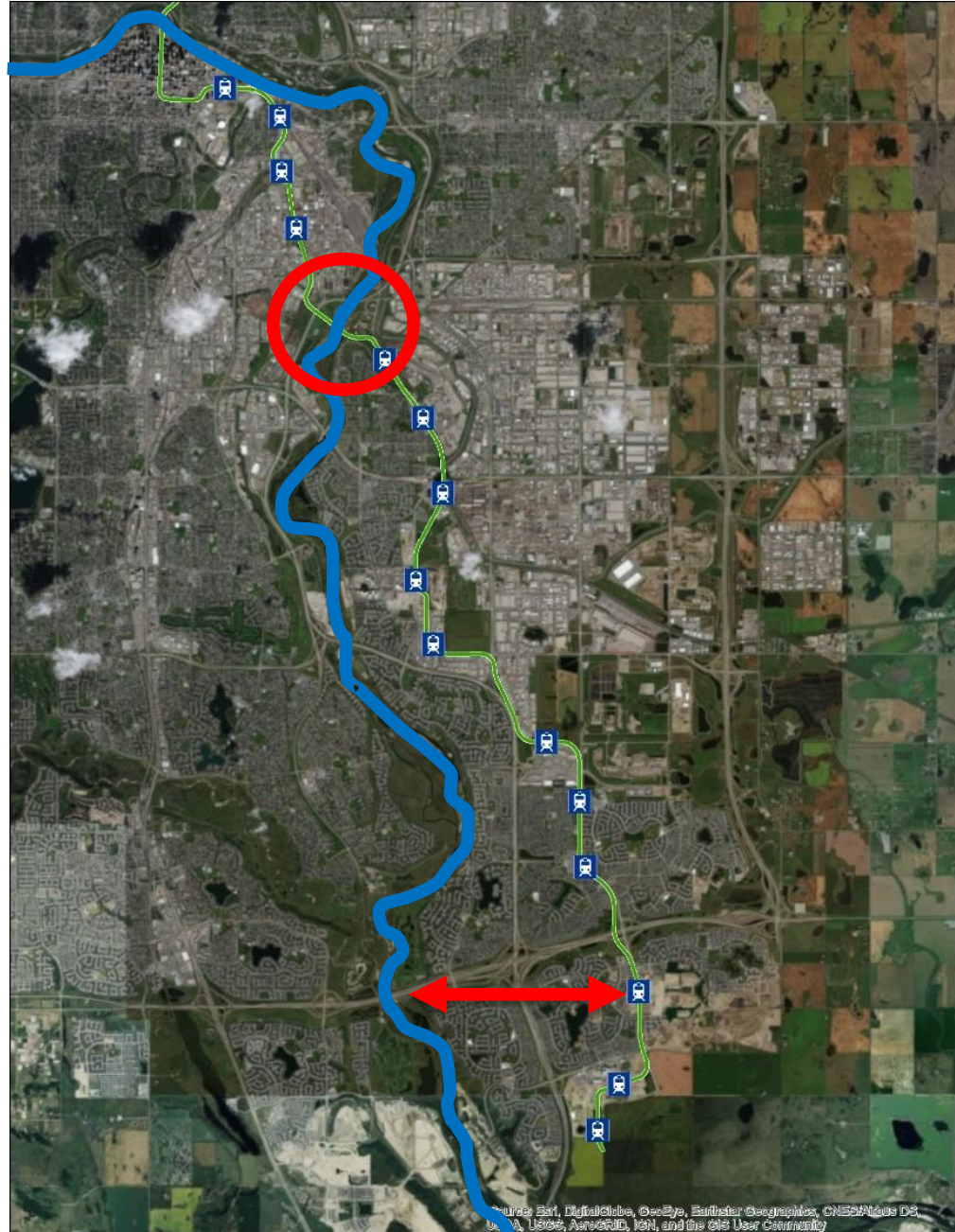


Release Your Inner History Geek

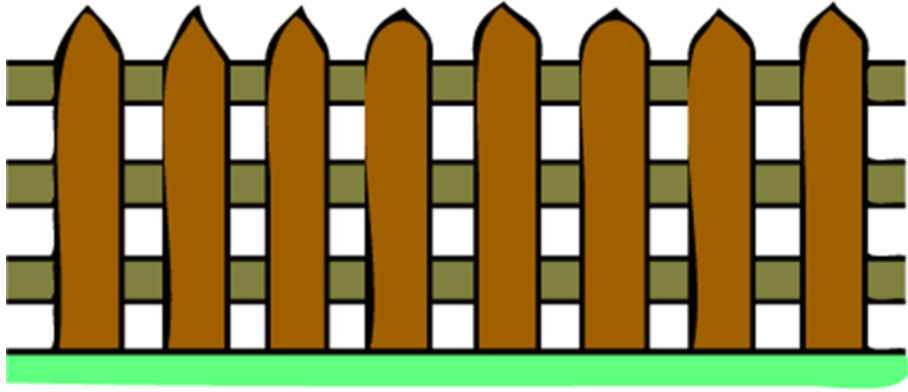


Source: The City (The City of Calgary), 2014a. Aerial Photograph data provided through Data Licensing Agreement, 2014.

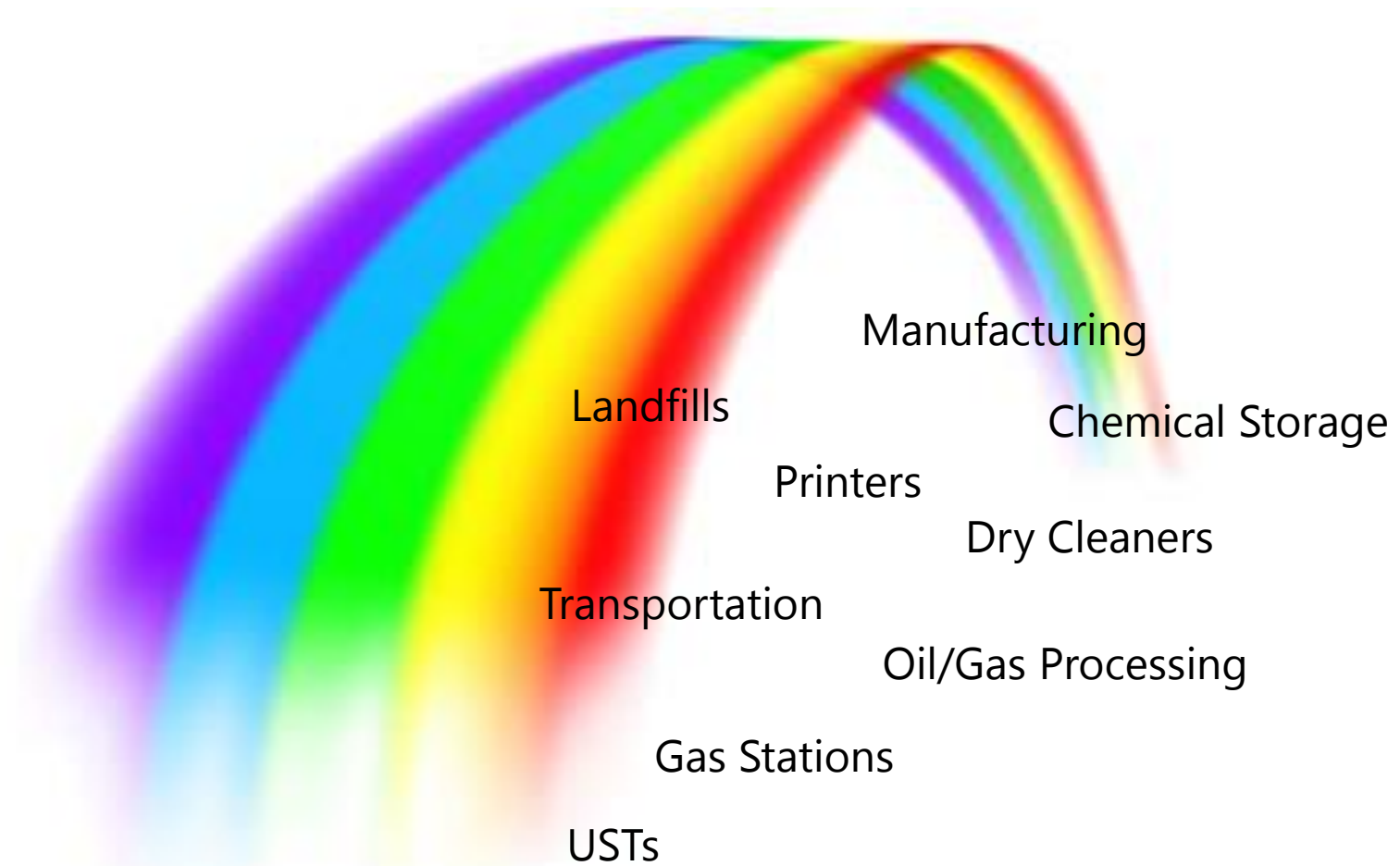
Unique Profile



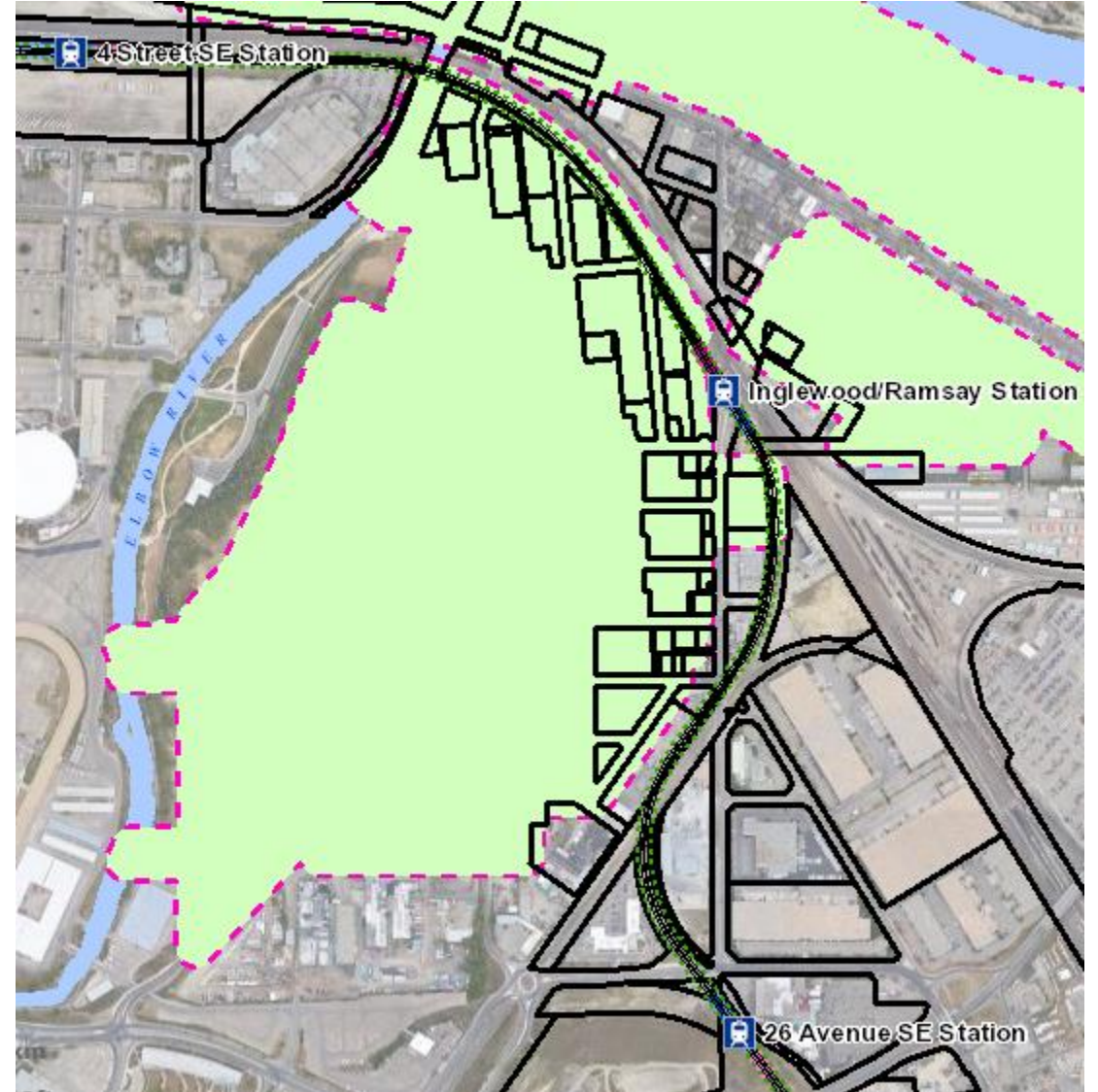
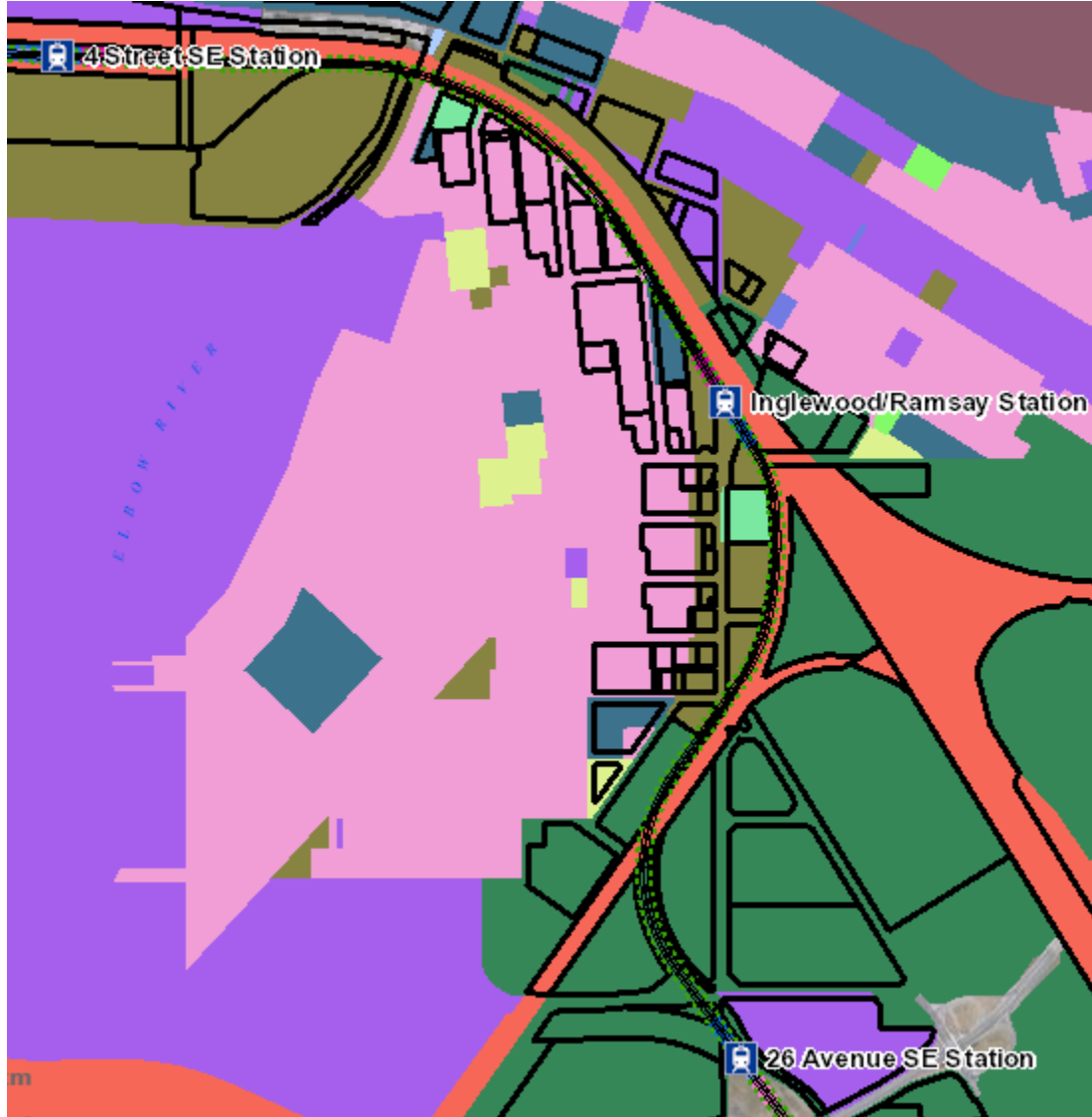
Multiple Properties



Multiple Potential Sources



Multiple Land Uses



Urban Background



Source: <https://all-free-download.com/free-vector/water-pollution.html>

Project Progression



Multiple Specialties/Multiple Purposes



Screening Level ESA



Environmental Reviews and Phase 1 ESAs



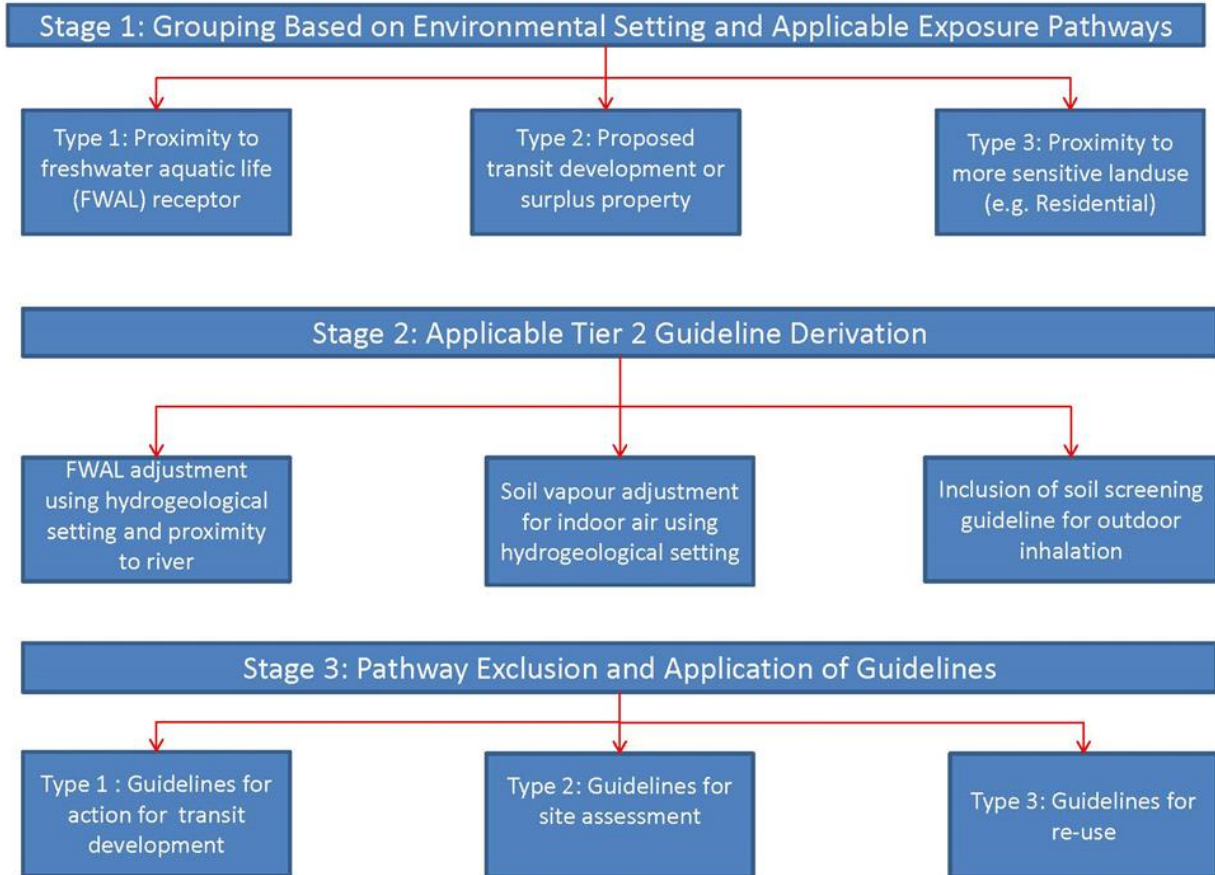
Macroscopic View



Multipurpose Screening Guidelines



Screening Guideline Development



Source: <https://www.99acres.com/articles/what-is-transit-oriented-development-tod.html>

Area-based Phase II ESAs



Considerations for Urban Work



Considerations for Urban Work



Considerations for Urban Work

'A huge, huge step,': Committee approves Green Line LRT alignment and 28 station locations

ANNALISE KLINGBEIL, CALGARY HERALD Updated: June 22, 2017

Advocates worry changes could 'kill the vision' of the Green Line project

MEGHAN POTKINS, CALGARY HERALD Updated: June 28, 2019

UPDATED: Province commits \$1.53B over eight years for first stage of Green Line LRT

ANNALISE KLINGBEIL, CALGARY HERALD Updated: July 6, 2017

The Green Line would be Calgary's biggest infrastructure project. Would a scrapped carbon tax kill it?

By [Trevor Howell](#) StarMetro Calgary
[Madeline Smith](#) StarMetro Calgary
Wed., Jan. 16, 2019 | 4 min. read

Considerations for Urban Work



Considerations for Urban Work



Considerations for Urban Work



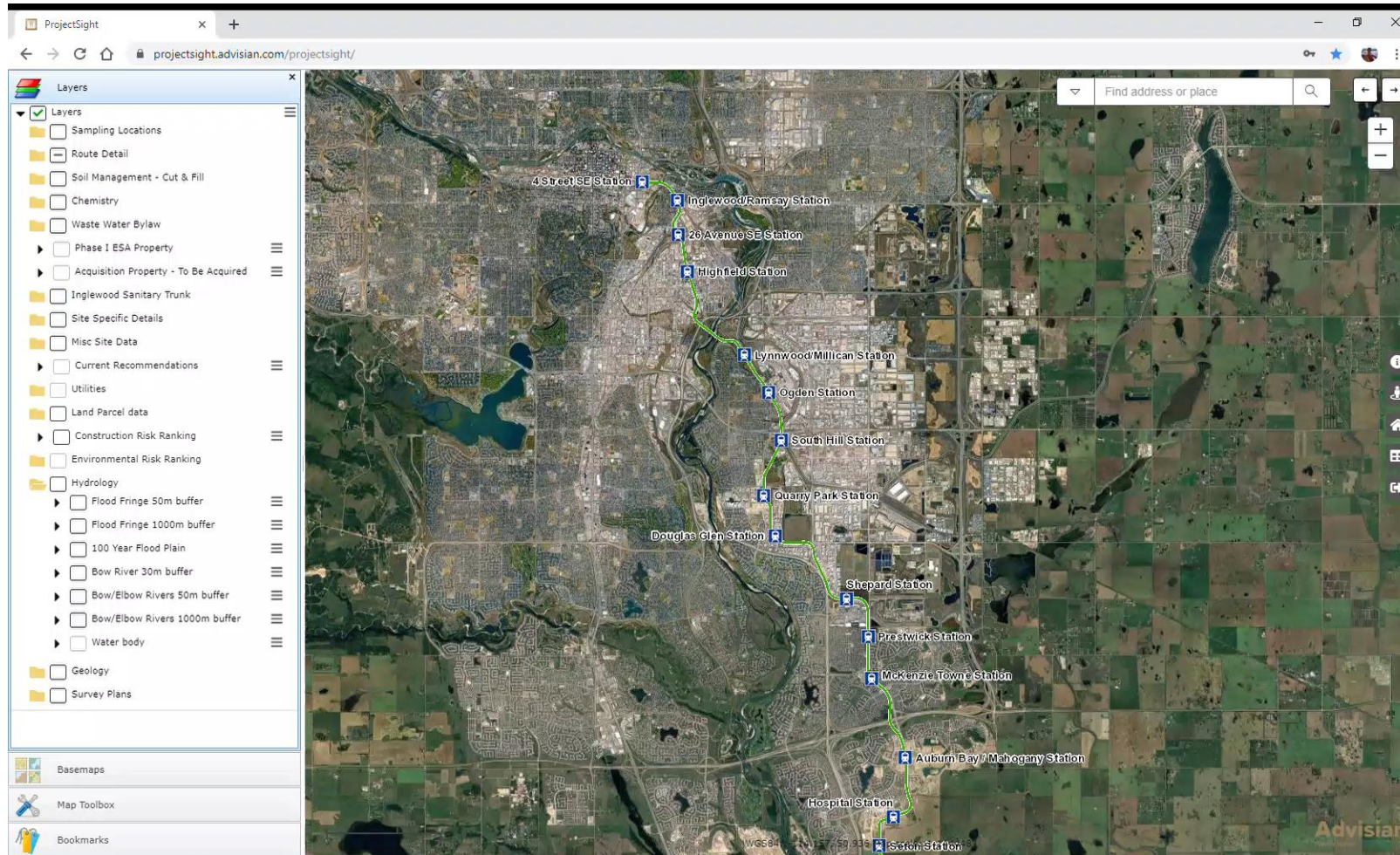
Data Visualization Tools

A world map where the landmasses are filled with a complex, multi-colored grid pattern. The colors include shades of blue, teal, brown, red, and purple, suggesting a data visualization where different regions or countries are represented by different data points or categories. The map is centered on the Atlantic Ocean.

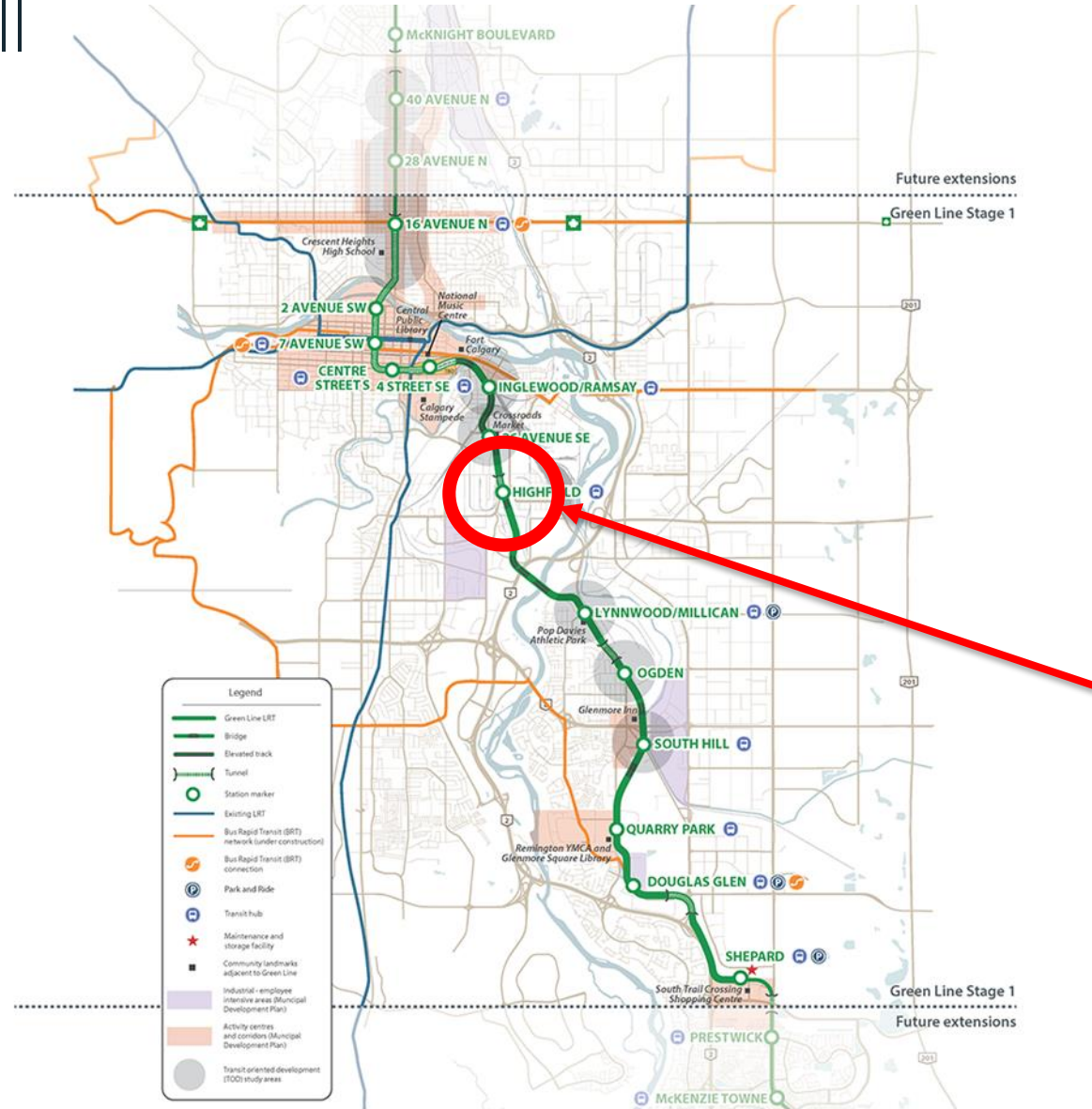
ProjectSight
Visual Information Integration Platform

LAUNCH

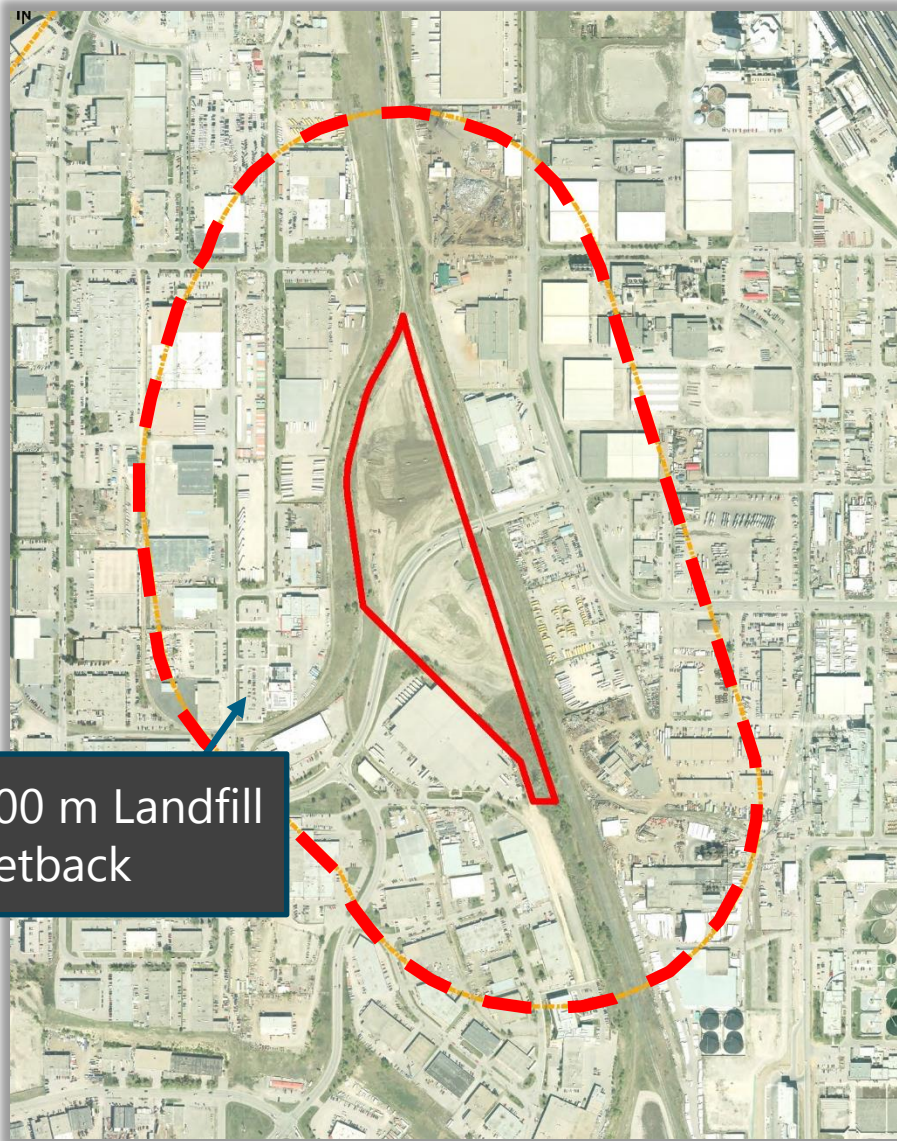
Data Visualization Tools



Highfield Landfill



Highfield Landfill



Highfield Landfill



GRAVEL

BOW RIVER



Highfield Landfill



Highfield Landfill



Full Circle



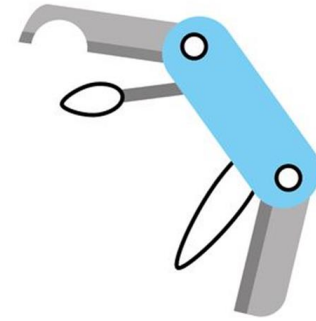
Source: <https://twitter.com/calgarytransit>



Advisian

WorleyParsons Group

Summary





Special Thanks

- Thank you to the following City of Calgary Departments for their permission to present this information:
- Transportation and Infrastructure
- Waste and Recycling Services

