



wood.

*Survey of the Regulatory
Status of Site Closure and
Relief from Responsibility*

RemTech 2019

Ralph Bock

Associate Scientist

Wood Technical Consulting Solution

woodplc.com

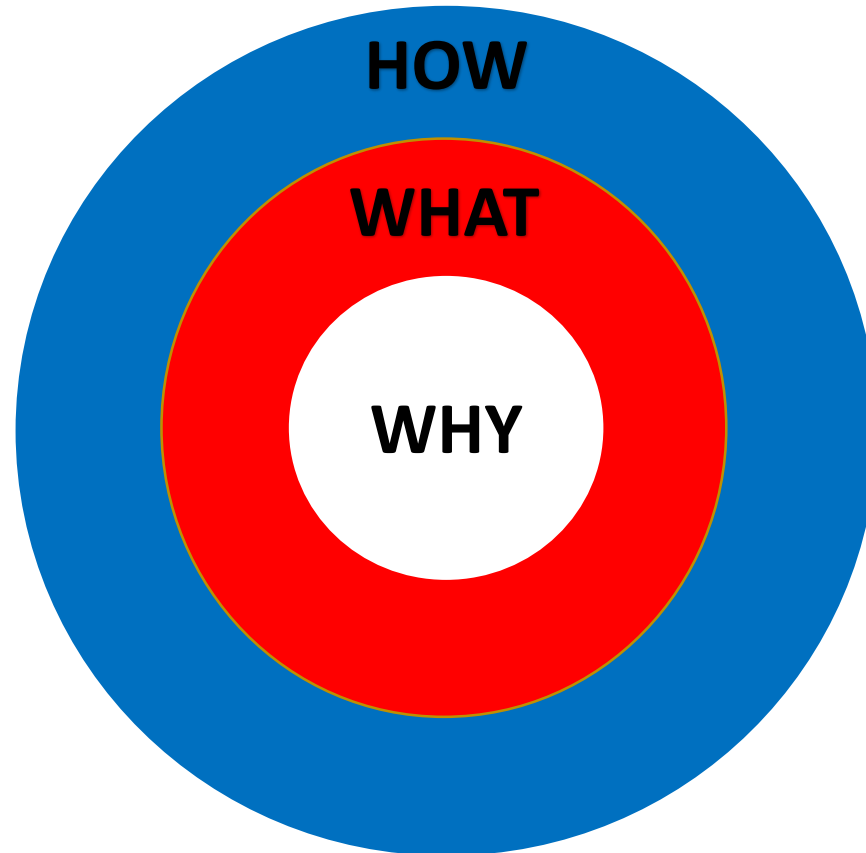
Safety moment



- Recognize hazards
- Personal Responsibility
- Intuition
- Make it a habit

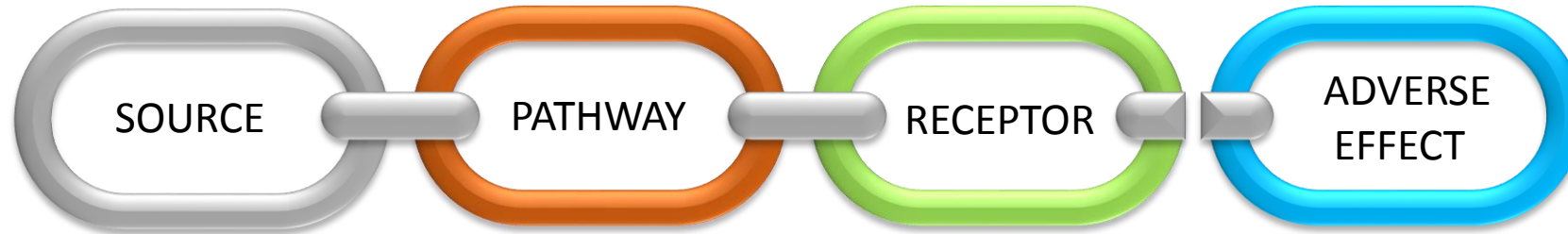
Why are we doing what we are doing

Why?
**Legislative and Social
Imperative for clean
land, water and air**



Definitions

- Corrective Actions



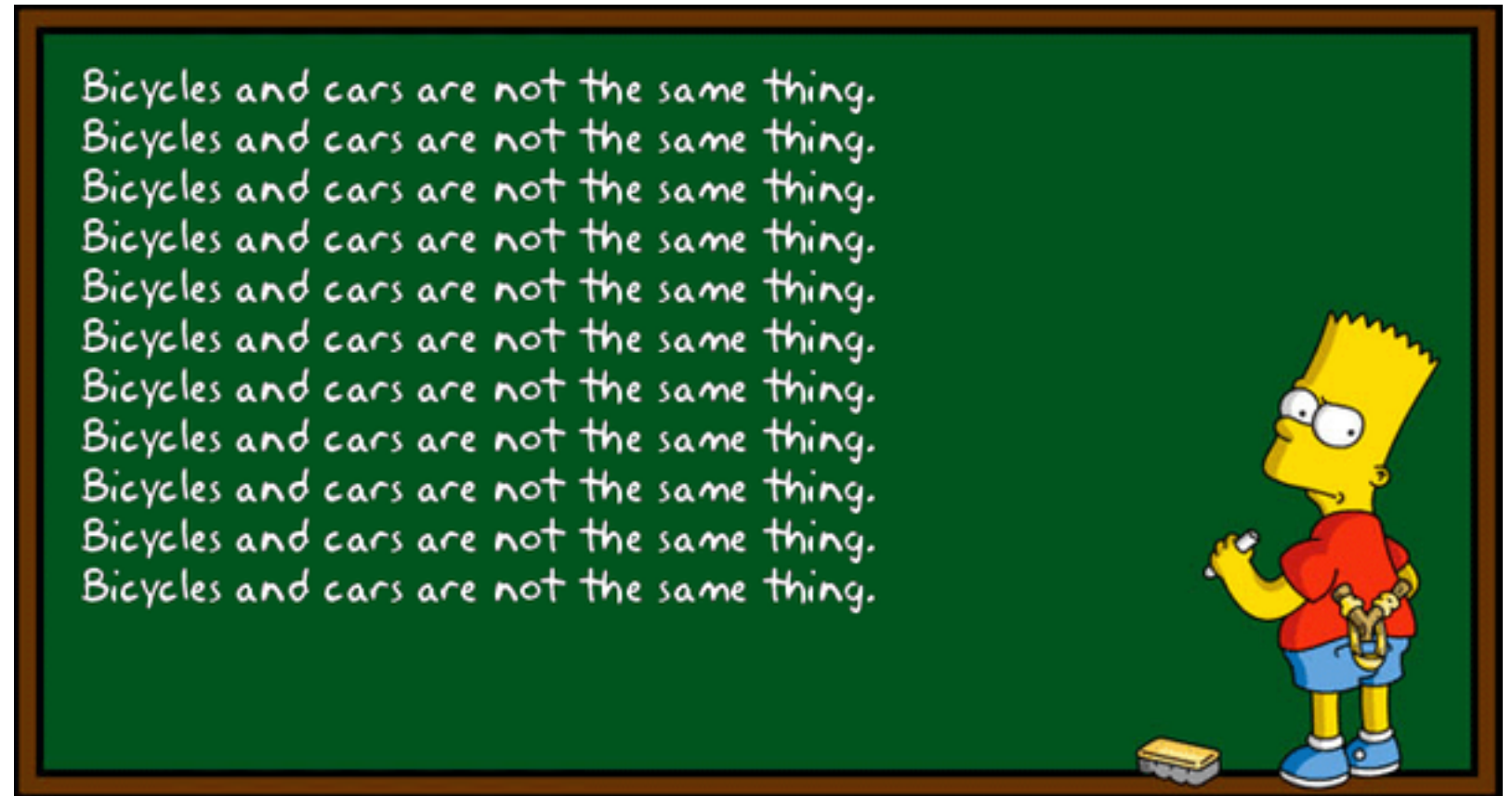
- Closure
- Regulatory Relief
- Controls

Risk Management - Risk Assessment

- THEY ARE NOT THE SAME

- Managing Risk

- Risk Assessment



FTP Comparison

Jurisdiction	Closure					Regulatory Relief				
	Risk Asst	RMP	Phys. Cont.	Eng. Cont.	Admin. Cont.	Risk Asst	RMP	Phys. Cont.	Eng. Cont.	Admin. Cont.
Canada	★	★	★	★	☹	☹	☹	☹	☹	☹
BC	★	★	★	★	★	★	★	★	★	★
Ab	★	★	★	☹	☹	★	☹	☹	☹	☹
Sk	★	★	★	★	★	★	★	★	★	★
Mb	★	★	★	★	★	★	★	★	★	★
On	★	★	★	★	☹	★	☹	★	☹	☹
PQ										
Atlantic	★	★	★	★	★	★	☹	★	★	★
Territories	★	★	★	★	★	★	★	★	★	★

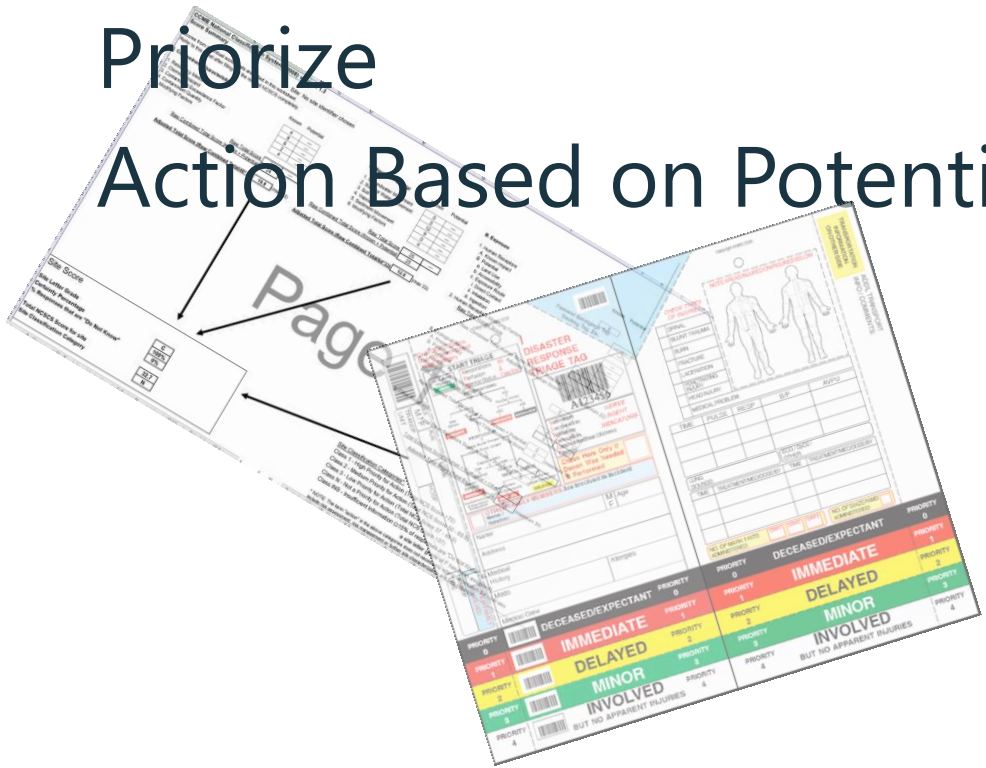


The NCSCS

Medical Triage

Prioritize

Action Based on Potential

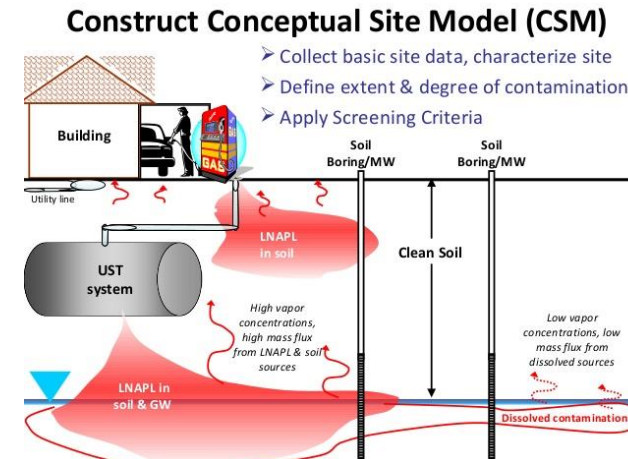
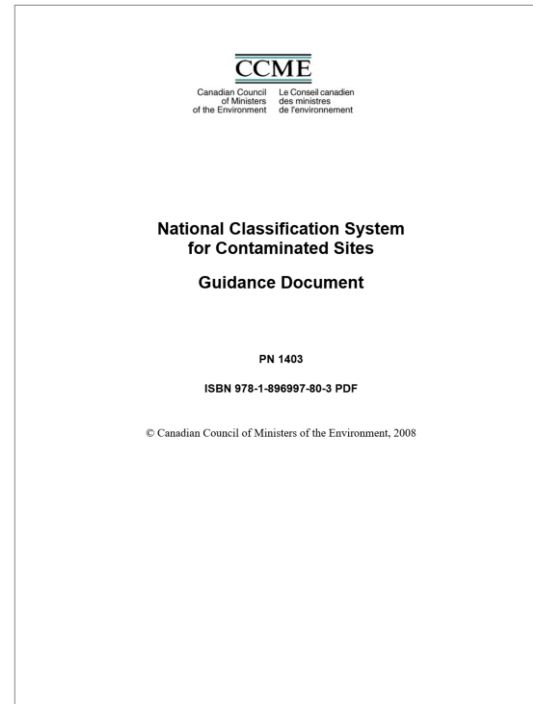


Diagnosis/Treatment
Risk Measurement

Closure Starts at Assessment

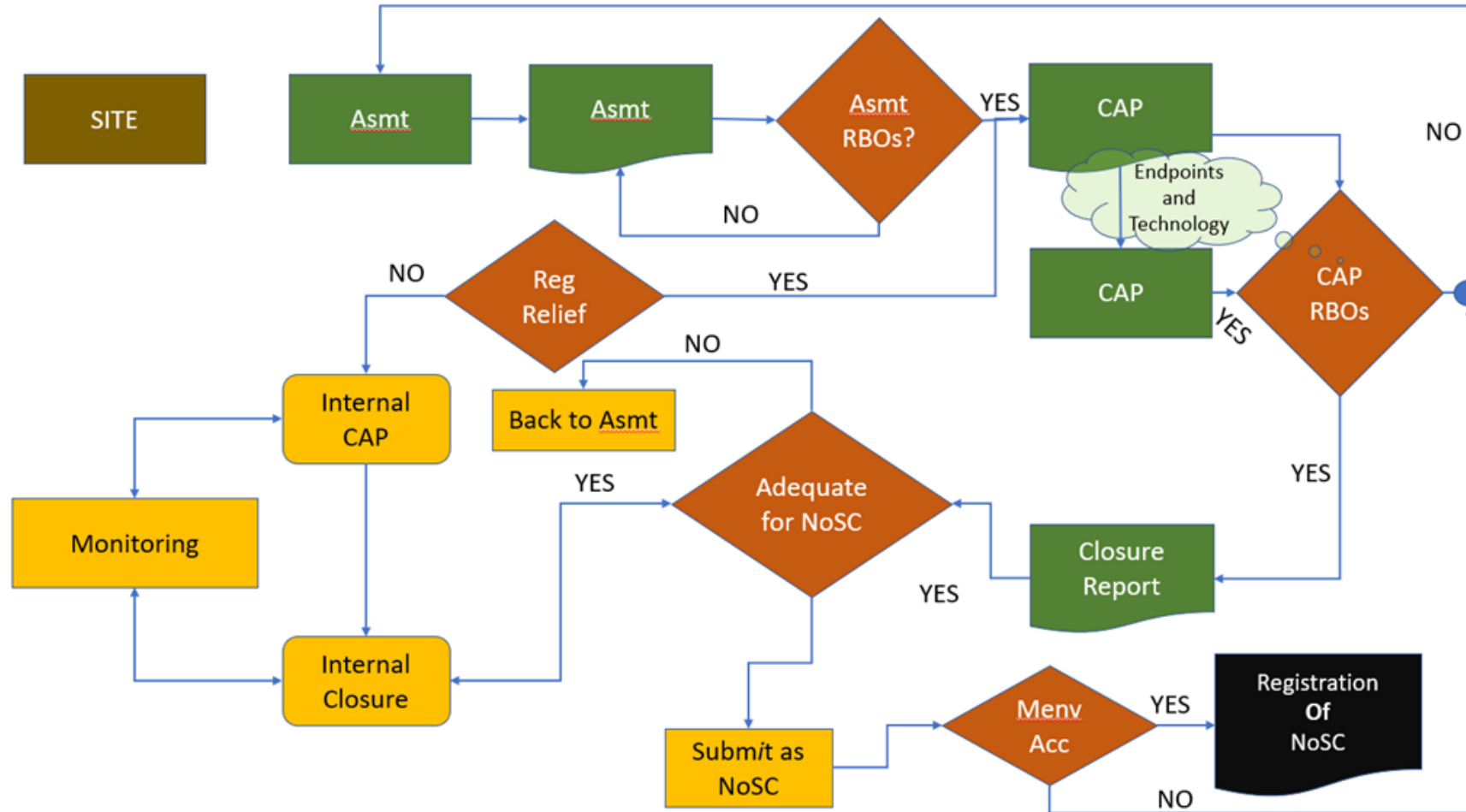
Saskatchewan Environmental Code

Moving Forward in Partnership



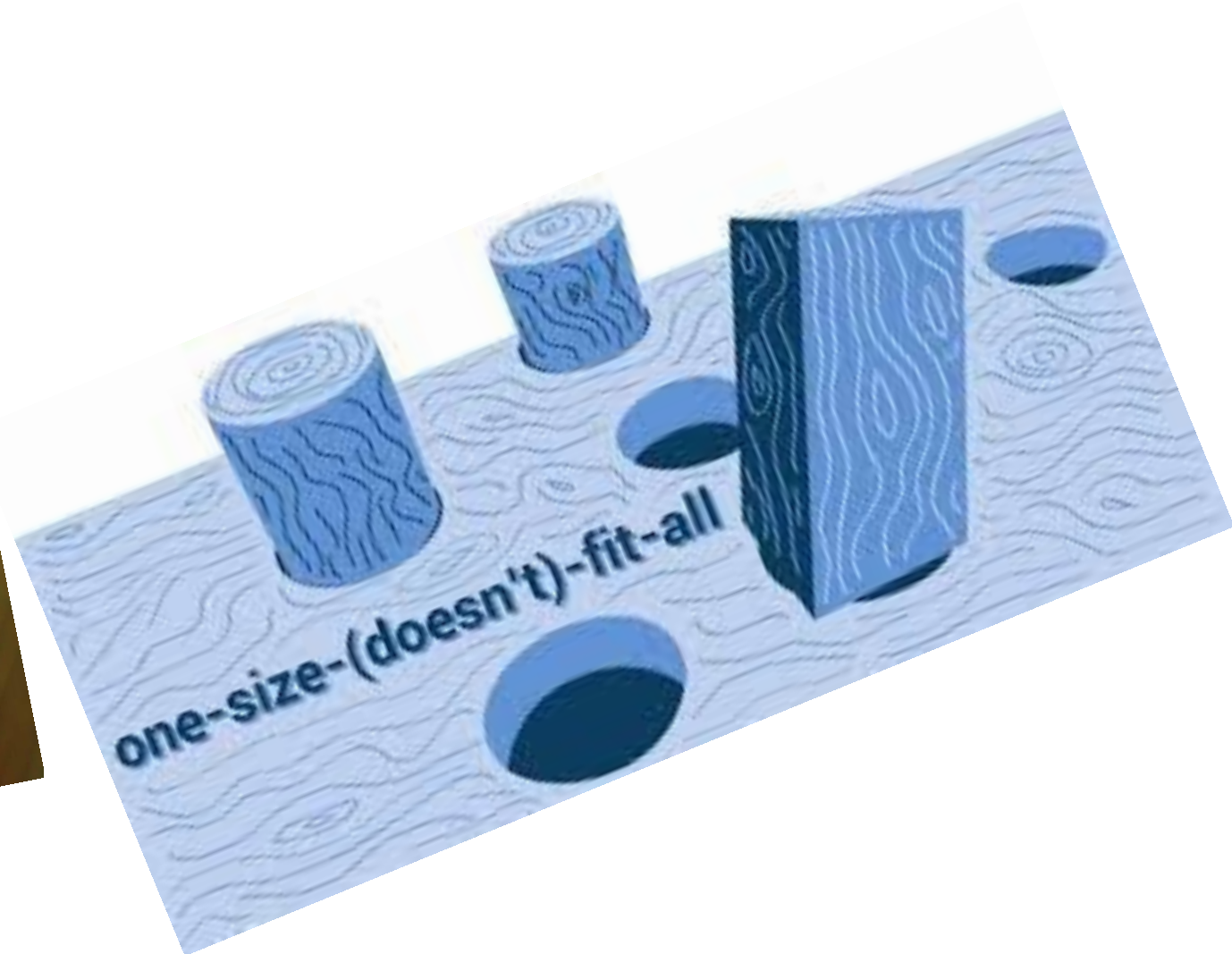
Corrective Actions

Saskatchewan Process



“Closure”

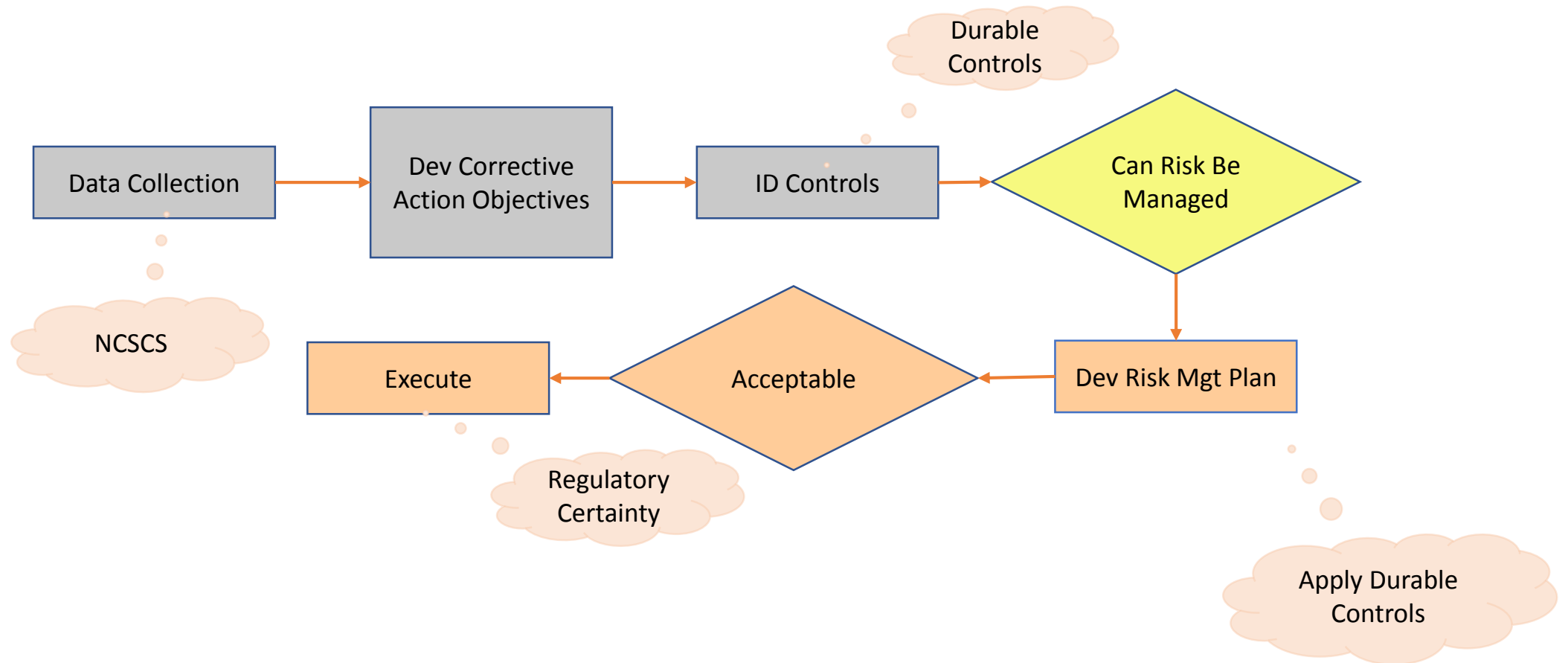
A loaded Term



Regulatory Relief



Risk Based Closure to Regulatory Relief



THE Durable control

- Applies only where condition is known
- Maintain land use, and other controls
- Full disclosure to future buyers,
- Failure further investigation to determine "person responsible"

