

Soil Management and Remediation of Community Scale Brownfields

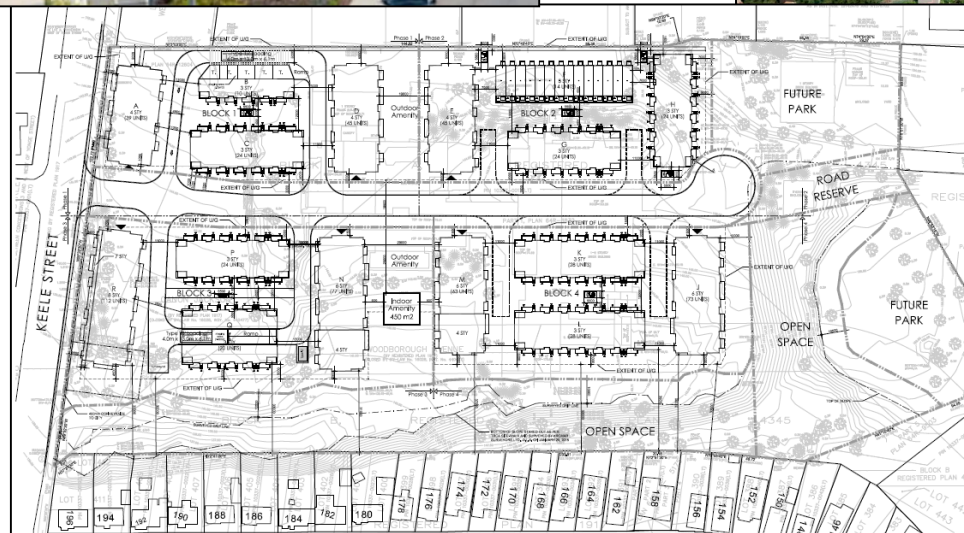
Monisha Nandi, P.Eng., PMP
Remtech – Banff, AB
October 11, 2018

KILMER BROWNFIELD EQUITY FUND L.P.



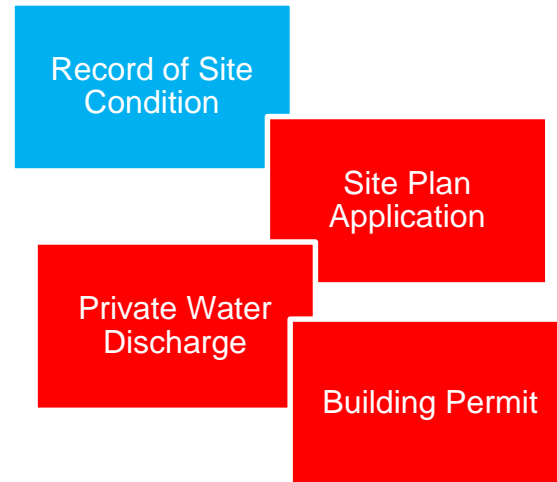
KILMER BROWNFIELD EQUITY FUND L.P.

Community Scale: Challenges and Opportunities



Site Scale

1-2 years



Community Scale

3-10 + years



Single Site

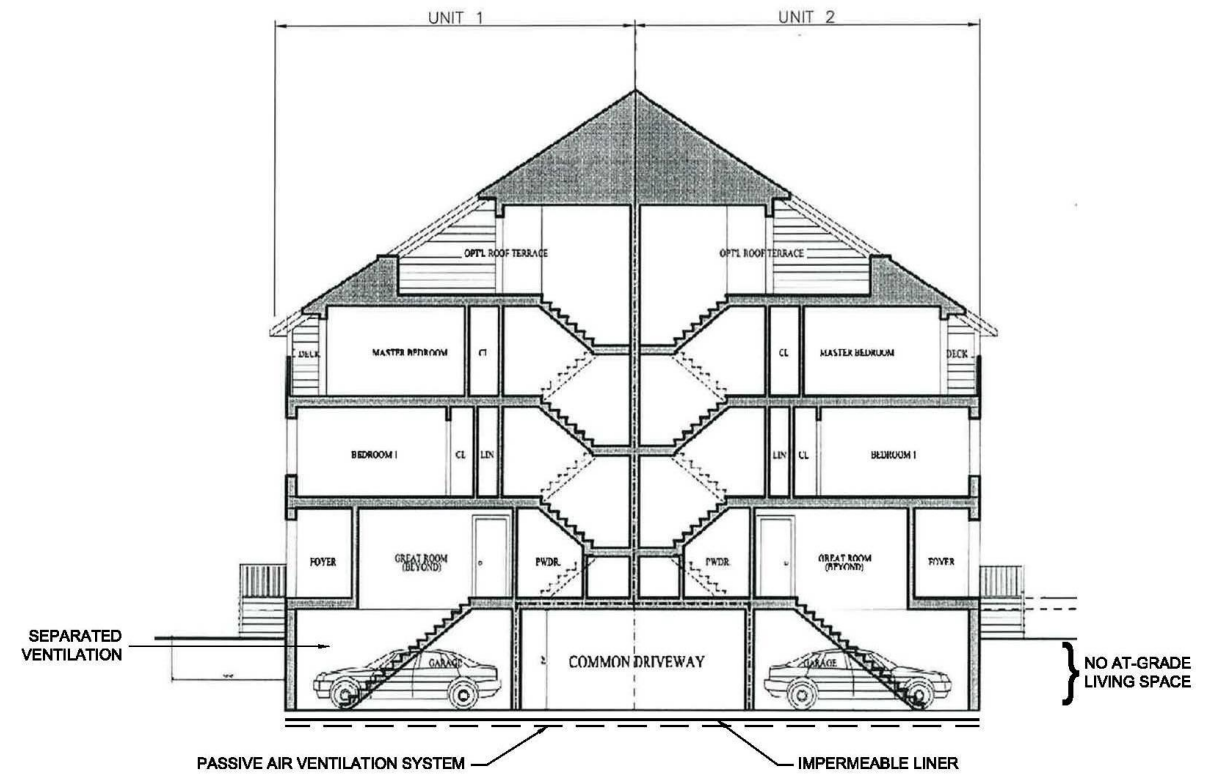


- **Constrained**
- **Limited Options**
- **Integration with built form**



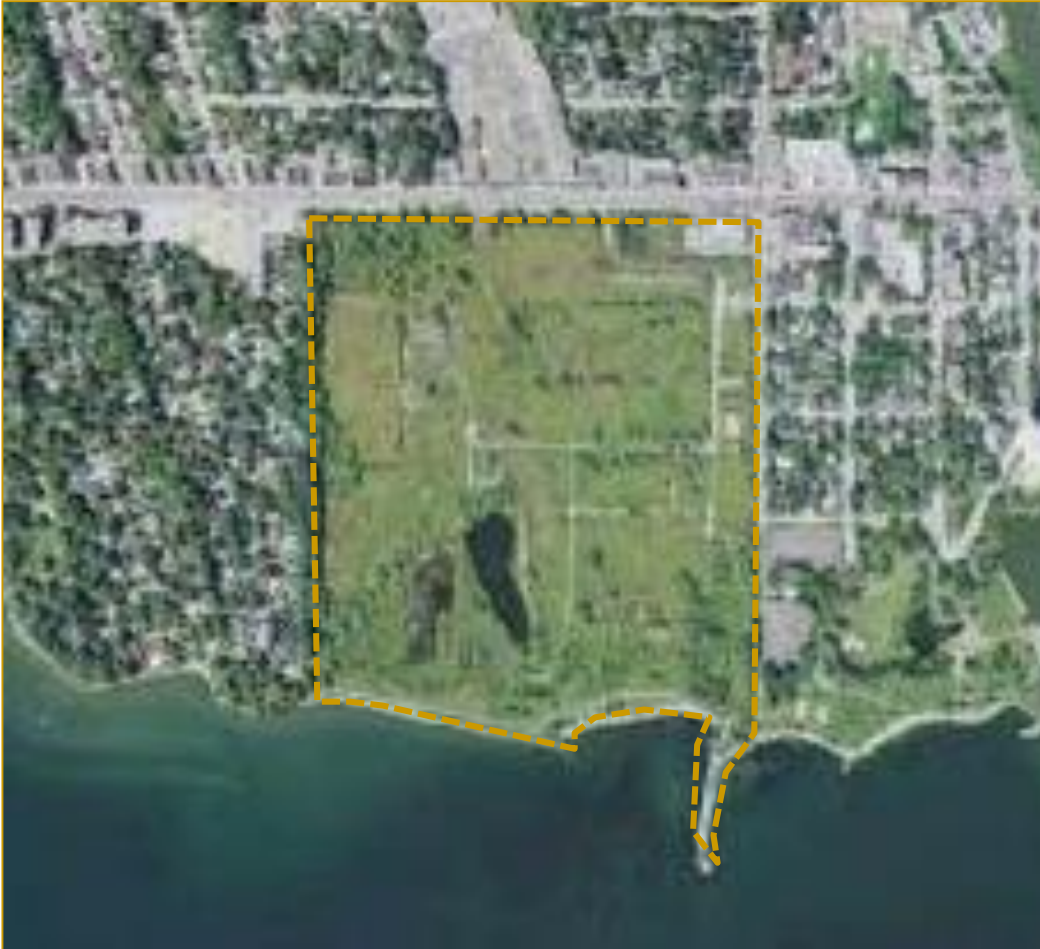
Community Scale

- **Flexibility**
- **Time**
- **Integration with built form**
- **Integration with grading and block plans**
- **Optimization of soil movement**



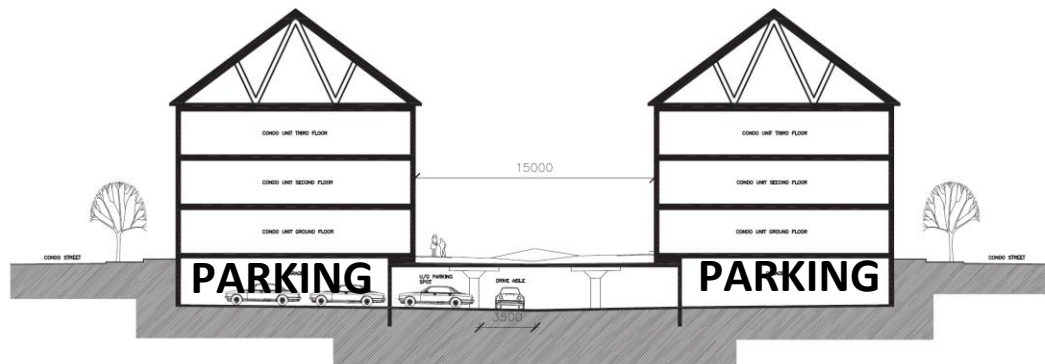


Mississauga, ON (72 acres)



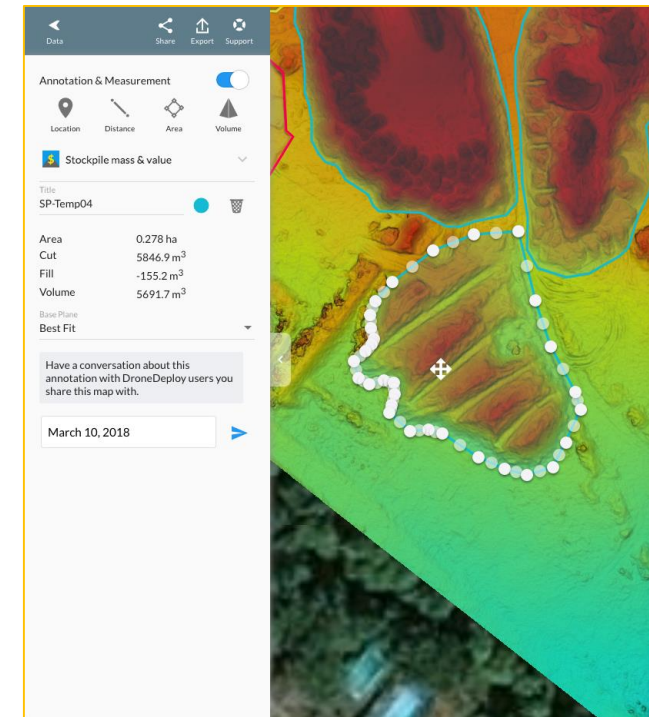
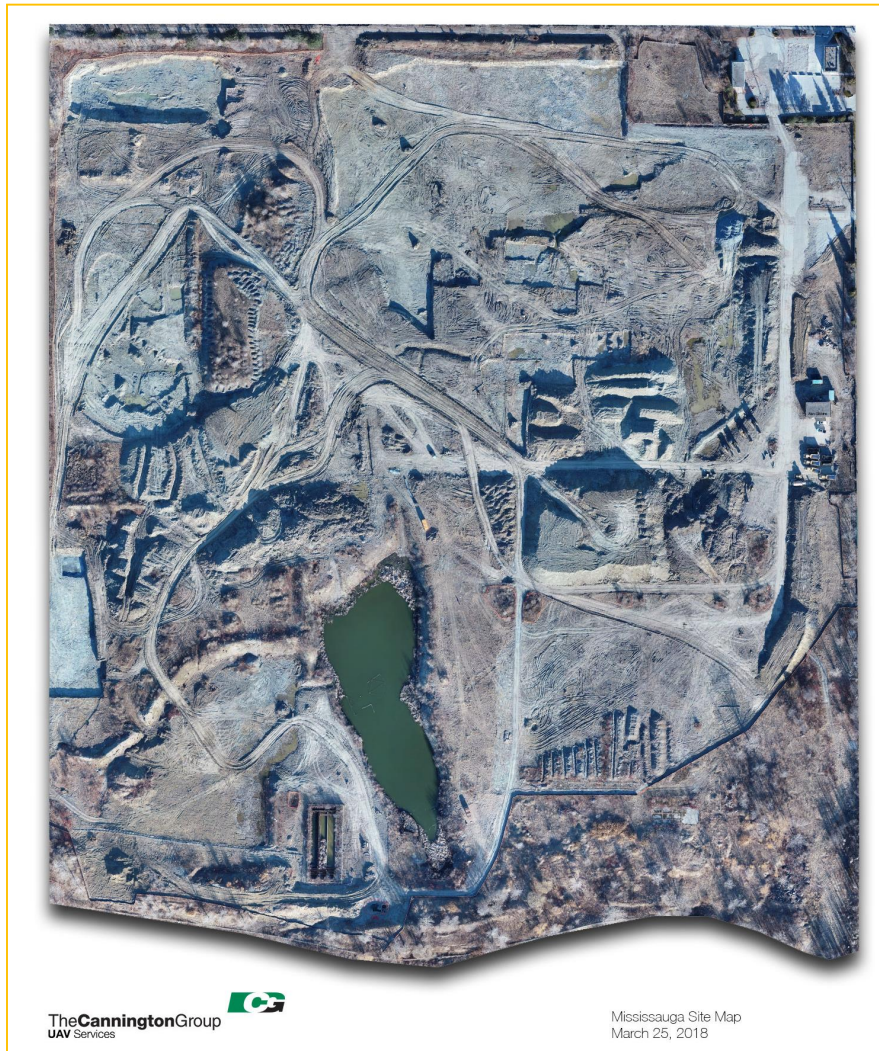
KILMER BROWNFIELD EQUITY FUND L.P.

Case Study 3 – Mississauga, ON

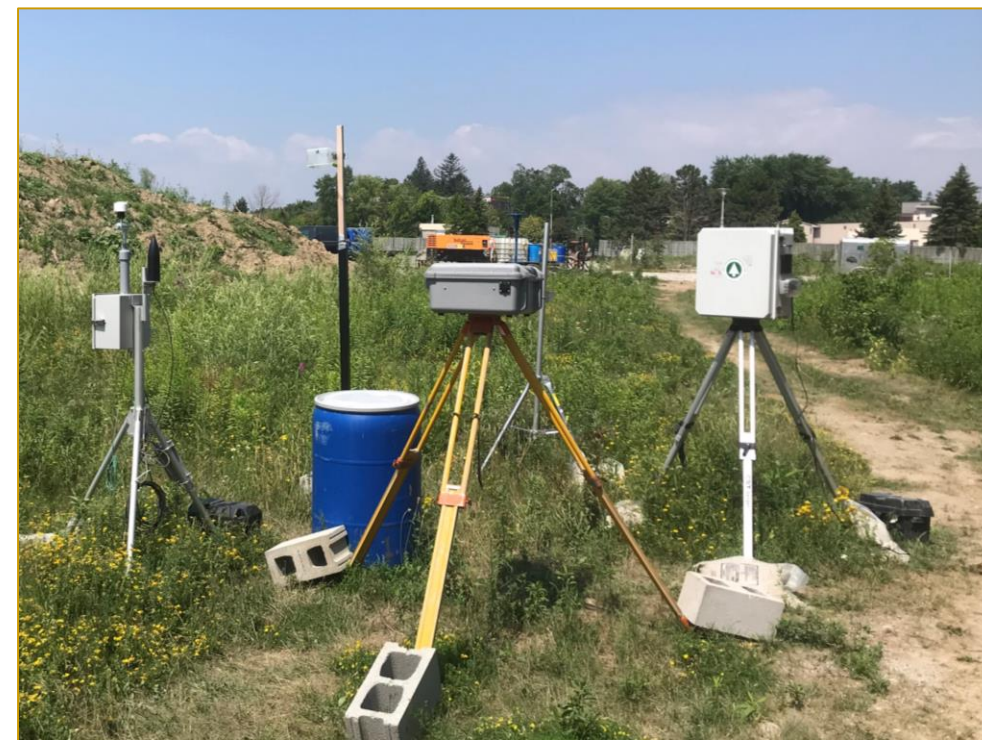




- **Early Assessment**
- **Geo-location**
- **Data Management**
- **Data-supported field decisions**



- **Tracking soil volumes, excavation progress**
- **Reduction of surveying costs**



- ***Monitoring***
- ***At-source mitigation***
- ***Transparency***

Acknowledgements



Port Credit
West Village
Partners LP



urbantech®



Contact

Monisha Nandi

Environmental Director, Kilmer Brownfield Management Limited

mnandi@kilmergroup.com
