



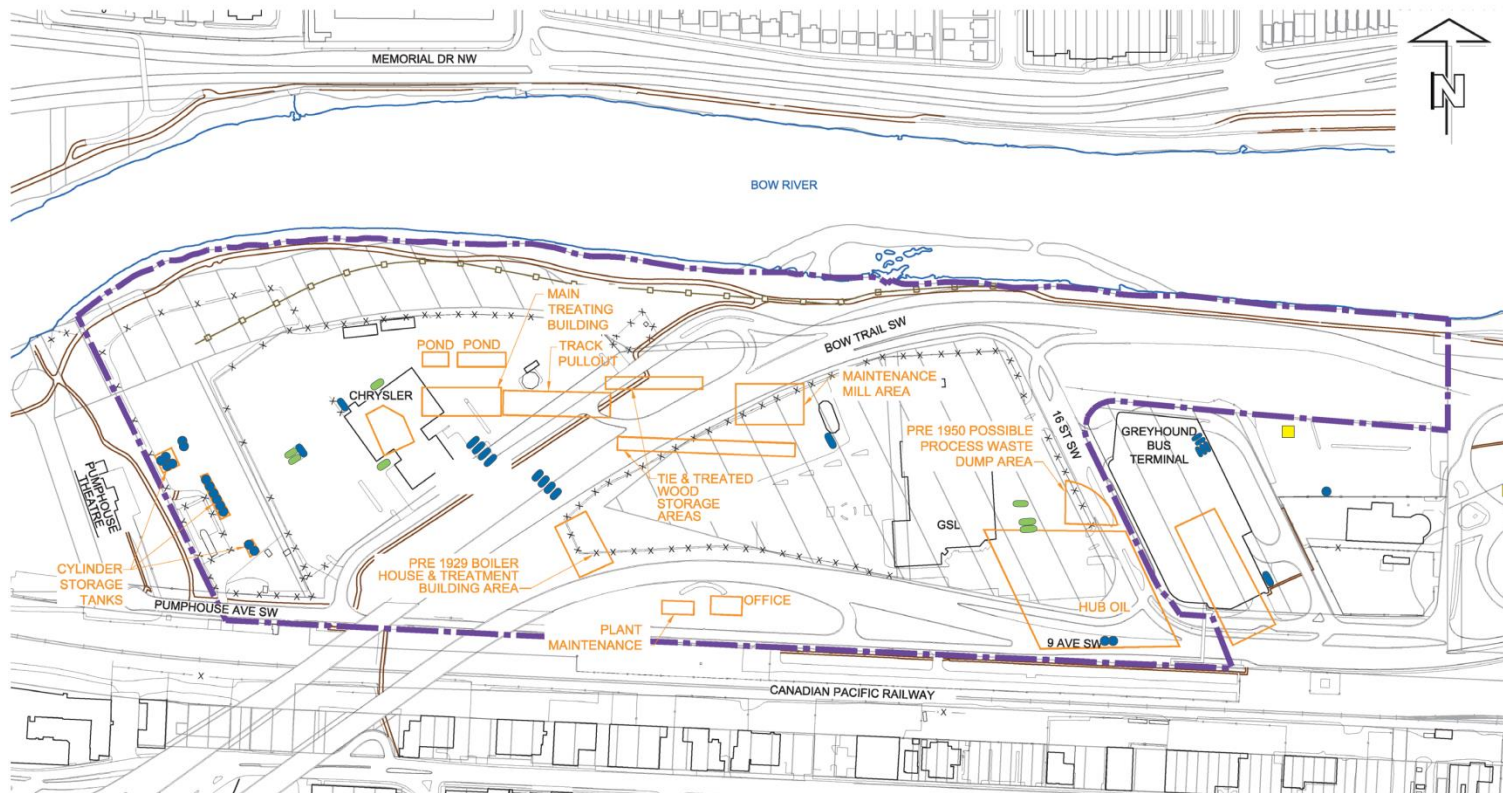
MILLENNIUM
EMS Solutions Ltd.

CALGARY WEST VILLAGE:

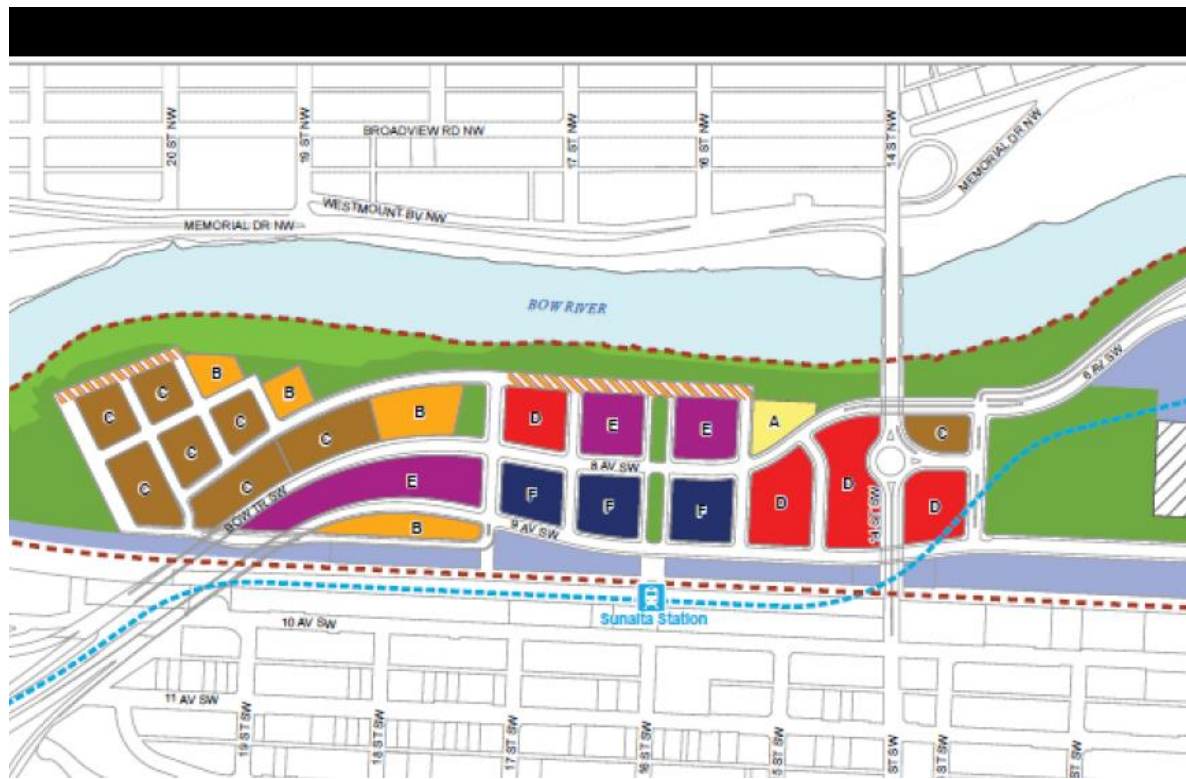
USE OF HUMAN HEALTH RISK ASSESSMENT TO INFORM REDEVELOPMENT SCENARIOS



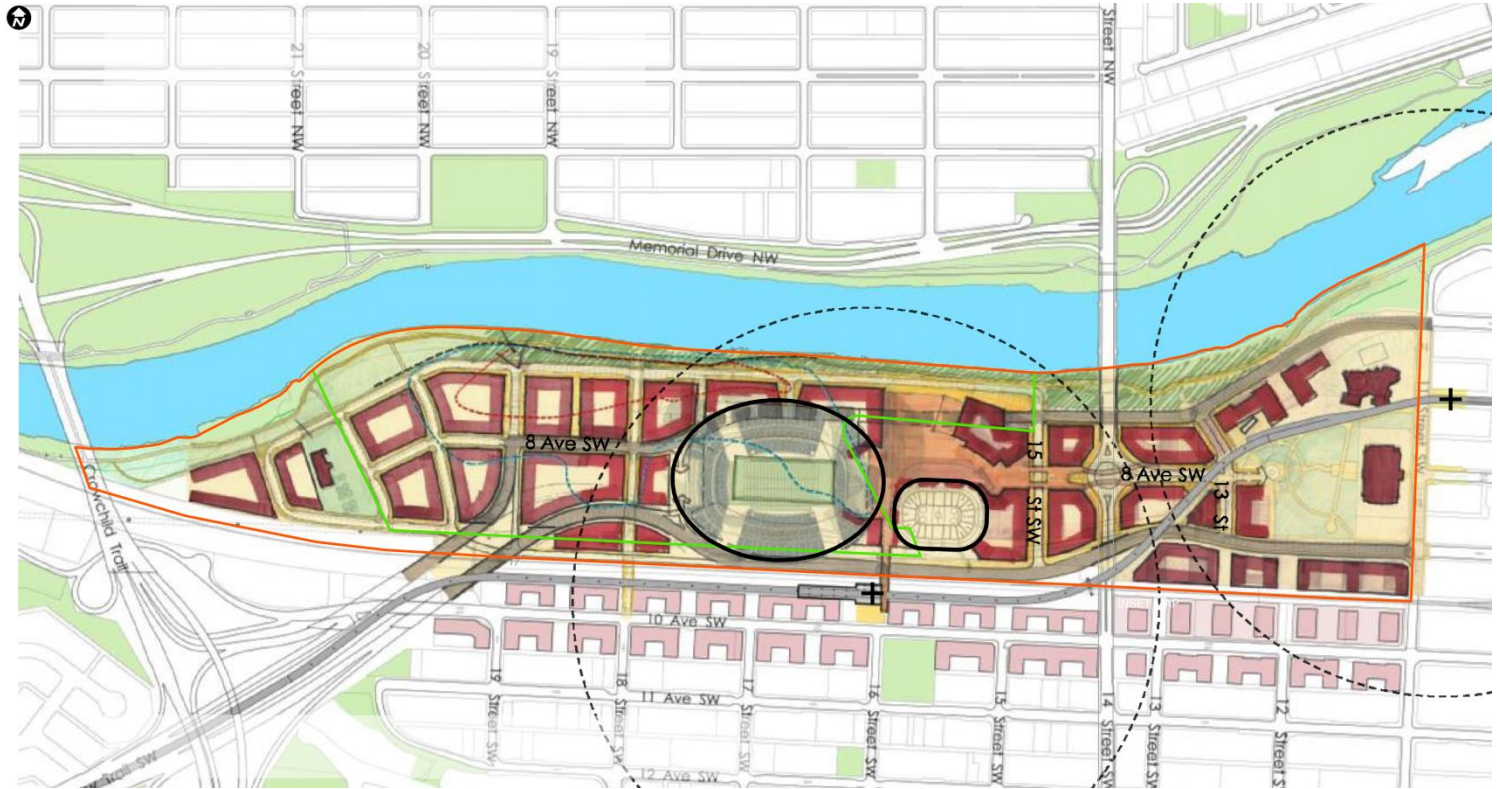
Site Overview



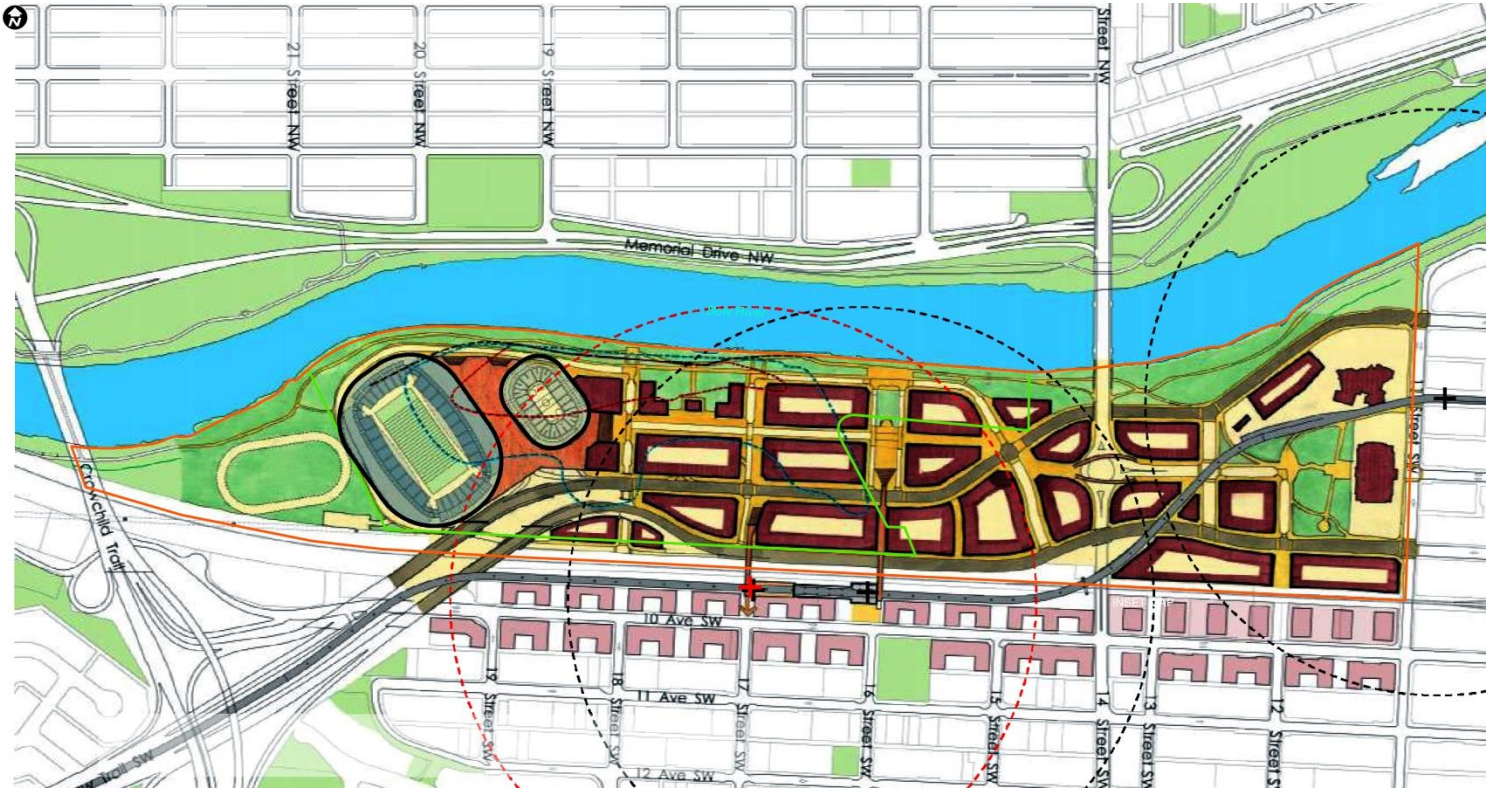
West Village Area Redevelopment Plan



CalgaryNEXT proposal



CalgaryNEXT proposal



2015/2016 Activities

- Site investigation (presented earlier)
- Human health risk assessment
- Remedial options (up next)

Human Health Risk Assessment

- Assess risks to human health
- Inform development scenarios
 - Management/remediation requirements
- Identify where additional assessment is beneficial
- Current and future risks

HHRA Methodology

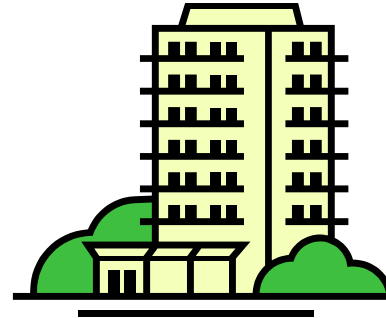
- Standard risk assessment model
- Methods based on Alberta/Canada guidance
- Consider redevelopment scenarios

HHRA

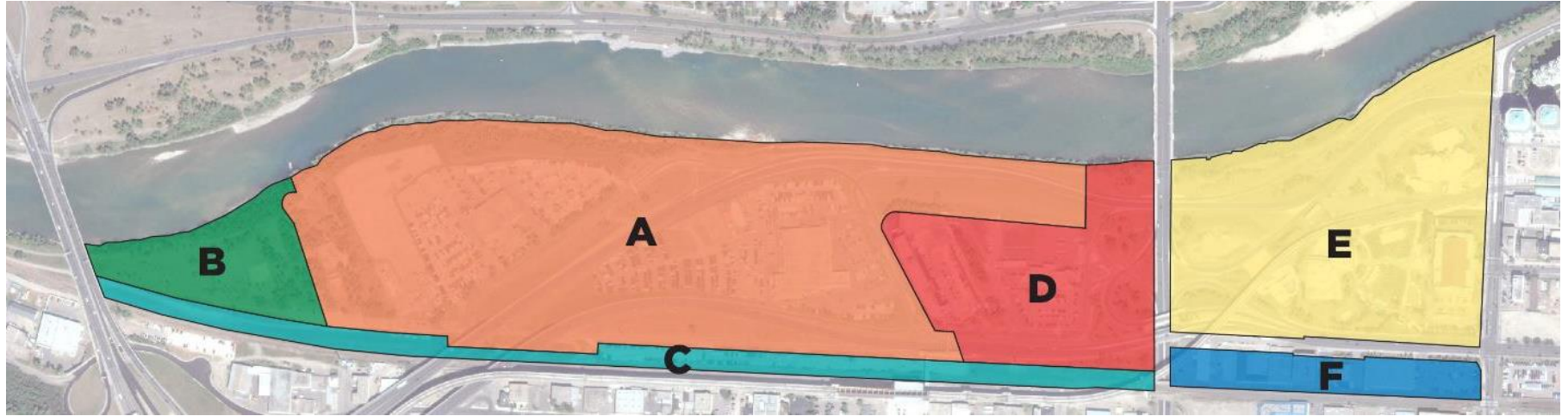
DON'T ASSESS
BASED ON THIS:



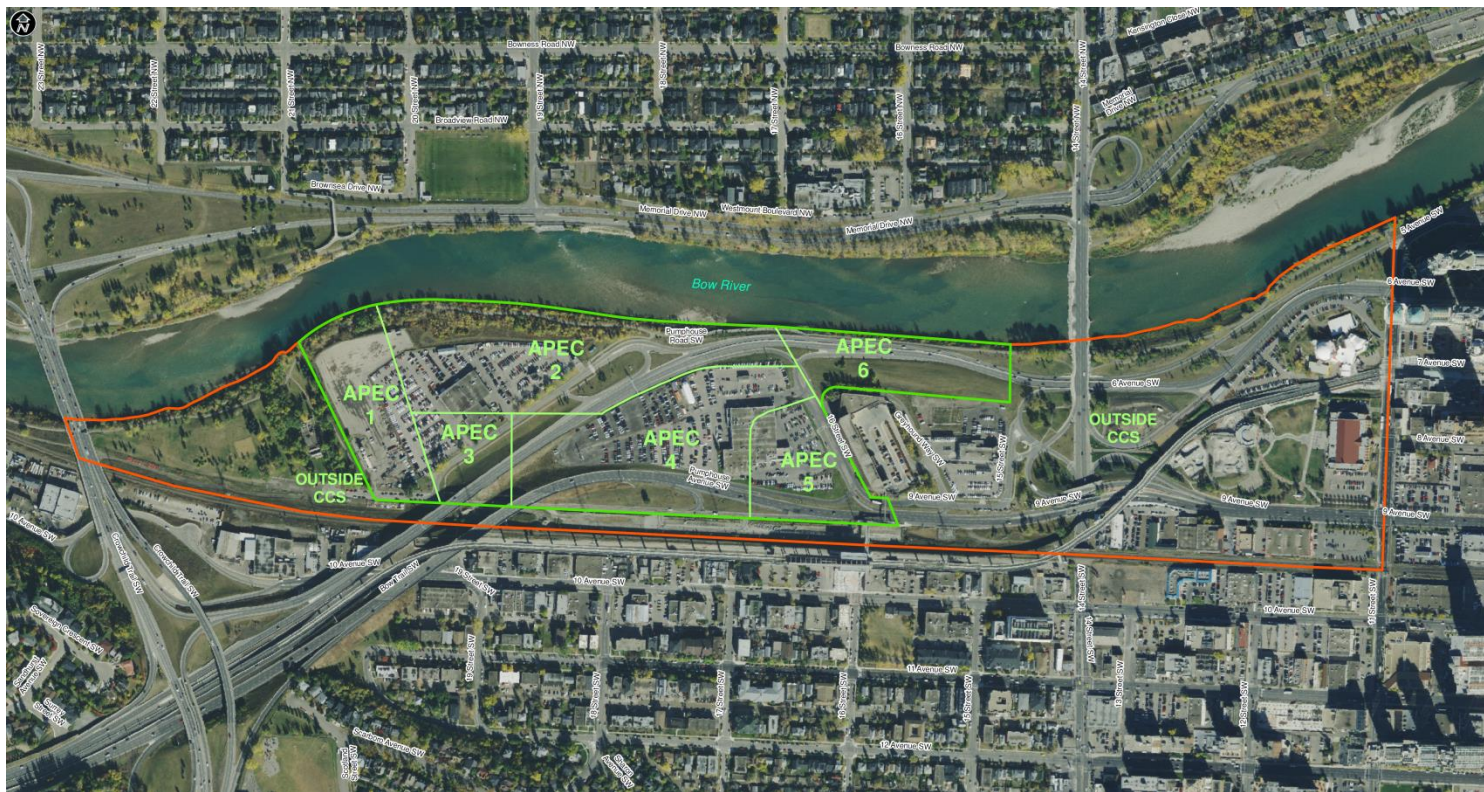
IF WHAT WE
HAVE IS THIS:



Areas of Concern



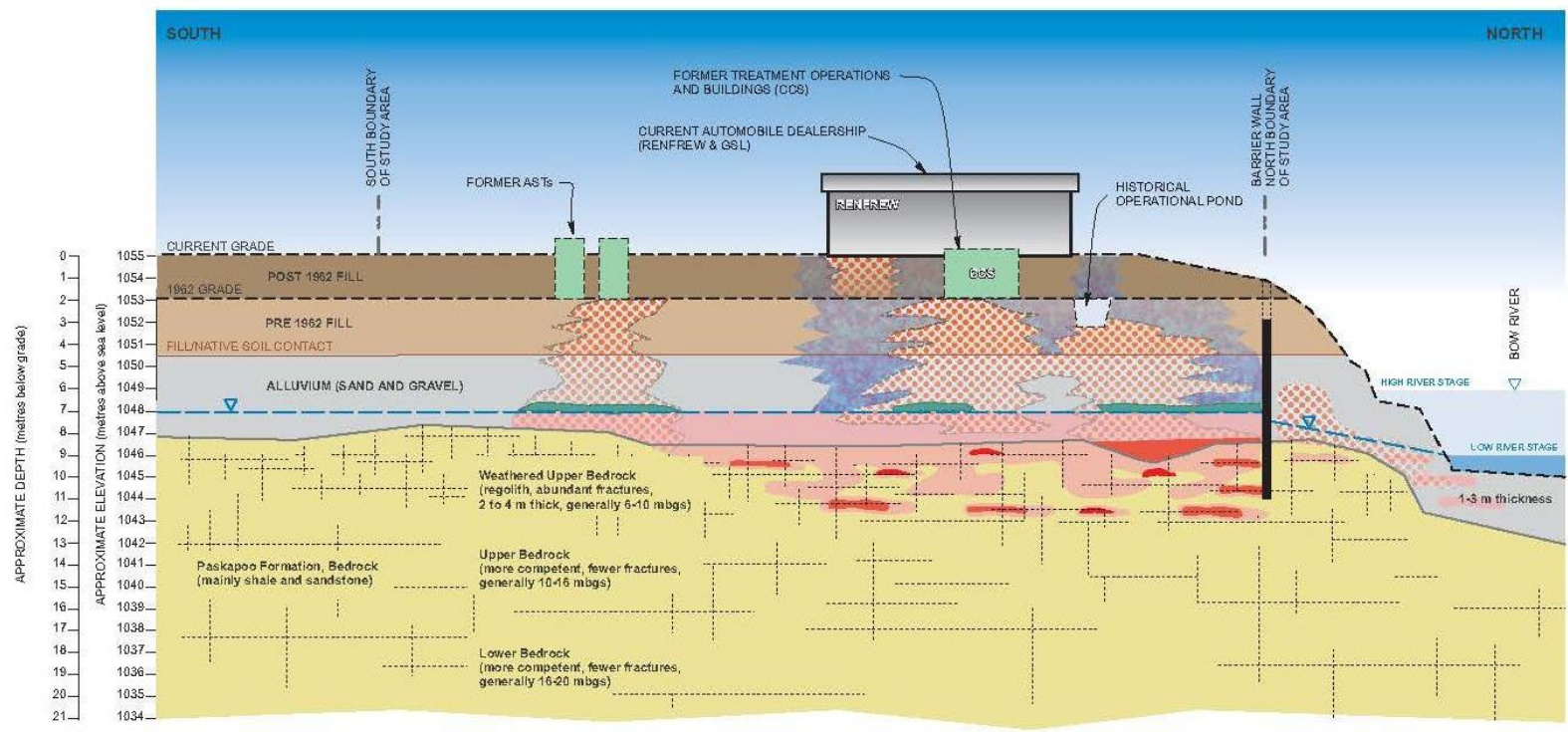
Areas of Concern





MILLENNIUM
EMS Solutions Ltd.

Contaminant Situation



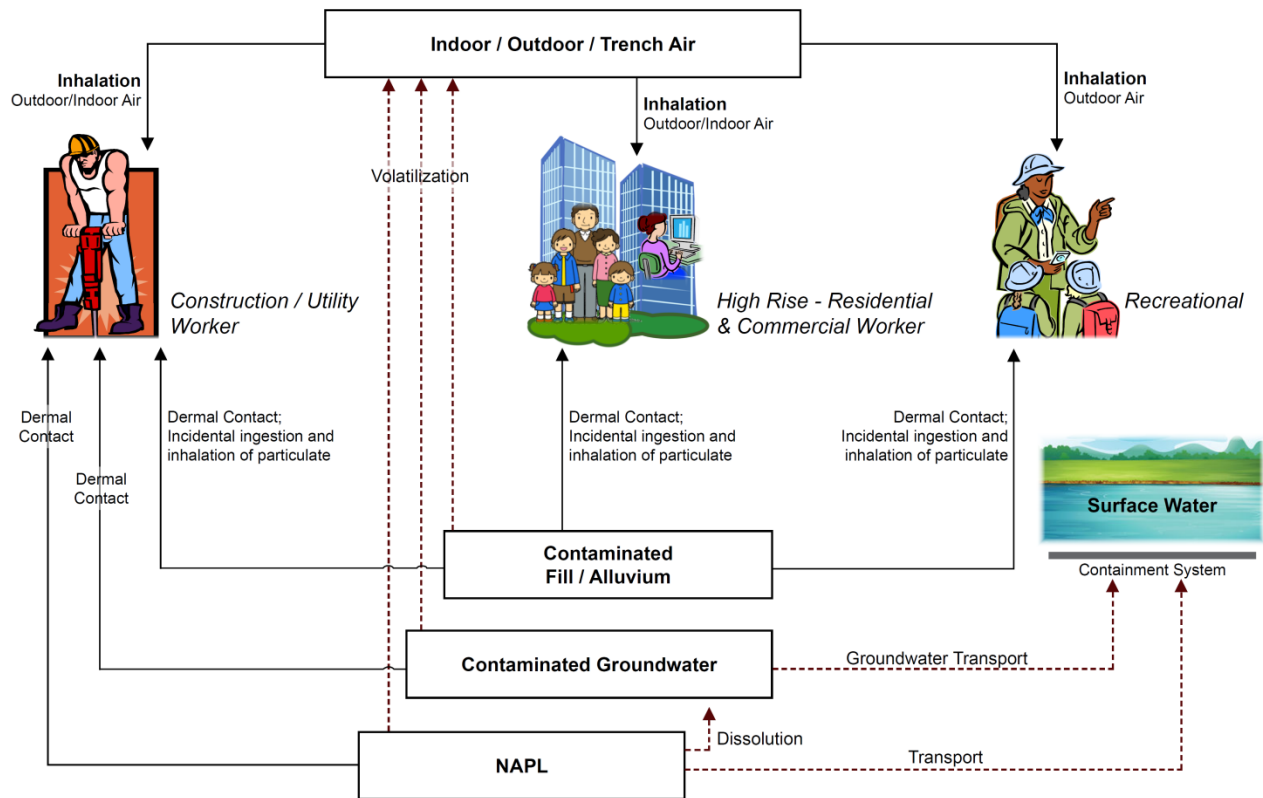
Chemicals of Potential Concern

- Screened vs. guidelines, substances with no guidelines
- PHC (incl. BTEX); PAH (creosote-related); halogenated aliphatics, aromatics, phenols; dioxins/furans; metals

Land Use Assumptions

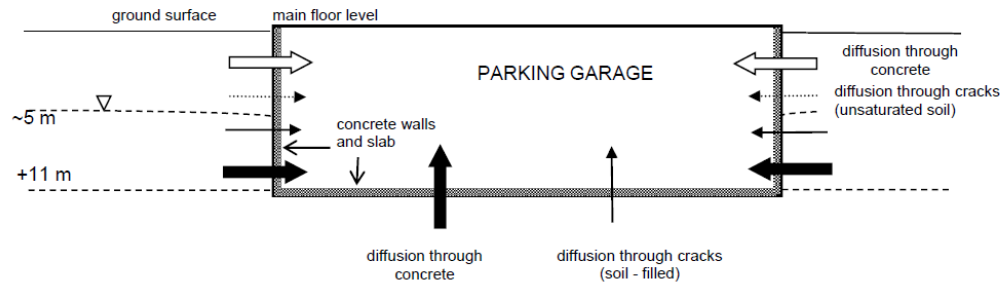
- No single-family residences
- No ground level residential
- Underground parkades in most buildings
- Municipal water supply

Conceptual Site Model



Vapour modelling

- Standard assumptions based on small buildings
- Want to look at high rise with parkade
- Effects of risk management



HHRA Results

- Direct contact – ok with 1 m clean soil in green spaces
- Outdoor vapour inhalation – ok
- Indoor vapour inhalation (parkade/high rise) – ok
- Some risks for workers in trenches → manage

Limitations of the HHRA

- Only considers human health
- Only considers risks within the proposed development area
- Based on specific redevelopment plans
- Limited data outside Canada Creosote site

Challenges/Learnings

- Coordination between multiple firms
- Tight timeline and conducting HHRA while data still being collected
- Complex site, large area
 - Outstanding data gaps, particularly outside CCS

Acknowledgments

- MEMS project team (Deirdre Treissman, Kelly Gough, Nailish Samanani, Brandon Smith, Jason Lamberts, Andre Christensen, David Williams)
- Golder (Ian Hers, Parisa Jourabchi)
- Advisian, AECOM, Barr Engineering
- Calgary Municipal Land Corporation