



Transport  
Canada

Transports  
Canada



Public Works and  
Government Services  
Canada

Travaux publics et  
Services gouvernementaux  
Canada



# DESIGN/BUILD - ROCK BAY REMEDIATION PROJECT STAGE 3

REMTECH  
OCTOBER 2015

Stephen Pinto, P.Ag, EP, B.Sc



# PRESENTATION OVERVIEW

---



- Brief Background and Site History
- Remedial Objectives
- Project Design
- Construction Plan
- Challenges and Changes to Design
- Work to be Completed



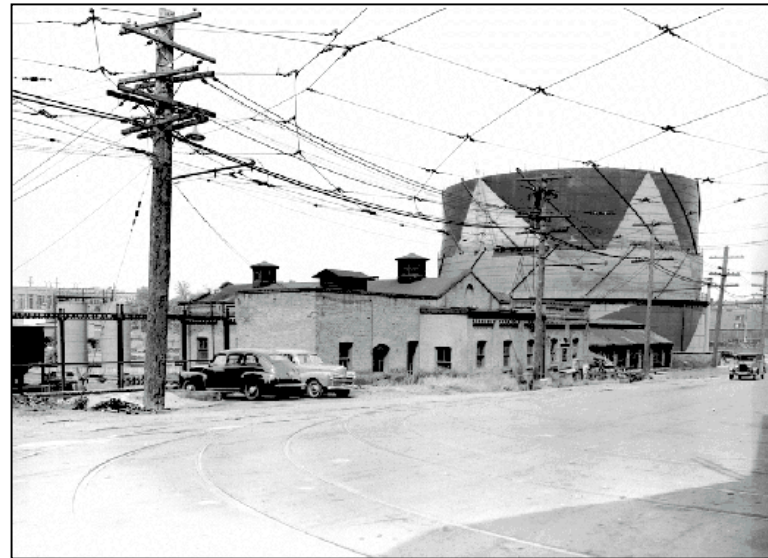
- Victoria Harbour
- 1.7 km to BC Legislature
- 1.1 km to Downtown Victoria
- Commercial / Industrial Area

- Uplands (1.7 ha)
- Harbour Floor (2.0 ha)



# SITE HISTORY

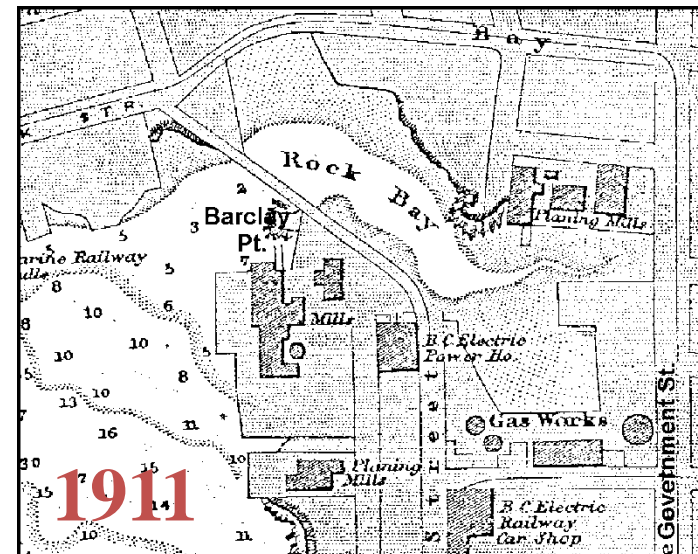
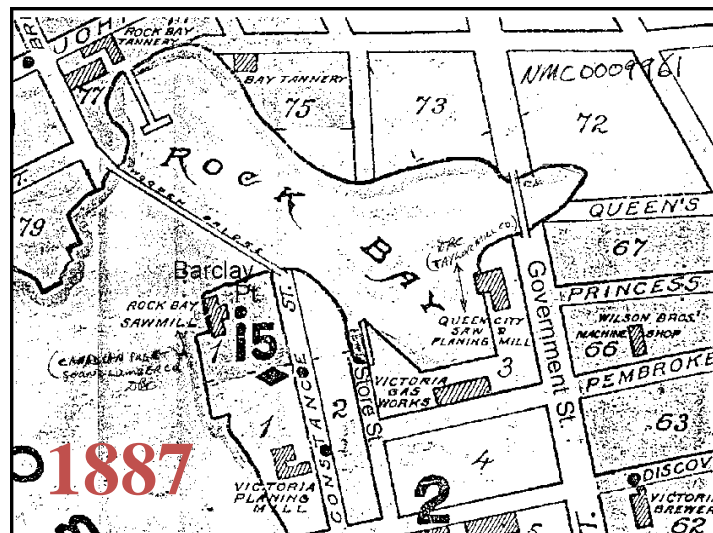
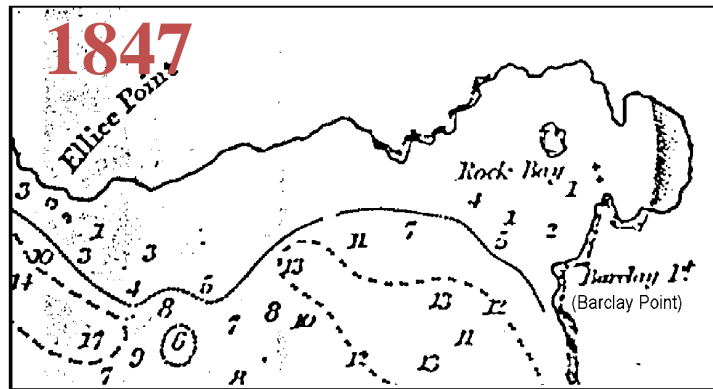
- 1862 – 1953: coal gasification plant in operation
  - Provided gas for street lighting and heating
- Afterwards, light industrial and commercial operations; last used as a school bus parking lot.





# INFILLING OF ROCK BAY

- One Rock Bay”
- 1924 Six Harbours Agreement
  - Established boundary of federal/provincial property in Victoria Harbour





# OTHER SITE HISTORY

---

## North area

Late 1800s – tannery

Early 1960s - sawmill closed

Early 1900s - sawmills

1973 - concrete plant opened

## West area

Early 1900s to 1948 - sawmill at Barclay Pt.

1949 - propane tanks

1992 - propane tanks removed



Rock Bay Bridge, pre-1900. Demolished. Collection Barrie McClung

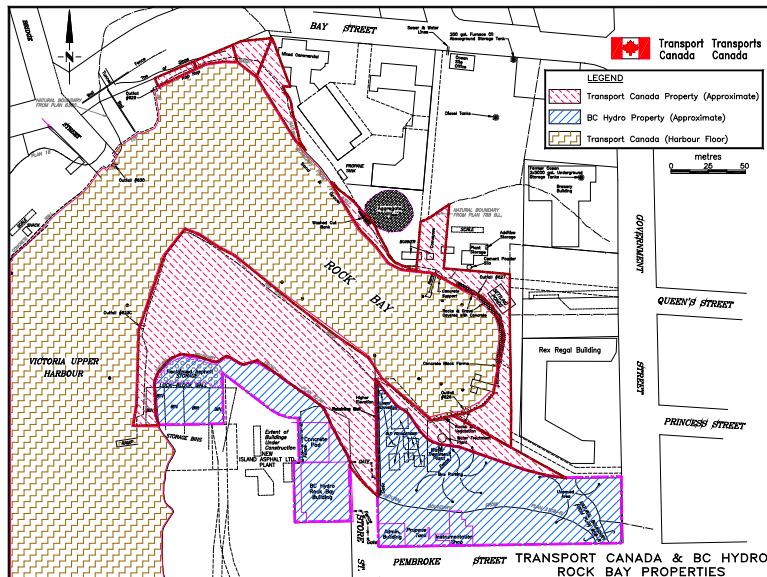


# SITE CONTAMINATION

## Soil and Sediments:

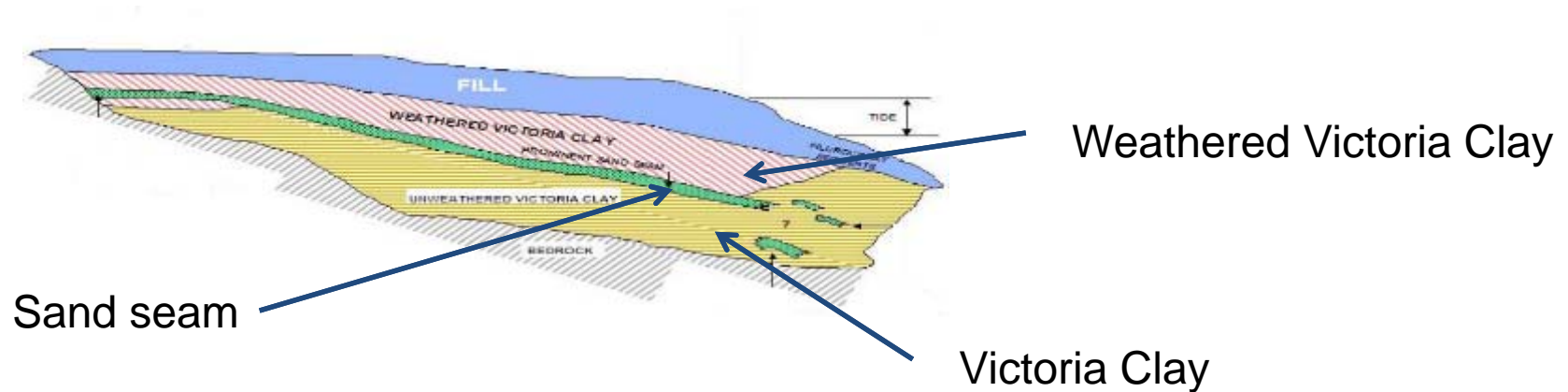
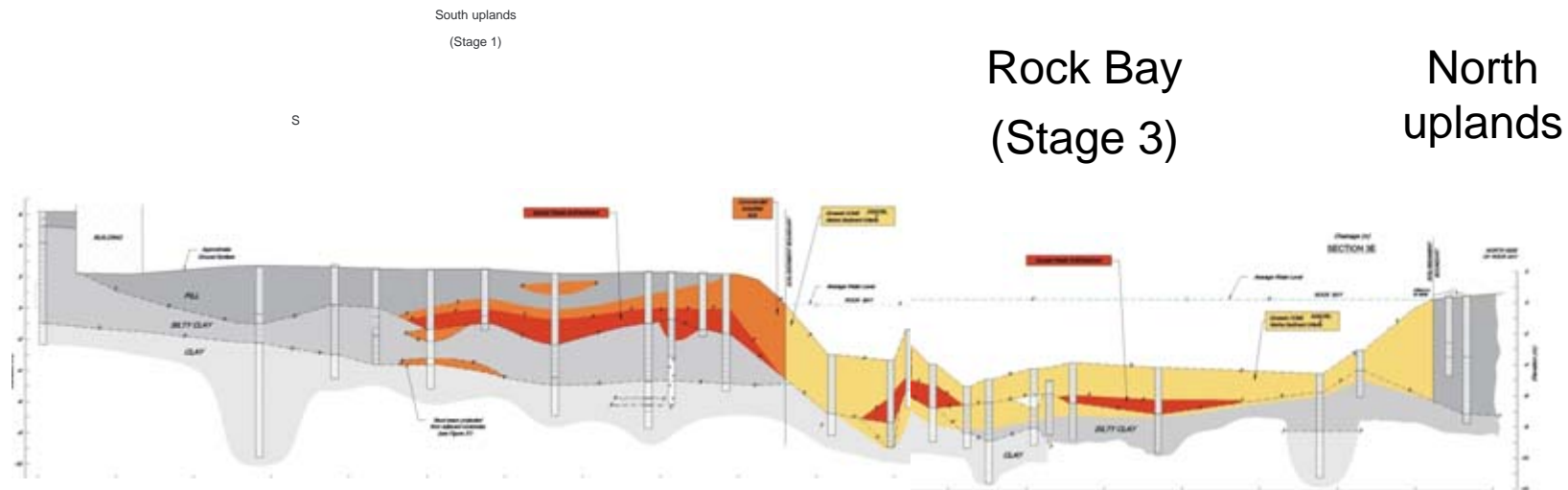
PAHs > CSR CL and Hazardous Waste (HW)

Metals and hydrocarbons > CSR CL.





# SITE CONTAMINATION





# REGULATORY INVOLVEMENT

---



1996 – Transport Canada and BC Hydro notified of a potential order to remediate contamination identified on site.

2003 *Revised Recommended Remedial Strategy* accepted by BC MOE, DFO and Environment Canada

Uplands: remove soil > CL

Marine: remove sediment > hazardous waste



# ROLES & RESPONSIBILITIES



- Transport Canada
  - Custodial department
- PWGSC
  - Project management and contracting authority
- Quantum Murray LP
  - Design Build / Prime contractor
- Anchor QEA
  - Construction monitoring
- Hemmera
  - Environmental monitoring
  - Confirmation sampling
  - Neighborhood Air Quality Monitoring Program
- Golder Associates
  - Quality assurance
  - Construction risk assessment
  - Budget estimation and schedule assessment



Transport  
Canada

Transports  
Canada



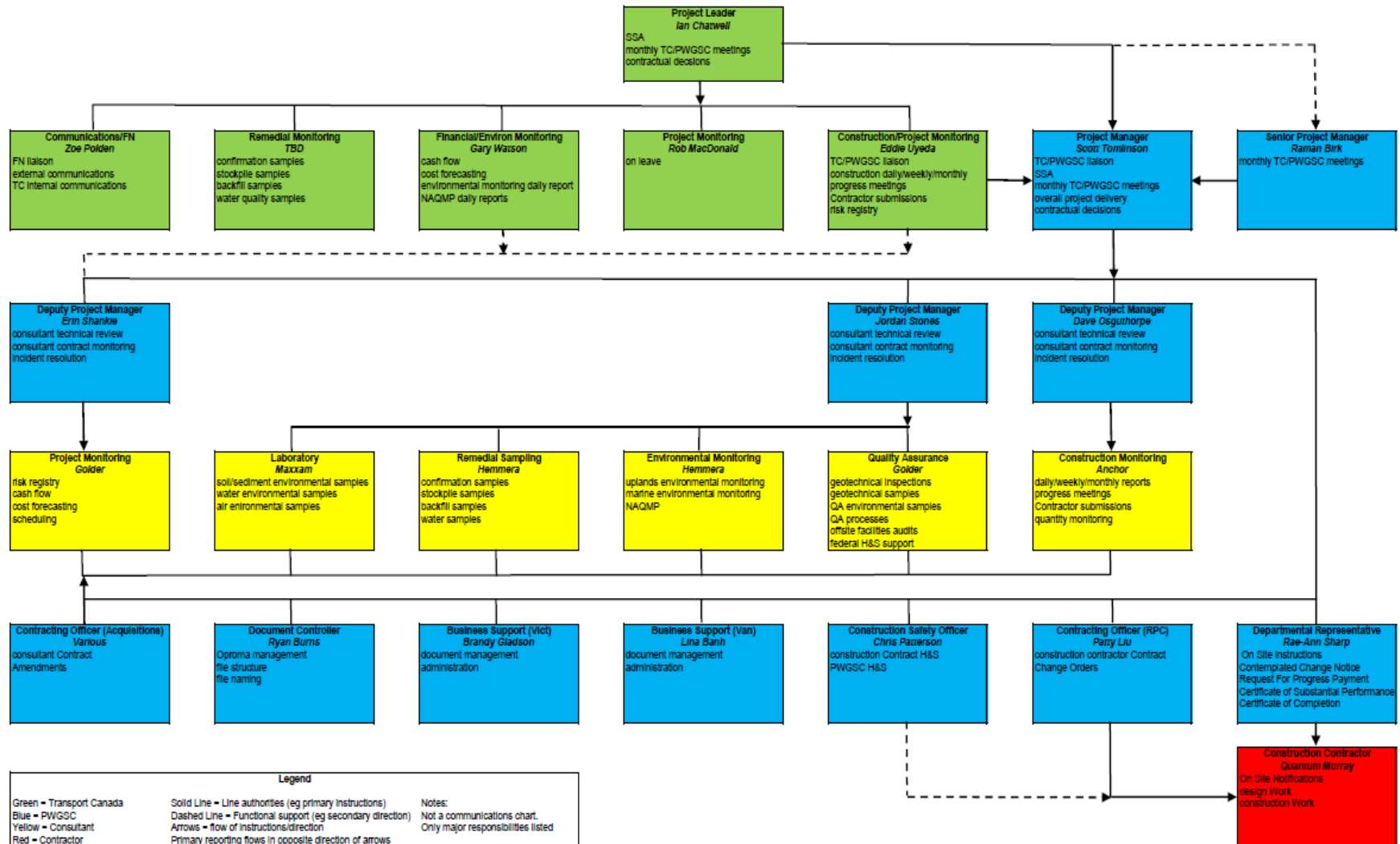
Public Works and  
Government Services  
Canada

Travaux publics et  
Services gouvernementaux  
Canada



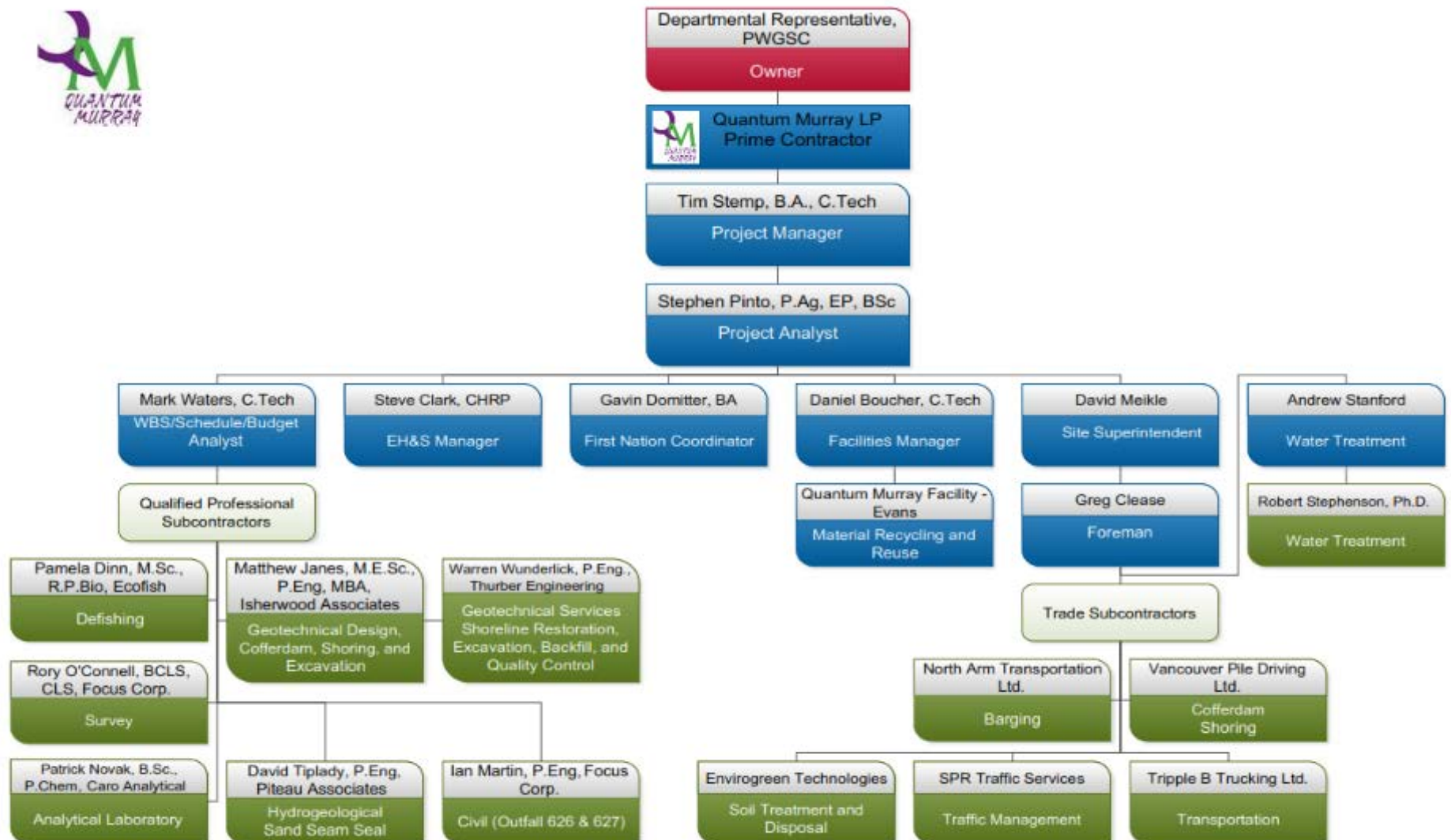


# ORGANIZATION CHART





# QMLP TEAM





# STAGE 3 REQUIREMENTS

---



Transport Canada required that:

- All excavation to be conducted in the dry; eliminate risk of mobilization and residual contamination

- Excavation of contaminated soils up to upland property lines .

- Excavation of the sand seam within the clay along the south property line and installation of a sand seam seal plug ( $1 \times 10^{-8} \text{m/sec}$ )

- Treatment and/or destruction of waste and hazardous waste material

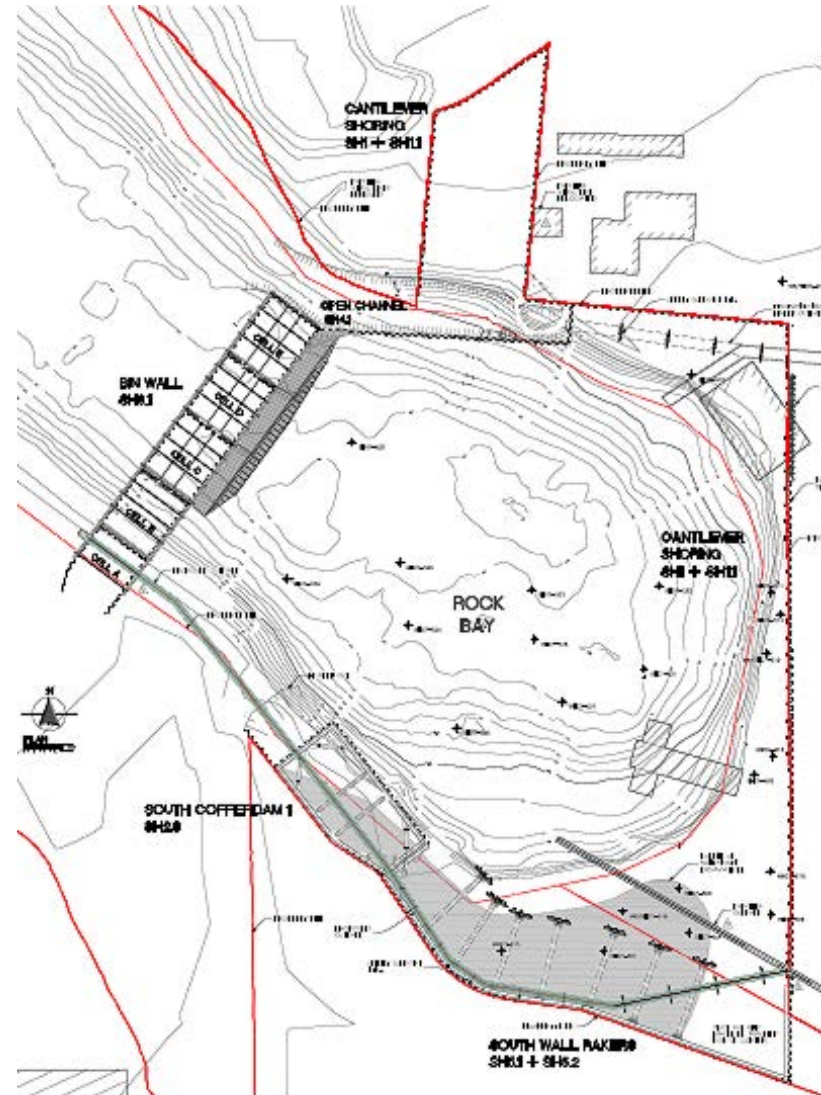
- No intrusion on neighboring properties

- Backfilling and shoreline restoration



# CONSTRUCTION PLAN

- Site preparation
- Cofferdam to seal off the bay
- Bypasses for the 626 and 627 storm sewers
- Shoring along upland property lines
- Draining of the bay
- Excavation and transport of an estimated 90,000 tonnes of material
- Treatment and disposal of contaminated soils
- Backfilling and shoreline restoration
- Construction Submittals





# PROJECT SCHEDULE

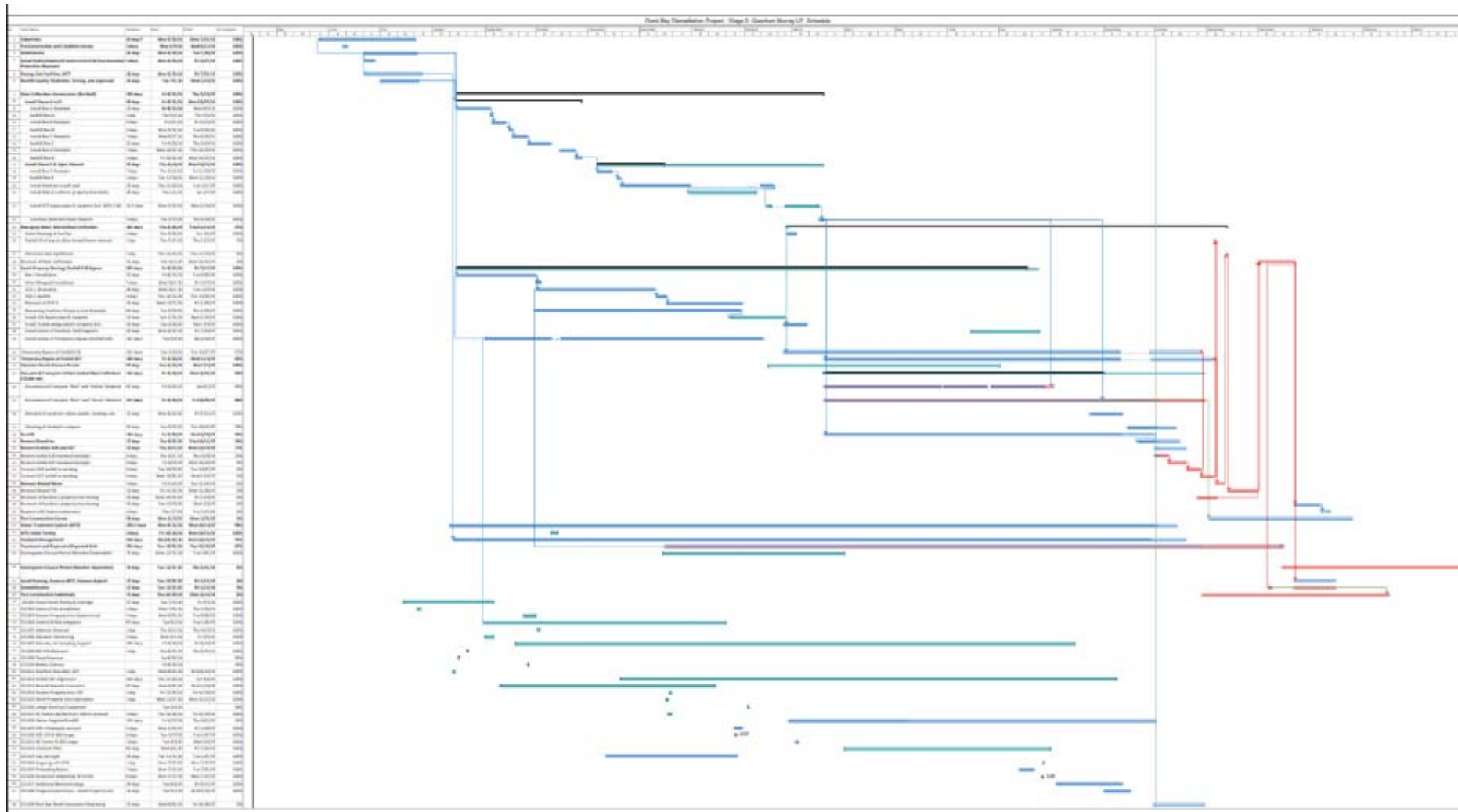
---



- **In water works end – February 15, 2015**
- **In water works start – July 1, 2015 (meaning we can pull sheets)**
- **Site works complete by November 30, 2015**
- **All treatment by January 30, 2016**
- **Closeout Submissions Due – February 15, 2016**



# PROJECT SCHEDULE





# SITE PREP

- Jun 2014 – mobilization
- Jun to Jul 2014
  - Clearing and Grubbing
  - Paving of stockpile storage area
  - Site trailers
  - Services and Facilities
  - Security





# SITE PREP

- Truck Washes
- Scales
- Grading and catch basins
- Water Services





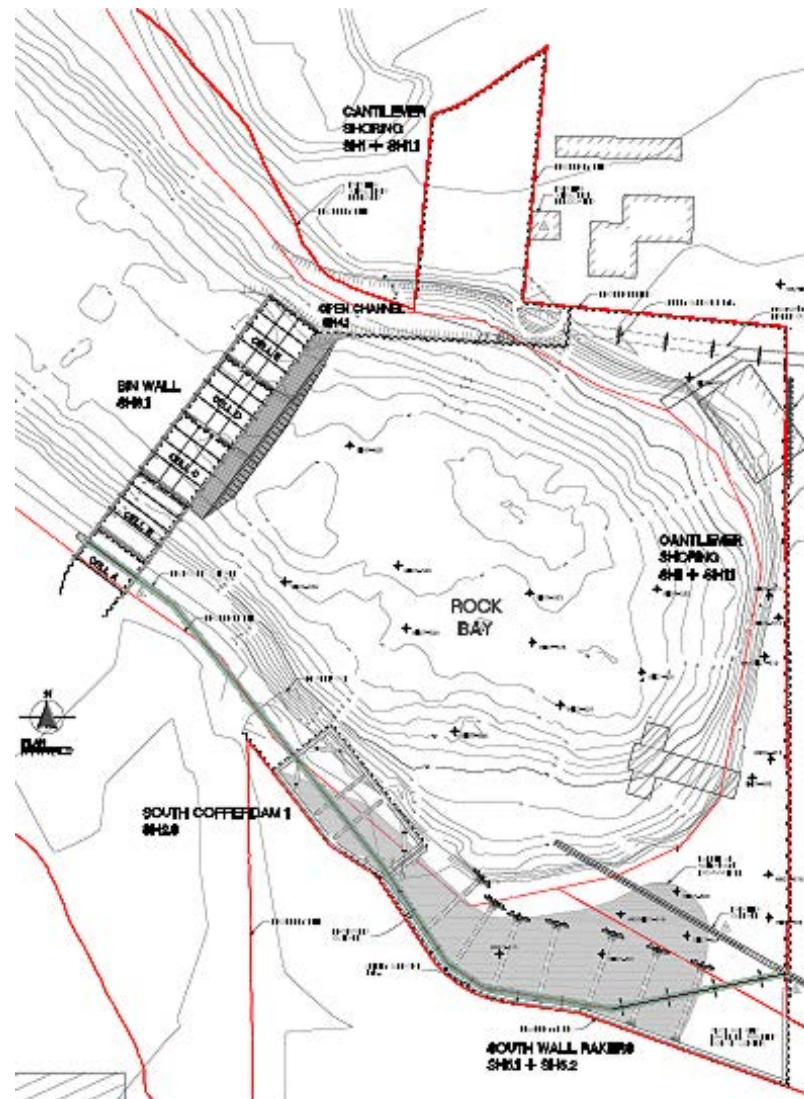
# SITE PREP

- Jul 2014 – Crane mobilized to site.





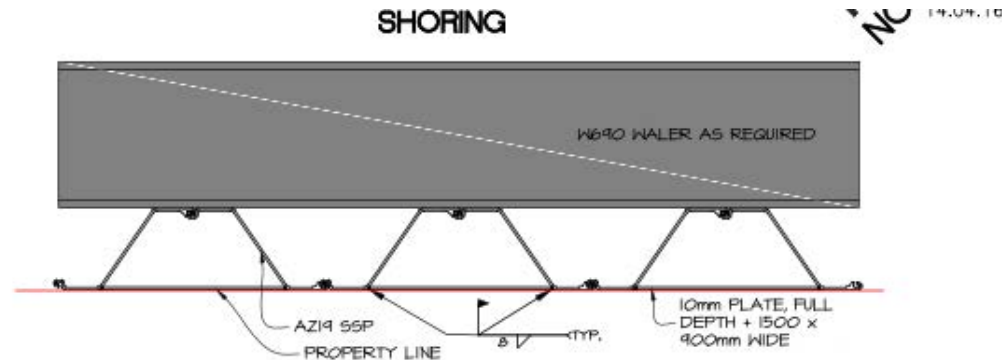
# SHORING & COFFERDAM BOX





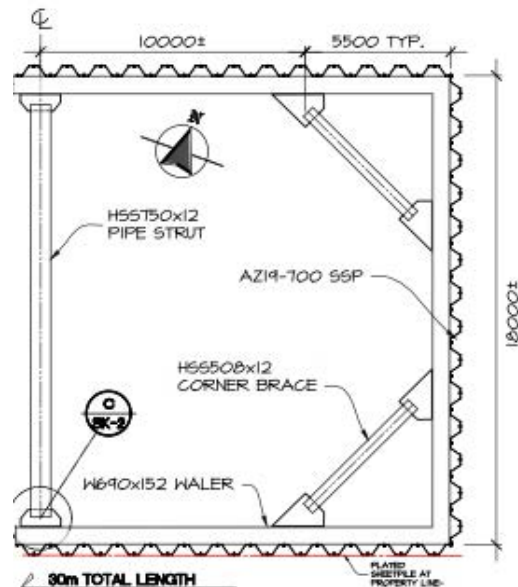
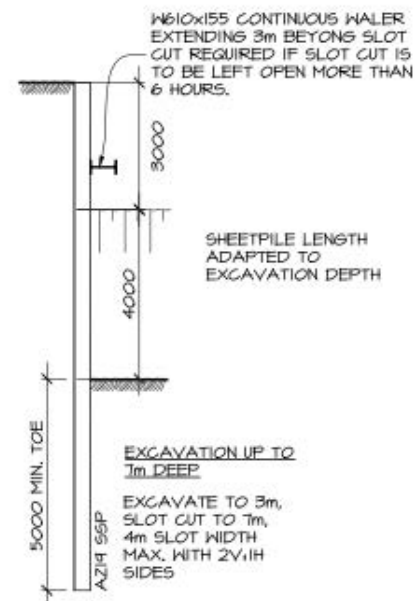
# SHORING & COFFERDAM BOX

## SHORING



**TYPICAL SHEETPILE DETAIL AT  
PROPERTY LINE  
SCALE 1:25**

## TYPICAL SHEETPILE SECTION 1:25



**TYPICAL COFFERDAM BOX HALF PLAN  
1:200**



# SHORING ON PROPERTY LINE

- Aug to Dec 2014 – shoring along south property line
- Sept 2014 to Feb 2015 – 626 storm sewer bypass construction
- Dec 2014 - excavation and backfilling in SCD1



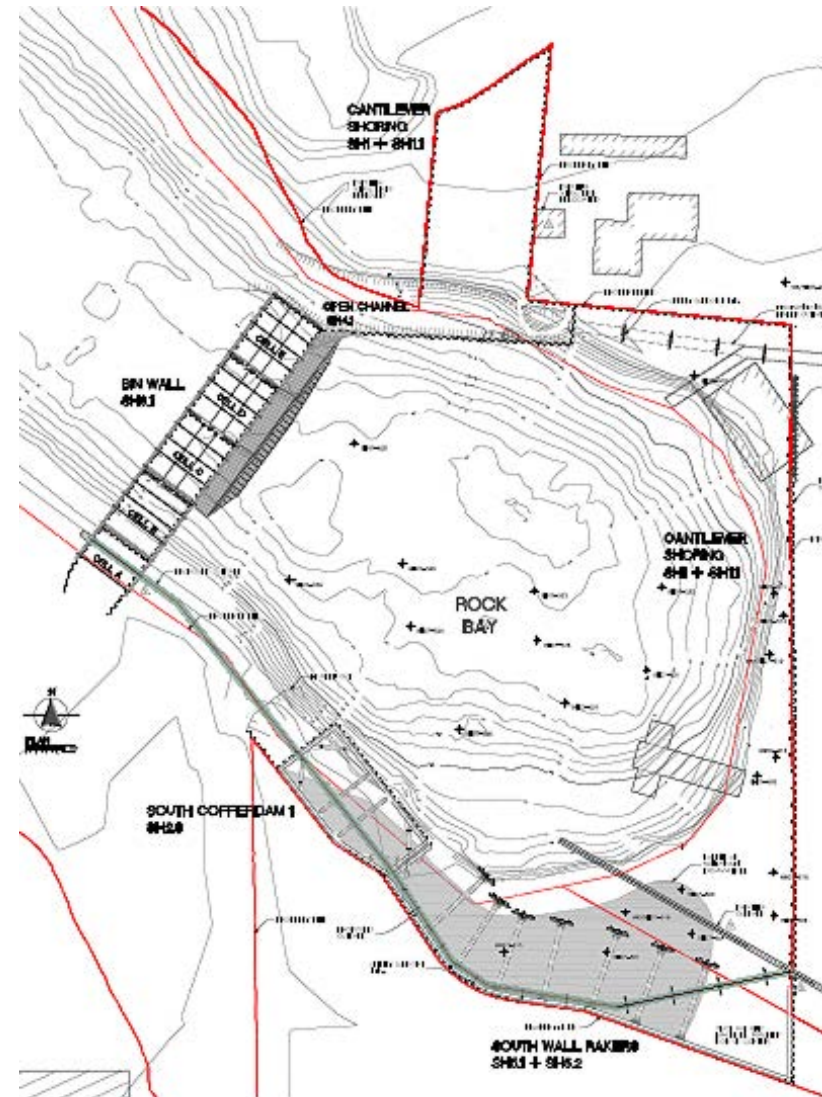


# SHORING ON PROPERTY LINE





# COFFERDAM CONSTRUCTION





# COFFERDAM CONSTRUCTION





# COFFERDAM CONSTRUCTION

---





# COFFERDAM CONSTRUCTION

---

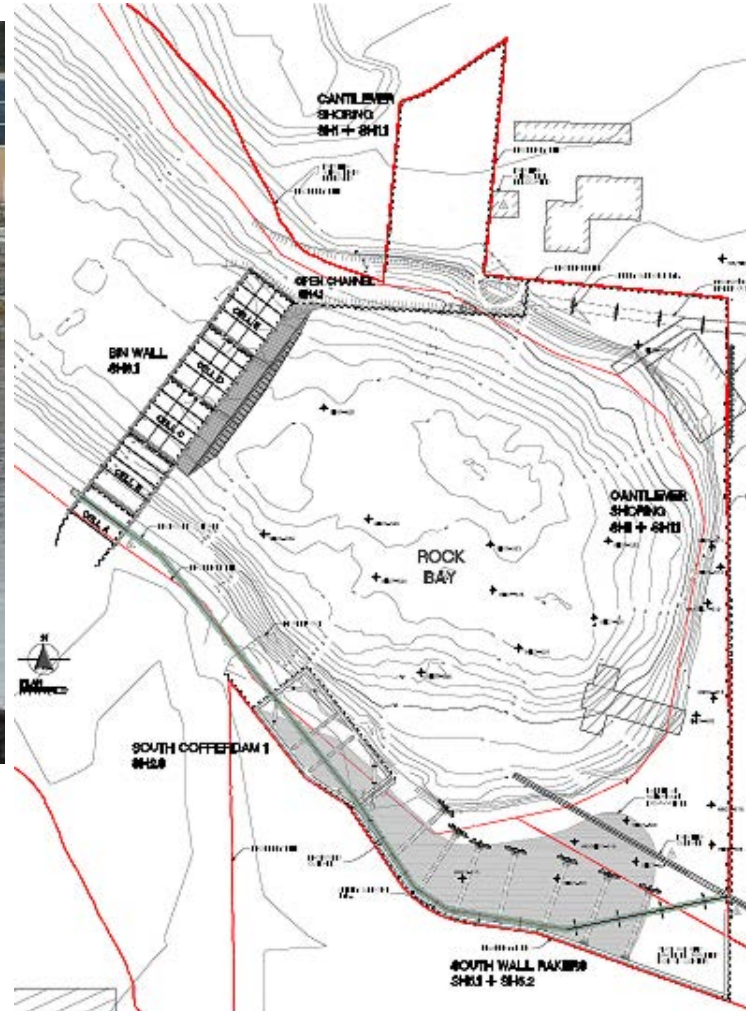


- Aug to Nov 2014 – main cofferdam construction
- Nov 2014 to Feb 2015 – northern cut-off wall





# OUTFALL BYPASS





# OUTFALL BYPASS



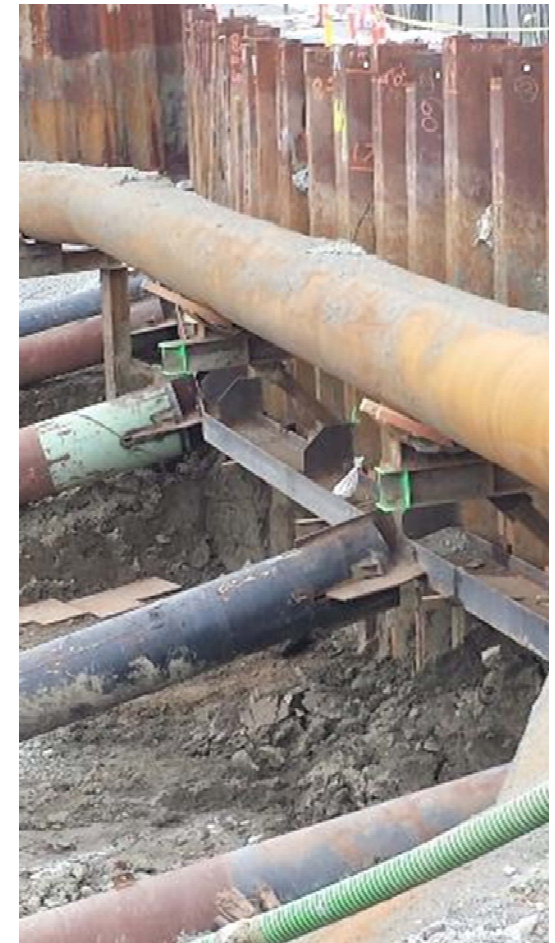


# OUTFALL BYPASS





# OUTFALL BYPASS/SHORING





# OUTFALL BYPASS





# CLOSING OFF THE BAY

---

Feb 2015 – closing off of the bay  
and draining





# FISH REMOVAL

- Approximately 3,600 fish removed
- Stickleback, surf smelt, sculpin and halibut





# DEWATERING





# COAL TAR





# BULK EXCAVATION

March 2015 – Bulk Excavation Begins



Coal Tar Seeping out of Geoduck Hole

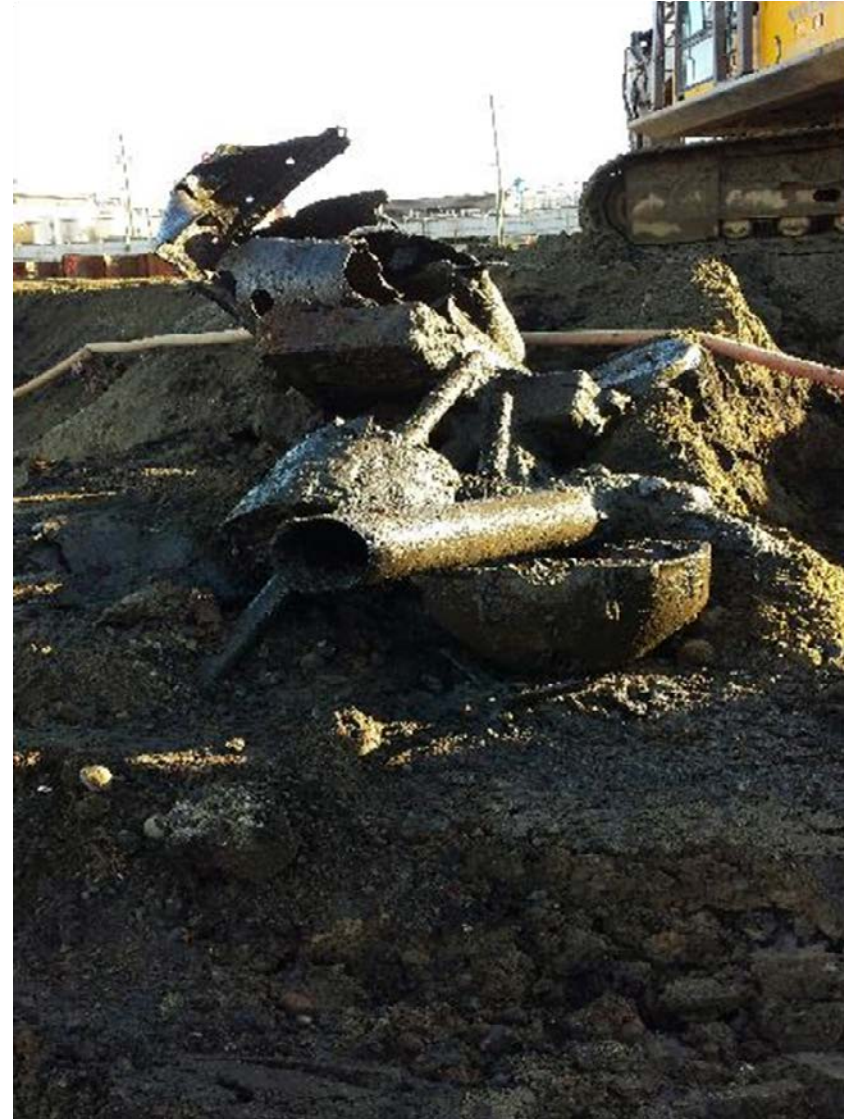


# BULK EXCAVATION





# DEBRIS





# BULK EXCAVATION





# EXCAVATION & BACKFILL





# BACKFILL



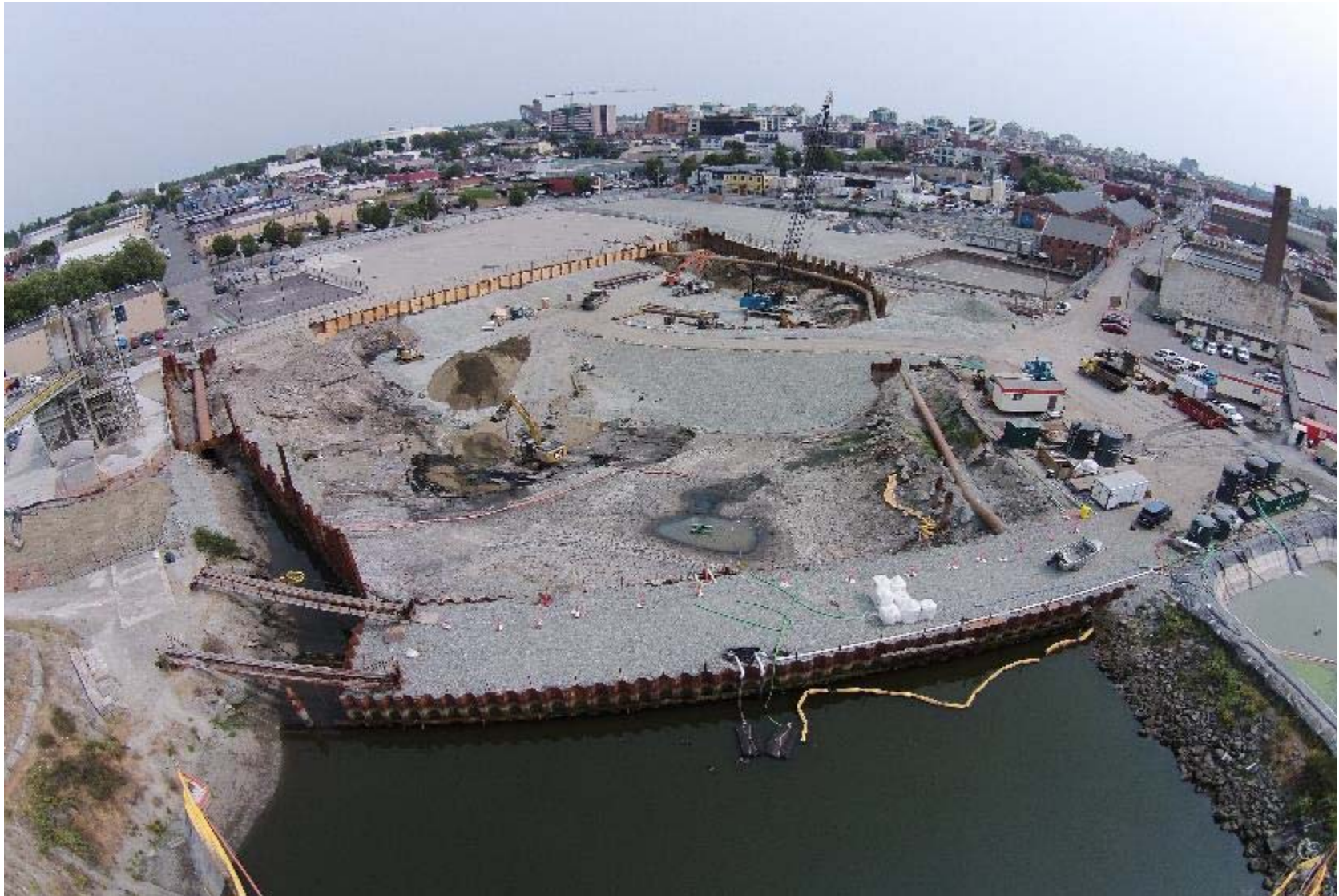


# BACKFILL





# BACKFILL





# BACKFILL & STOCKPILE

---





# BACKFILL & RESTORATION

---





# TRANSPORTATION



23 Barges Exported

6,700 Trucks





# TREATMENT & DISPOSAL





# WORKS TO BE COMPLETED

---



2015

- Shoreline restoration; restore 626 and 627 storm sewer outfalls; re-flood the bay.
- Removal of main cofferdam and perimeter shoring
- Treatment and disposal of contaminated soil and sediment
- Demobilization

2016

Post Construction Sumbittals



# DOCUMENTATION

---

Pre-construction Submittals – 17

On-Site Notification – 365

On Site Instructions – 260

Post Construction Submittals -





# SPECIAL THANKS



PWGSC

Transport Canada

Isherwood Engineering

WSP Engineering

Envirogreen Technologies

Volk Transport

Thurber Engineering

To All the Rock Bay Staff







quantummurray.com  
1-800-251-7773



# QUESTIONS?

Stephen Pinto,  
[SPINTO@QMLP.CA](mailto:SPINTO@QMLP.CA)  
250-889-3944

