

# Goodmorning

Welcome to our presentation.....

New Equipment to Support Emergency Response  
and Large Volume Dewatering & Treatment.





October-21-14





October-21-14





October-21-14





October-21-14





October-21-14



October-21-14

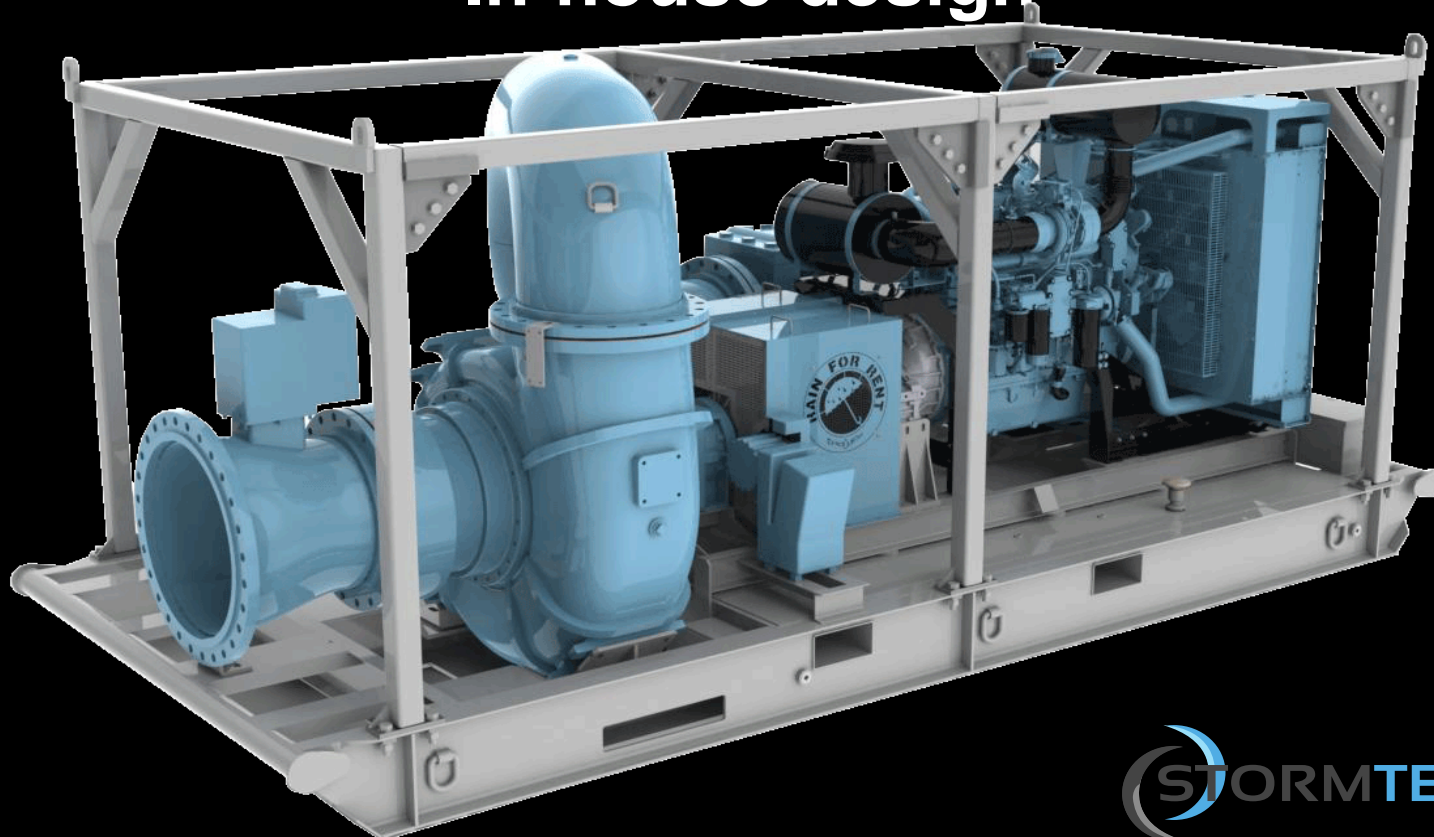


# Product Innovation

## DV-600c 30" x 24"

**28,000 GPM @ 40' TDH**

**In-house design**





# Portable Centrifugal Pump



# History of Tackling Complex Jobs



***This system handled 145 MGD***





# North America's Largest Bypass

*354 MGD - Sydney Tar Ponds, Nova Scotia*



# Diverse Fleet of Pumps

*Diesel and Electric Self-Priming Pumps  
with Suction Lifts to 28ft.  
Trailer and Skid Mounted with Auto-Start Control Panels.*



Trash Pumps



High Head Pumps



Sound Attenuated

## Electric and Hydraulic Submersibles





# Tanks

- Stainless and Carbon Steel

- Weir Tanks
- Mixing Tanks
- Coated
- Double Wall
- Heating Coils
- Vapor Tight



- Poly Tanks

- Cross Linked Polyethylene
- 650-6900 Gallon
- Single and Double Wall



# Specialty Boxes

- Rolloff
- Vacuum Style
- Filter Box
- Vacuum Filter
- Tube Settler





# Filtration Solutions



## Media Filters

Automated backwash cycle, self cleaning.  
Deep bed filtration down to 10 micron.  
Custom Media Available.

## Oil Water Separators

No moving parts or power required  
Coalescing packs to assist separation process  
Flows up to 200gpm



## Bag Filters

Filtration from 1 to 100 Micron.  
Oil absorbing bags available.



## Cartridge Filters

Sizes down to ½ micron.  
Wide variety of applications.



# Spillguards

One-Piece Construction | Heavy-Duty Coated Fabric | Improves Environmental Safety



Heavy-Duty ground tarp and belting gives drive on capabilities and improved operator safety





# *FreezeSentry™ Hydronic Heaters*

## **E-5000**

- Self contained w/ generator
- 714,000 BTU/HR
- 5,000' of 5/8" hose
- 35 hour run time
- Heats 12 tanks

## **E-3000**

- 385,000 BTU/HR
- 83% heater efficiency
- 3,000' of 5/8" hose
- 72 hour run time
- Heats 6 tanks



# FreezeSentry™ Hydronic Heaters

Wellhead



Status/Fault Indication  
Strobe Lights



- Power requirements: 5.5 KW at 230 VAC single phase
- Working Fluid: Propylene Glycol
- Weight: 400 lbs (w/o hose)
- Max working temperature & pressure: 180°F & 100 psig
- Adjustable thermostatic controls





# *FreezeSentry™ Heat Blankets*



# Additional Equipment

## Wide Body Light Towers

- With cold weather package



## Mobile Generators



## Explosion Proof Pumps

- Class 1 Div 2





# Tunnel Dewatering Filtration



# Wellpoint Dewatering





# Filtration Specialists





# Pipeline Pump & Storage





# Creek/Stream Bypass



# Pipeline Pigging





# Hydraulic Fracturing



# Frac Water Reuse





# Frac Water Transfer



# Frac Water Transfer





# PCB Remediation



# Creosote Remediation





# Cooling Tower Bypass/Filter



# Temp Sand Media Filtration





# Oil/Water Separation



# Cooling Tower Bypass





# Aluminum Pipe



Each joint is hydro tested to 200 psi



# Design Services

