

Challenges and Opportunities in FCSCAP Phase II

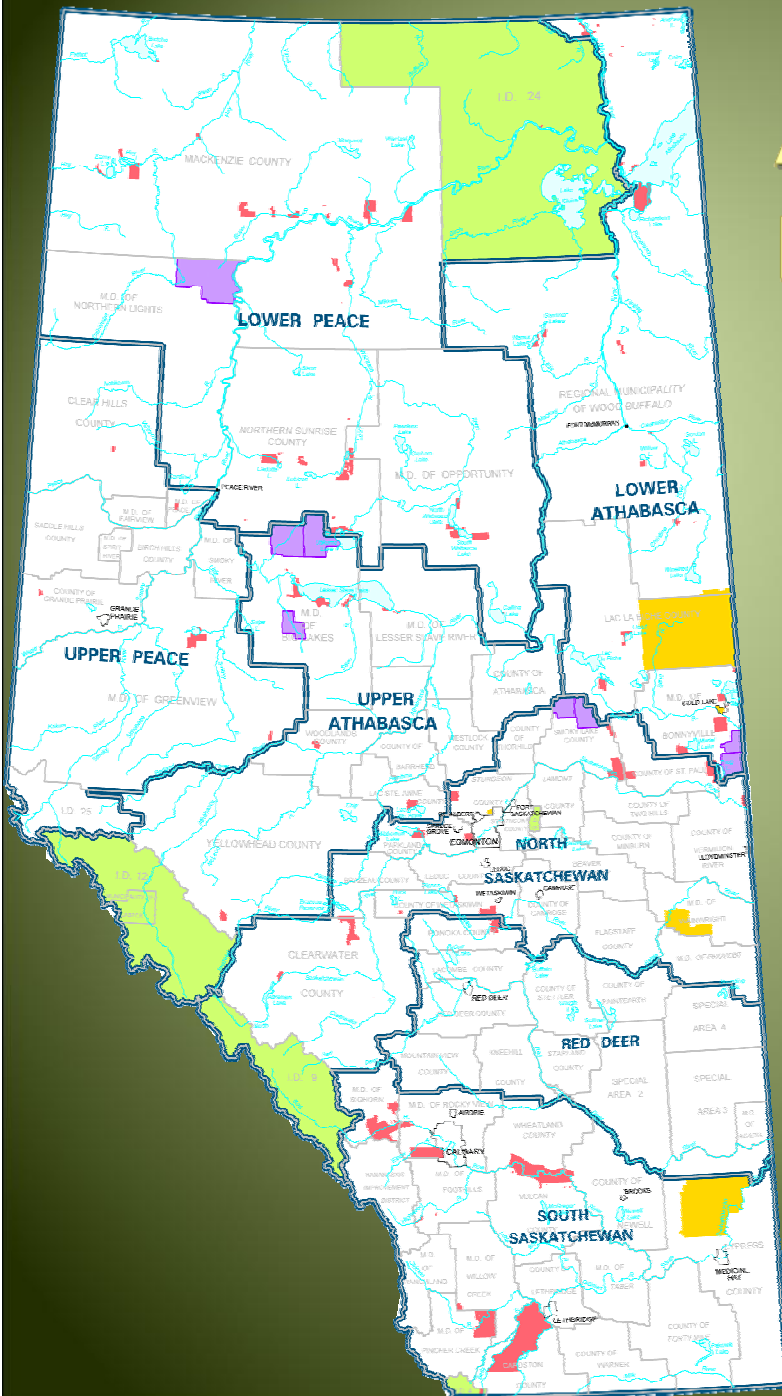
- ♦ Policy recommendations provide the direction for the funding
- ♦ Funding provides the incentives to use innovative approaches
- ♦ Procurement provides the tools to implement policies and distribute funding
- ♦ Communication initiatives provide the information to encourage and implement these approaches.
- ♦ Remediation Process – when and how potential remedial options are identified, evaluated, and the preferred option selected

Les défis et les opportunités de l'étape II du PASCF

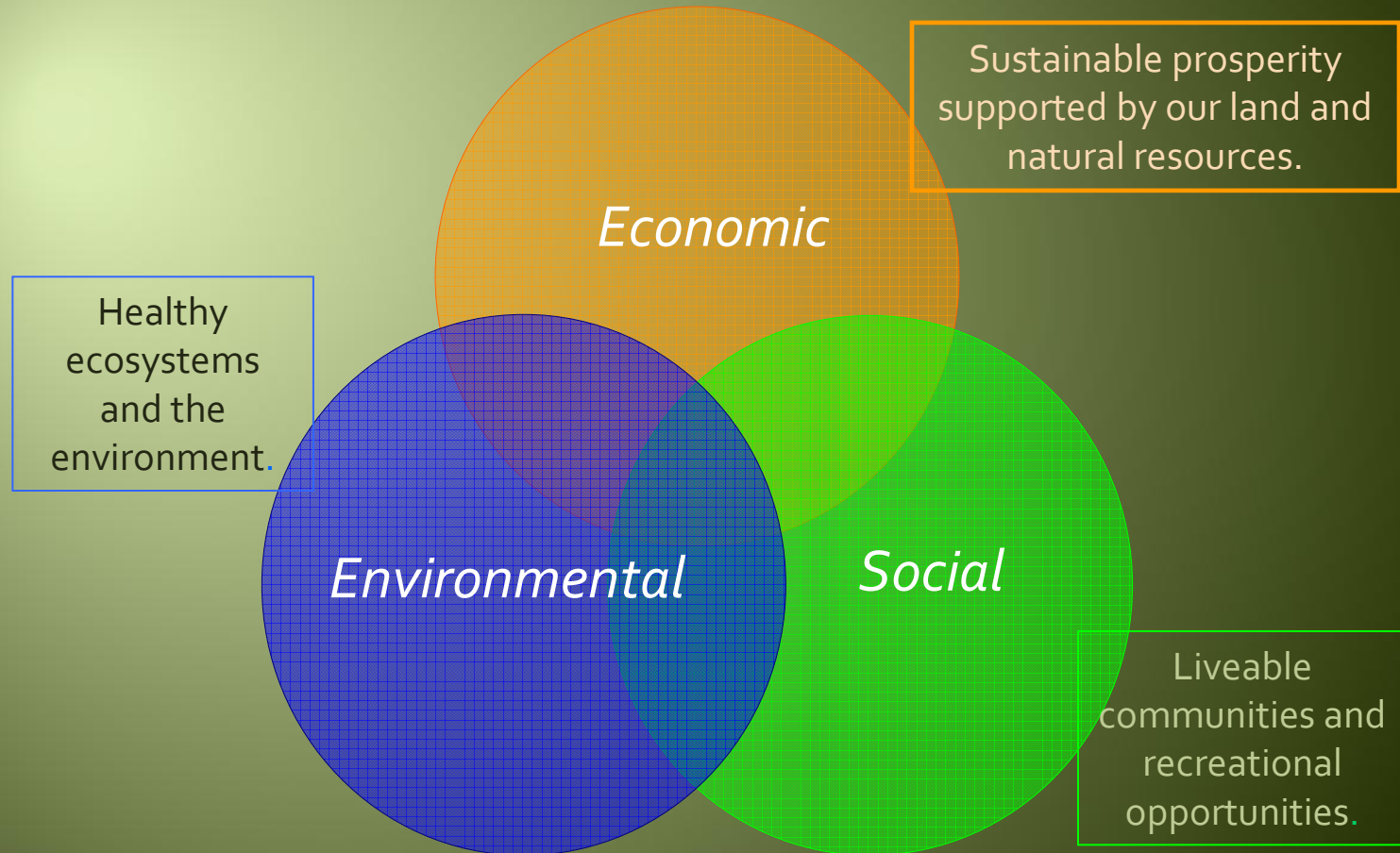
- ♦ Les recommandations des politiques guident la distribution des fonds
- ♦ Les fonds encouragent l'utilisation d'approches novatrices
- ♦ La passation de marché fournit les outils afin de mettre en application les politiques et la distribuer des fonds
- ♦ Les initiatives en communication apportent l'information afin d'encourager et de mettre en application ces approches
- ♦ Processus d'assainissement – quand et comment les options potentielles sont identifiées, les évaluer, et choisir l'option privilégiée

A Shift Towards Cumulative Effects Management (CEM)

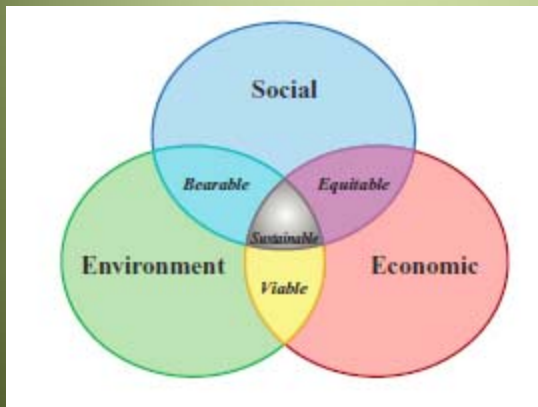
- ◆ Cumulative Effects Management (CEM) will be used to manage implications of development to air, land, water and biodiversity
- ◆ Environmental assessment will need to shift to a regional focus from a project-specific focus to support CEM.
- ◆ The current implementation vehicle for CEM is the Land-Use Framework system
- ◆ Regional plans will guide future development decisions



Land-use Framework



Challenges to Integrating Sustainability into Contaminated Sites Management



Community Brownfield Redevelopment

- ◆ Time
- ◆ Certainty of Outcome (perceived costs)
- ◆ Liability (closure and transfer)
- ◆ Management to desirable end land use

City Contaminated Sites Management

- ◆ Capital Budgets vs. Operational
- ◆ Understanding of risk management
- ◆ Inconsistent valuation of externalities
- ◆ Reactive vs. proactive

Sustainable remediation components that can be successfully integrated into site prioritization:

- Environmental Indicators

- Environmental Quality Guidelines (Water, Soil, Sediment)
- Energy consumption and GHG emissions
- Quantity of Waste Generated
- Effects on Flora and Fauna

- Economic Indicators

- Direct costs
- Liability reduction
- Corporate image

- Societal Indicators

- Health and Safety (workers and community)
- Opportunities for local business
- Cultural Heritage
- Public disruption



Challenges and Barriers

- ◆ Panel Discussion
 - ◆ What are the challenges or barriers that you have faced, and what do you see as a barrier advancing sustainable remediation in the future as it relates to your organization.

Workshop Wrap-Up

- ◆ Summarize what are the key take-away points of today.