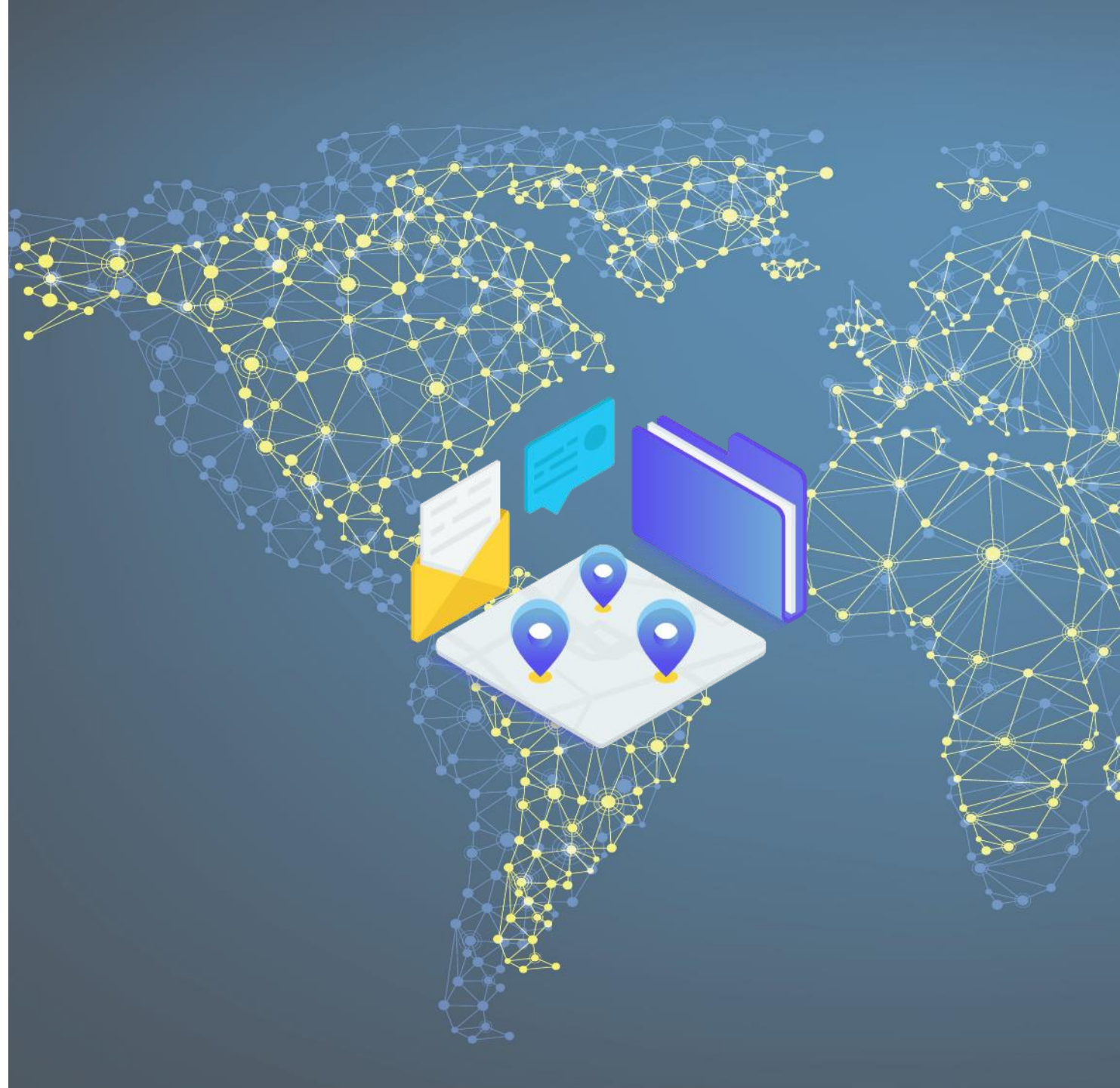


# MATIDOR

## Geospatial Collaboration Platform

---

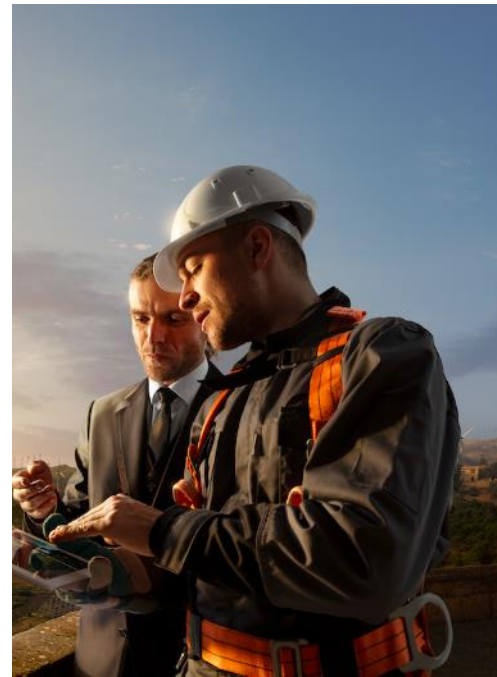
How to manage remote work  
and reduce risks



# Our Story

---

Matidor.com is all about collaboration. It is a new kind of **cloud-based platform** that combines data management and visualization on an intuitive, sharable geospatial dashboard.



Our pioneer customers are using Matidor.com to better manage their projects and reduce environmental impact.

**Upstream producers, environmental consultants** and others are coming together in new ways to collaborate and share, **increase efficiency, reduce liability and improve cleanup.**

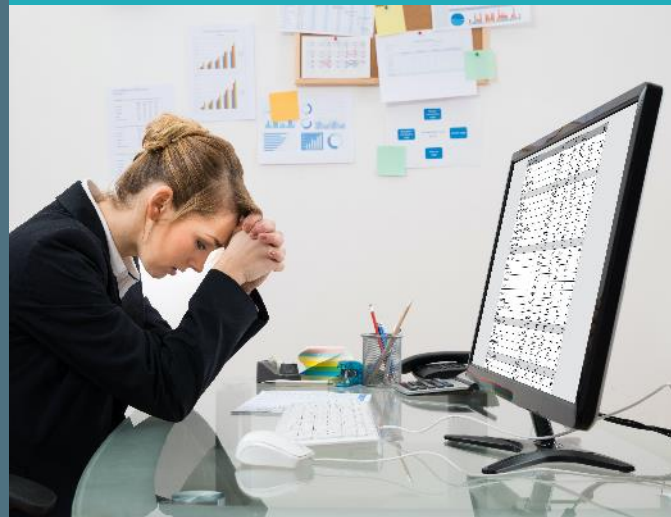


# Impact of COVID-19 and risks

This “New Norm” amplified the unspoken pains:

Managing accurate and timely records with remote teams is a challenge.

Inefficiencies and risks arise when information are locked in spreadsheets, overly complex software or in-house silos.



A word cloud featuring various terms related to geology, surveying, and data collection. The words are arranged in a dense, overlapping manner, with some terms appearing in larger, bolder fonts than others. The colors used are white and a light blue/teal. The background is a solid dark gray.

UAV PHOTOS  
HISTORICAL AIR PHOTOS  
EXCELS  
CAD DRAWINGS  
TITLE SEARCHES  
SITE PHOTOS  
LAB DATA  
WATER WELL  
SURVEYS  
THIRD PARTY  
SPREADSHEET  
BOREHOLE LOGS  
ANALYTICAL TABLES  
SATELLITE IMAGES  
EQUIPMENT REQUISITIONS  
GPS DATA  
FIELD SKETCHES  
GROUNDWATER ELEVATION  
DATA CORRESPONDENCE  
REPORTS  
EXCELS  
PDFS  
EXCELS  
SEARCHES  
GEOPHYSICAL DATA  
CONTRACTS  
EXCELS  
SURFER MAPS  
SAFETY FORMS

# One-stop-shop experience

Matidor.com provides an intuitive, integrated dashboard for everyone to access and share key project information through a cloud-based platform.

- No more spreadsheets
- Real-time updates
- Budget and cost tracking
- Secure and easy sharing
- Connect other databases

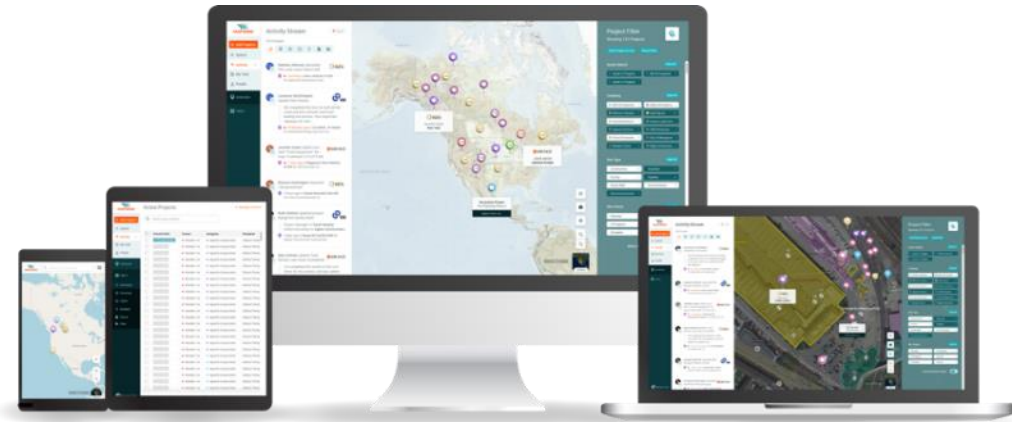
Your Data



Partner Data



Device Data



Better Virtual Collaboration



Less Cost Overruns



Better Ops Efficiency



## Our Partners Series:

# ESdat

- Create sample plans to assist with field data collection
- Import field, historical and laboratory data
- Perform chemical quality assurance on lab and field data
- Create a variety of reports based on your reporting needs

# ESdat

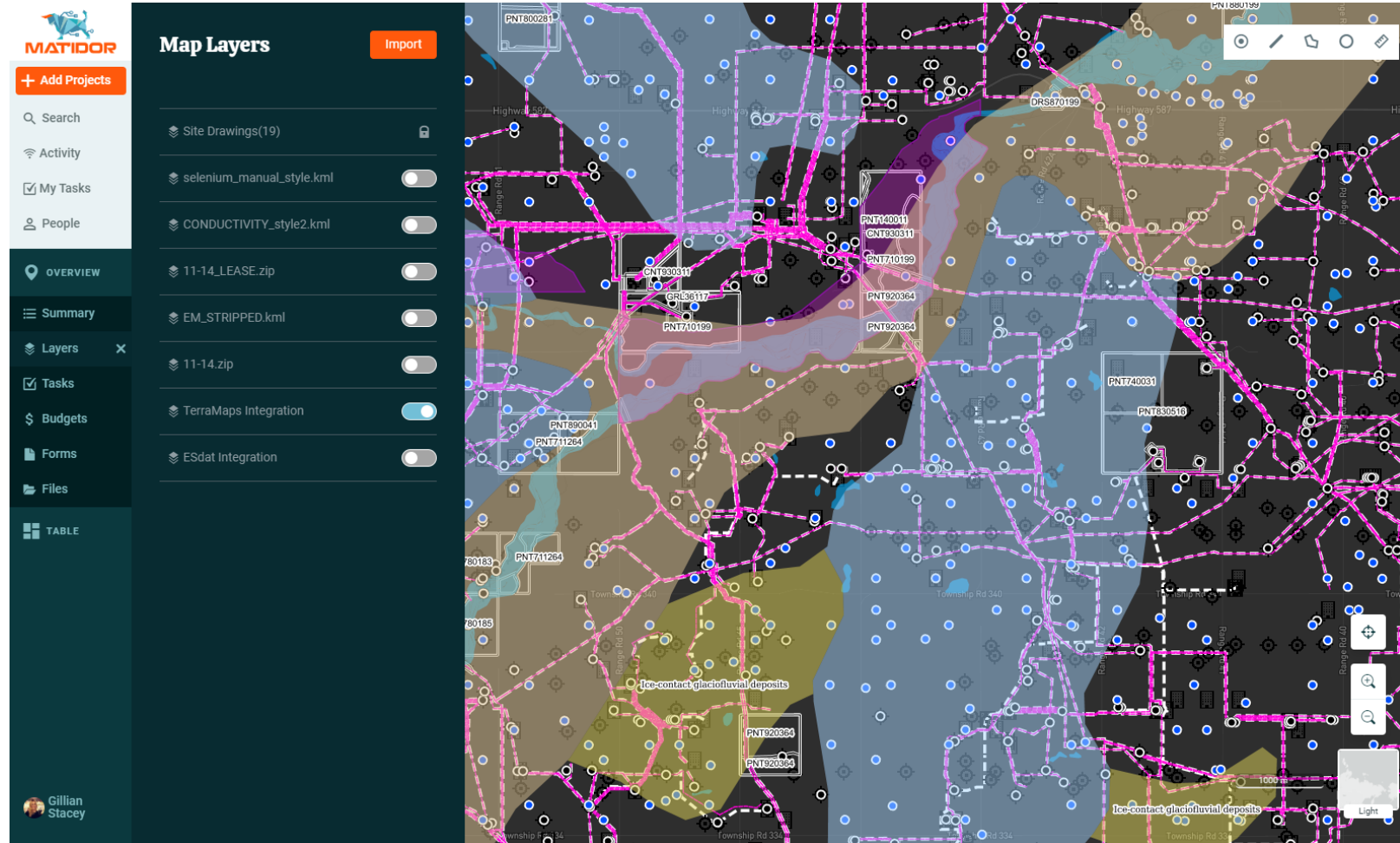


## Our Partners Series:

# TerraShift

- TerraMaps provides comprehensive GIS data via Matidor.com to enable smarter decisions.
- Data includes dispositions, geological deposits, oil wells, pipelines, water wells, hydrography, environmental features and more!

## TERRASHIFT Engineering Ltd.





## Our Partner Series:

# Delta Remediation

- The **ScreenLogix (TPH) Field Kits** is designed for immediate and economical assessment of soil samples
- Results will automatically be recorded into [Matidor.com](https://matidor.com) for quick reference with other aspects of the project



Contaminant Reactivity Comparison Chart 2 (TPH)

Gasoline							
	Clean Soil	Approx 500 ppm	Approx 1,000 ppm	Approx 2,000 ppm	Approx 3,000 ppm	Approx 5,000 ppm	Approx 10,000 ppm
Liquid							
Solids							
Diesel							
	Clean Soil	Approx 500 ppm	Approx 1,000 ppm	Approx 2,000 ppm	Approx 3,000 ppm	Approx 5,000 ppm	Approx 10,000 ppm
Liquid							
Solids							
Light Crude Oil							
	Clean Soil	Approx 500 ppm	Approx 1,000 ppm	Approx 2,000 ppm	Approx 3,000 ppm	Approx 5,000 ppm	Approx 10,000 ppm
Liquid							
Solids							
Heavy Crude Oil							
	Clean Soil	Approx 500 ppm	Approx 1,000 ppm	Approx 2,000 ppm	Approx 3,000 ppm	Approx 5,000 ppm	Approx 10,000 ppm
Liquid							
Solids							
Lubricating/Motor Oil							
	Clean Soil	Approx 500 ppm	Approx 1,000 ppm	Approx 2,000 ppm	Approx 3,000 ppm	Approx 5,000 ppm	Approx 10,000 ppm
Liquid							
Solids							



# Q&A



# Thank You!



info@matidor.com



778-223-8599



matidormap



<https://matidor.com/esaa-2020-promo>